

CNC TORNA SERİSİ

CNC LATHE SERIES

NUR B-1
YUMUŞAK AYAKLAR
SOFT JAWS



sayfa - page
1

NUR B-2
YUMUŞAK AYAKLAR
SOFT JAWS



sayfa - page
2

NUR TST
T-SOMUNLAR
T-NUTS



sayfa - page
3

PMK01
CNC DÖNER PUNTA
CNC REVOLVING TAIL
STOCK CENTER



sayfa - page
5

PMK02
CNC DÖNER PUNTA
CNC REVOLVING TAIL
STOCK CENTER



sayfa - page
5

PMK03
CNC DÖNER PUNTA
CNC REVOLVING TAIL
STOCK CENTER



sayfa - page
5

PMK04
CNC DÖNER PUNTA
CNC REVOLVING TAIL
STOCK CENTER



sayfa - page
6

PMK05-SET
CNC DÖNER PUNTA
CNC REVOLVING TAIL
STOCK CENTER



sayfa - page
6

CCA 100
ÇUBUK ÇEKME APARATI
BAR PULLER



sayfa - page
7

DDA 032
DAYAMA APARATI
BAR STOPPER



sayfa - page
15

DDA 042
DAYAMA APARATI
BAR STOPPER



sayfa - page
15

DDA 052
DAYAMA APARATI
BAR STOPPER



sayfa - page
15

TT
TAKIM TUTUCULAR
TOOL HOLDERS
(FOR CNC LATHES)



sayfa - page
4

PCA
PAFTA ÇEKME APARATI
SCREW DIE ATTACHMENT



sayfa - page
9

TCA 0401
TIRTIL APARATI
KNURLING TOOL



sayfa - page
8

CKA 0601
ÇOKLU KÖŞE BASMA APARATI
BROACHER FOR
POLYGONAL HOLES



sayfa - page
8

POS
PARÇA ÖLÇME STANDI
PARTS MEASUREMENT
STAND



sayfa - page
15

PTER
PENS TUTUCULAR
COLLETS HOLDER



sayfa - page
10

PTSER
PENS SOMUNU
CLAMPING NUTS



sayfa - page
11

KA-ER
KILAVUZ ÇEKME APARATI
TAPPING ATTACHMENT



sayfa - page
9

HPT-EX
PENS AYNASI
POWER CHUCK



sayfa - page
14

HPT-IN
PENS AYNASI
POWER CHUCK



sayfa - page
14

MKA
ÜNİVERSAL MORS KONİK AYNA
CONVENTIONAL
CHUCK CONICAL



sayfa - page
14

UDT-A
U-DRILL TUTUCULAR
U-DRILL SLEEVES



sayfa - page
12

UDT-B
U-DRILL TUTUCULAR
U-DRILL SLEEVES



sayfa - page
12

MKT
MORS KONİK TUTUCU
CONICAL BUSHES



sayfa - page
12

DKT
DELİK KATER TUTUCULARI
BORING BAR SLEEVES



sayfa - page
13

ZEMİN SERİSİ

BASE SERIES

BP01
M/C
BASE PLATE



BP02
M/C
BASE PLATE



BP03
M/C
BASE PLATE



BP04
M/C
BASE PLATE



BP05
M/C
BASE PLATE



BP06
M/C
BASE PLATE



BP07
SQUARE TOOLING
COLUMN



BP08
SQUARE TOOLING
COLUMN



BP09
SQUARE TOOLING
COLUMN



BP10
DOUBLE SIDED
TOOLING COLUMN



BP11
DOUBLE SIDED
TOOLING COLUMN



BP12
DOUBLE SIDED
TOOLING COLUMN



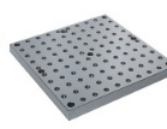
BP13
MODULAR TOOLING
COLUMN



BP14
SUB-PLATE



BP15
SUB-PLATE



BP16
ROUND
BASE PLATE



BP17
ROUND
BASE PLATE



BP18
ROUND
BASE PLATE



BP19
SUB-PLATE



BP20
M/C ANGLE
PLATE



BP21
M/C ANGLE
PLATE



BP22
M/C ANGLE
PLATE



BP23
MC NARROW
ANGLE PLATE



BP24
MC NARROW
ANGLE PLATE



BP25
RECTANGULAR
CAST SECTION



BP26
RECTANGULAR
CAST SECTION



BP27
RECTANGULAR
CAST SECTION



BP28
RECTANGULAR
CAST SECTION



HIGH STRENGTH ALUMINUM BASE SERIES

BPA07
SQUARE TOOLING
COLUMN



BPA08
SQUARE TOOLING
COLUMN



BPA09
SQUARE TOOLING
COLUMN



BPA10
DOUBLE SIDED
TOOLING COLUMN



BPA11
DOUBLE SIDED
TOOLING COLUMN



BPA12
DOUBLE SIDED
TOOLING COLUMN



YARDIMCI PARÇALAR

AUX PARTS

PT01 SMOOTH BALL END BOLT 	PT02 SERRATED BALL END BOLT 	PT03 KNURLED NUT 	PT04 FLANGE NUT 
PT05 EXTENSION NUT 	PT06 T-SLOT NUT 	PT07 CLAMPING STUD 	PT08 T-SLOT NUT (GROUND) 
PT09 EYEBOLT 	PT10 LOCATING KEY 	PT11 THREADED DOWEL PINS 	PT12A JACK SCREW TIP 
PT12B JACK SCREW TIP 	PT12C JACK SCREW TIP 	PT13 GRIPPER NUT 	PT14 GRIPPER NUT 
PT15 GRIPPER NUT 	PT16 SWIVEL CLAMPING SCREW 	PT17 SWIVEL SHOULDER CLAMPING SCREW 	PT18 GRIPER SCREW 
PT19 GRIPER SCREW 	PT20 GRIPER PAD 	PT21 GRIPER PAD 	PT22 SPACER 
PT23 "C" WASHER 	PT24 SWING "C" WASHER 	PT25 SPHERICAL WASHER 	PT26 LOCATING KEY 
PT27 LOCATING KEY 	PT28 SWIVEL JOINT SUPPORT 	PT29 SWIVEL PAD 	PT30 LIFTING EYEBOLT 
PT31 SHOULDER BOLT 	PT32 SHOULDER DOWEL PIN 	PT33 KNURLED NUT 	PT34 PROTECTION PLUG 
PT35 SWIVELING JACK SCREW 	PT36 SWIVELING JACK SCREW 	PT37 SWIVEL REST TIP 	PT38 ROTARY T-SLOT NUT 
PT39 CLAMP REST 	PT40 T-SLOT BOLT 	PT41 SWIVEL FLANGE NUTS 	PT42 T-SLOT NUT-BLANK 
PT43 THREADED INSERT 	PT44 POSITIONING BUSHING 	PT45 FEET (FLAT END) 	PT46 FEET (SERRATED END) 

YARDIMCI PARÇALAR

AUX PARTS

PT47
BALL ROLLERS



PT48
BALL ROLLERS



PT49
BALL ROLLERS



SVF SERİSİ

SVF SERIES

SVF-A
FLEXIBLE LINE
UP VISE SERIES

sayfa - page
41-45-46



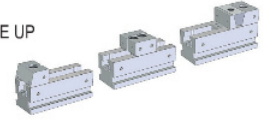
SVF-B
FLEXIBLE LINE
UP VISE SERIES

sayfa - page
42-47-48



SVF-C
FLEXIBLE LINE UP
VISE SERIES

sayfa - page
43-49



SVF-CB
M/C OCTAGONAL
CUBE

sayfa - page
44



SVFX
INDEXING
TABLE

sayfa - page
53-54

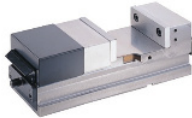


DİĞERLERİ

OTHERS

ZAA
M.C. PARALLEL
VISE

sayfa - page
38



PGV
PGV PRECISION
HYDRAULIC VISE

sayfa - page
39



OK-VISE
LOW-PROFILE
CLAMP

sayfa - page
56



ALV
HIGH STRENGTH
ALUMINUM LINE UP VISE

sayfa - page
55



TCP
TOOL TIGHTENING
FIXTURE

sayfa - page
57



GP
GROUND
PARALLEL SET

sayfa - page
39



MCA
SUPER THIN
SQUARE CHUCKS

sayfa - page
59



MK
CLAMPING KITS
WITH METAL RACKS

sayfa - page
58



NBK
ROUND SUPER
THIN CHUCK

sayfa - page
60



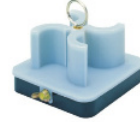
MSP
PORTABLE METAL
CHIP REMOVE BAR

sayfa - page
58



MSR
OIL TANK METAL
CHIPS REMOVER

sayfa - page
58





SATIŞ TAŞLAMA MAKİNA TAKIMLARI SURFACE GRINDING MACHINE TOOLS

AP
ANGLE
GAGE



LEA-A3-6
V BLOCKS



LEA-PV100
A PAIR OF
V BLOCKS



LEA-LA34,44,46
STEEL ANGLE
PLATES



LEA-GC10,12
ANGLE GAGE
BLOCK SET



LEA-GC20
UNIVERSAL
ANGLE BLOCK SET



LEA-VL10
TOOL MAKER VISE
(STAINLESS STEEL)



LEA-VH20
ELECTRODE HOLDERS
(STAINLESS STEEL)



LEA-VH50
ELECTRODE HOLDERS
(STAINLESS STEEL)



LEA-VL20,30
TOOL MAKERS VISE
(STAINLESS STEEL)



LEA-VSU30
TOOL MAKER VISE (STAINLESS
STEEL)



LEA-LK60-100
LK TOOL
MAKER VISE



LEA-VSB15-40
VSB TOOL
MAKER VISE



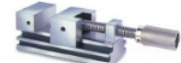
LEA-SV70,90
SUPER PRECISION
TOOL MAKER VISE



LEA-AS60
SUPER PRECISION TOOL
MAKER VISE



LEA-AS70
SUPER PRECISION TOOL
MAKER VISE



LEA-V100
PRECISION
SINE VISE



LEA-VC100
PRECISION
SINE VISE



LEA-L50
PRECISION
SINE VISE



LEA-CSV100
PRECISION COMPOUND
SINE VISE



LEA-VS10
TOOL MAKER VISE
(SMALL)



LEA-EHV20
ELECTRODE
HOLDERS



LEA-VS15-VS40
TOOL MAKER
VISE



LEA-VS50,60
TOOL MAKER
VISE (LARGE)



LEA-SVA20,25,30,40
TOOL MAKER
SINE VISE



LEA-SV200,250,300,400
TOOL MAKER
SINE VISE



LEA-VSD20,25,30,40
TOOL MAKER
VISE



LEA-CHM80
PRECISION
UNIVERSAL VISE



LEA-GT1
MAGNETIC INDUCTION
BLOCK



LEA-GT2
MAGNETIC BLOCK



LEA-GVH1,2
MAGNETIC
V-BLOCK



LEA-GVH30,40
MAGNETIC
V-BLOCK



LEA-BA1,2
MAGNETIC
SQUARE & V-BLOCK



HİDROLİK SIKMA SERİSİ

HYDRAULIC CLAMP SERIES

HC01
HYDRAULIC
SWING CLAMP



HC02
HYDRAULIC
SWING CLAMP



HC03
THREADED
CLAMP CYLINDER



SIKMA PARÇALARI

CLAMP PARTS

CP01
U-CLAMP



CP02
TAPPED-NOSE
STRAP



CP03
GOOSE NECK
CLAMP



CP04
TAPPED END
U-CLAMP



CP05
DOUBLE ENDED
CLAMP



CP06
TAPPED CLAMP
STRAP



CP07
SLOTTED END
CLAMP STRAP



CP08
SWING CLAMP



CP09
SWING CLAMP
MOUNT/EXTENSION



CP10
SWING CLAMP



CP11
FREE JAW
VISE



CP12
ADJUSTABLE
SIDE CLAMP



CP13
ADJUSTABLE
EDGE CLAMP

sayfa - page
33



CP14A
PIVOTING
SIDE CLAMP

sayfa - page
32



CP14B
PIVOTING
SIDE CLAMP

sayfa - page
32



CP14C
PIVOTING
SIDE CLAMP

sayfa - page
32



CP15
SERRATED
BLOCK STOP

sayfa - page
36



CP16
SMOOTH
BLOCK STOP

sayfa - page
36



CP17
U-CLAMP



CP18
PLATE-CLAMP



CP19
FORGED
SWIVEL CLAMP



CP20
FORGED SWIVEL
CLAMP



CP21
UNIVERSAL
CLAMP



CP22
T-SLOT
MINIATURE CLAMP



CP23
FREE VISE

sayfa - page
35



CP24
ECCENTRIC
CAM LOCK



CP25
STEP CLAMP



CP26
THREADED
STRAP CLAMP



CP27
THREADED GOOSE
NECK CLAMP



CP28
GOOSE
NECK CLAMP



CP29
BLOCK STOP

sayfa - page
34



CP30
THIN BLOCK STOP

sayfa - page
34



CP31
CLAMPING
PARTS

sayfa - page
37



CP32
CLAMPING
PARTS

sayfa - page
37



CP33
CLAMPING
PARTS

sayfa - page
38



CP34
BLOCK STOP

sayfa - page
38



CP35A
REPLACEMENT
HARD-JAW



CP35B
REPLACEMENT
HARD-JAW



CP36A
REPLACEMENT
HARD-JAW



CP36B
REPLACEMENT
HARD-JAW



CP36C
REPLACEMENT
HARD-JAW



CP37
POSITIONING
EDGE SUPPORT



DESTEK PARÇALARI

SUPPORT PARTS

SU01
JIG REST
BUTTON



SU02
OFFSET JIG
REST BUTTON



SU03
SHOULDER
SUPPORT CYLINDER



SU04
LOCATING
CYLINDER



SU05
SQUARE
ADAPTER



SU06
SQUARE
ADAPTER



SU07
SQUARE
ADAPTER



SU08
EXTENSION
SUPPORT



SU09
EXTENSION
SUPPORT



SU10
RISER
CYLINDER



SU11
SUPPORT JACK



SU12
POSITIONING
EDGE SUPPORT



SU13
POSITIONING
EDGE SUPPORT



SU14
SPLIT V BLOCK



SU15
SPLIT V BLOCK



SU16
V BLOCK



SU17
V BLOCK



SU18
SUPPORT JACK



SU19
ADJUSTABLE
STOP



SU20
MINI ADJUSTABLE
STOP



SU21
MAGNETIC
SUPPORT JACK



SU22
SUPPORT JACK



SU23
LARGE MAGNETIC
SUPPORT JACK



SU24
KNURLED
ADJUSTING SCREW



SU25
STEP BLOCK



SU26
HARDENED GROUND
PARALLEL

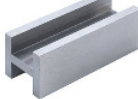


SU27
ADJUSTABLE
PARALLEL BLOCK



BASE COMPONENTS

BC01
H-SECTION



BC02
SQUARE HOLLOW
BLOCK



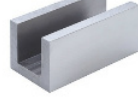
BC03
RECTANGULAR
HOLLOW BLOCK



BC04
CHANNEL
SECTION



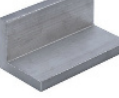
BC05
U-SECTION



BC06
HEAVY DUTY
L-SECTION



BC07
L-SECTION



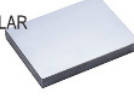
BC08
WEBBED
L-SECTION



BC09
WEBBED
T-SECTION



BC10
STEEL RECTANGULAR
PLATE



BC12
UNEQUAL
L-SECTION



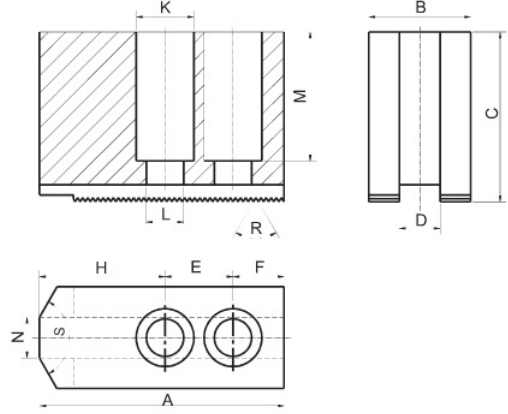
BC13
ANGULAR HOLLOW
BLOCK 45°



BC14
ANGULAR HOLLOW
BLOCK 30°



NUR YUMUŞAK AYAKLAR / SOFT JAWS



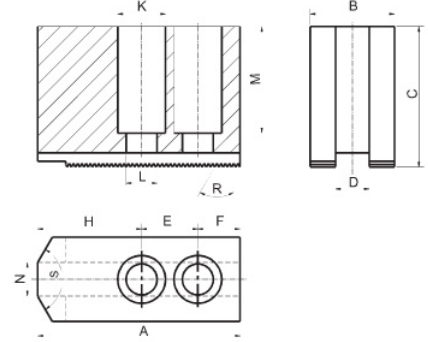
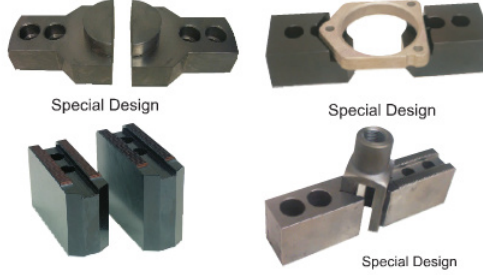
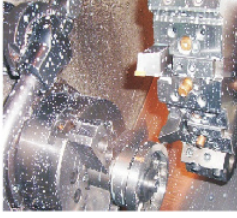
NURB1 STANDARD / SOFT JAWS FOR POWER CHUCKS

AYNA TIPI TYPE OF CHUCK	AYNA ÇAPI CHUCK DIA	KOD / CODE	HATVE (P) SERRETION	A	B	C	Dh7	E	F	H	BOLT	K	L	M	N	S°	R°		
Kitagawa Matsumato Strong	05"	NUR05B120	1,5 X 60°	60	25	30	10	14	16	30	M10	13.5	8.5	15	12	120°	60°		
	06"	NUR06B101		78	30	30	12	20	18	40	M10	17	11	18					
	08"	NUR08B102		98	38	38	14	25	25	48	M12	19	13	20					
Howa Autoblok	08"	NUR08B103		98	38	38	16	25	25	48	M12	19	13	20					
		NUR08B104		98	38	38	17	23	25	50	M12	19	13	20					
Kitagawa Matsumato Strong Howa	10"	NUR10B105		118	43	43	16	30	30	58	M12	19	13	25	15			120°	60°
		NUR10B110		118	43	43	18		30	58	M14	23	15	25					
	12"	NUR12B106		135	48	48	18	30	75	M14	23	15	33						
		NUR12B107		135	48	48	21	30	75	M16	25	17	33						
	15"	NUR15B108		165	58	58	22	43	37	75	M20	32	21	38					
	18"	NUR18B109	165	58	58	25.5	37	75	M20	32	21	38							
21"	NUR21B111	3 X 60°	180	68	68	25	60	35	85	M20	32	21	48						

AYNA TIPI TYPE OF CHUCK	AYNA ÇAPI CHUCK DIA	KOD / CODE	HATVE (P) SERRETION	A	B	C	Dh7	E	F	H	BOLT	K	L	M	N	S°	R°
Autoblok SMW	06"	NUR06B116	1/16" X 90°	78	30	30	14	20	18	40	M10	17	11	18	15	120°	90°
	08"	NUR08B112		98	38	38	17	23	25	50	M12	19	13	20	18		
	10"	NUR10B113		115	43	43	21	30	55	M16	25	17	25	22			
	12"	NUR12B114		135	48	48	21	30	75	M16	25	17	30	22			
	15"	NUR06B115	140	58	58	21	30	80	M16	25	17	40	22				
	15"	NUR15B117	140	58	58	25.5	27	75	M20	32	21	38	—				
	18"	NUR18B118	3/32" X 90°	170	68	68	25.5	38	37	95	M20	32	21	48	—		
	21"	NUR21B119	180	68	68	28	42	100	M20	32	21	48	—				



NUR YUMUŞAK AYAKLAR / SOFT JAWS



NURB2 YÜKSEK / HIGH SOFT JAWS FOR POWER CHUCKS

AYNA TİPİ	AYNA ÇAPI CHUCK DIA	KOD / CODE	HATVE (P) SERRETION	A	B	C	Dh7	E	F	H	BOLT	K	L	M	N	S°	R°
Kitagawa Matsumato Strong	06"	NUR06B201	1,5 X 60°	78	30	50	12	20	18	40	M10	17	11	35	12	120°	60°
		NUR06B202		78	30	60								45			
		NUR06B203		78	30	80								60			
Kitagawa Matsumato Strong	08"	NUR08B204	1,5 X 60°	98	38	60	14	25	25	48	M12	19	13	40	12	120°	60°
		NUR08B205		98	38	80								60			
		NUR08B206		98	38	100								80			
		NUR08B207		98	38	120								95			
		NUR08B208		98	38	60								40			
Howa	08"	NUR08B209	1,5 X 60°	98	38	80	16	25	25	48	M12	19	13	60	12	120°	60°
		NUR08B210		98	38	100								80			
		NUR08B211		98	38	120								95			
		NUR08B212		98	38	60								40			
Autoblok	08"	NUR08B213	1/16"X90°	98	38	80	17	23	25	50	M12	19	13	60	12	120°	90°
		NUR08B214		98	38	100								80			
		NUR08B215		98	38	120								95			
		NUR10B216		115	43	70								50			
Kitagawa Matsumato Strong	10"	NUR10B217	1,5 X 60°	115	43	100	16	30	30	55	M12	19	13	80	15	120°	60°
		NUR10B218		115	43	125								100			
		NUR10B219		115	43	150								120			
Autoblok	10"	NUR10B241	1/16" X 90°	115	43	70	21				M16			50			90°
Autoblok	10"	NUR10B241	1,5 X 60°	115	43	70	21				M16			50			60°
Kitagawa Matsumato Strong	12"	NUR12B220	1,5 X 60°	135	48	80	18	30	30	75	M14	23	15	60	18	120°	60°
		NUR12B221		135	48	100								80			
		NUR12B222		135	48	130								100			
		NUR12B223		135	48	160								120			
Kitagawa Matsumato Strong	12"	NUR12B224	1,5 X 60°	135	48	80	21	30	30	75	M16	25	17	60	20	120°	60°
		NUR12B225		135	48	100								80			
		NUR12B226		135	48	130								100			
		NUR12B227		135	48	160								120			
Kitagawa Matsumato Strong	15"	NUR15B228	1,5 X 60°	165	58	100	22	43	37	85	M20	32	21	80	22	120°	60°
		NUR15B229		165	58	130								100			
		NUR15B230		165	58	160								120			
		NUR15B231		165	58	200								150			
Kitagawa Matsumato Strong	18"	NUR18B232	1,5 X 60°	165	58	100	25,5	43	37	85	M20	32	21	80	25	120°	60°
		NUR18B233		165	58	130								100			
		NUR18B234		165	58	160								120			
		NUR18B235		165	58	200								150			
Kitagawa Matsumato Strong	21"	NUR21B236	3 X 60°	180	68	100	25	60	35	85	M20	32	21	70	25	120°	60°
		NUR21B237		180	68	130								100			
		NUR21B238		180	68	160								120			
		NUR21B239		180	68	200								150			
		NUR21B240		180	68	250							180				

AYNA TİPİ	AYNA ÇAPI CHUCK DIA	KOD / CODE	HATVE (P) SERRETION	A	B	C	Dh7	E	F	H	BOLT	K	L	M	N	S°	R°

Özel ölçülü siparişleriniz için lütfen bizi arayınız. / Please contact with us for your special orders.

TST T-SOMUNLAR / T-NUTS

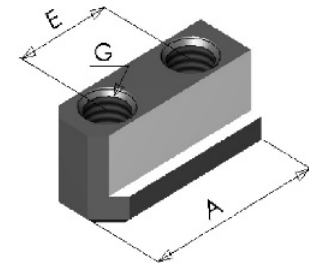
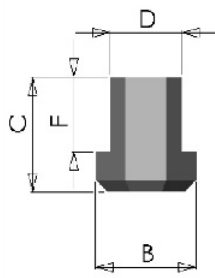


Fig.1

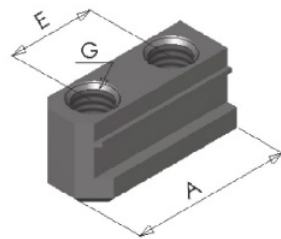
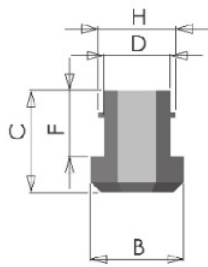


Fig.2

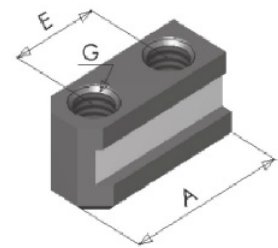
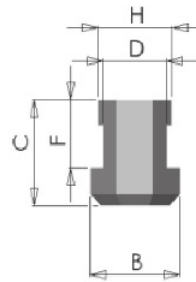


Fig.3

AYNA TIPI TYPE OF CHUCK	T-SOMUN T-NUTS	KOD / CODE	Fig.	A	B	C	Dh7	E	F	G	H
Kitagawa Matsumato Strong	06"	NUR06TST01	1	36	17	18,5	12	20	12	M10	-
	08"	NUR08TST02	1	46,5	20,5	20,5	14	25	12	M12	-
	08"	NUR08TST03	1	48	20,5	25,5	14	25	16	M12	-
	10"	NUR10TST04	1	51	22,5	21,5	16	30	13	M12	-
	10"	NUR12TST05	1	55	22,5	25,5	16	30	16,5	M12	-
	12"	NUR12TST06	1	55,5	26,5	33,5	18	30	20	M14	-
	12"	NUR12TST07	1	55,5	29,5	27,5	21	30	16	M16	-
Autoblok	06"	NUR06TST08	2	36	17	18,5	12	20	12	M10	14
Autoblok	08"	NUR08TST09	3	43	19	20,5	17	23	13	M12	-



TT

TAKIM TUTUCULAR / TOOL HOLDERS (FOR CNC LATHES)



Çeşitli marka ve model CNC Tornalar için;

*Delik Kater Tutucular

*U-Drill Tutucular

*Alın Kater Tutucular

*Siparişe göre üretim

MAZAK

HYUNDAI

TAKISAWA TW.

OKUMA

KIA

LER

MORI SEIKI

DAEWOO

HWA CHEON

TAKISAWA JP.

FEELER

GOODWAY

VICTOR

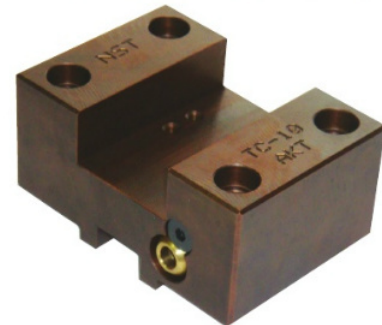
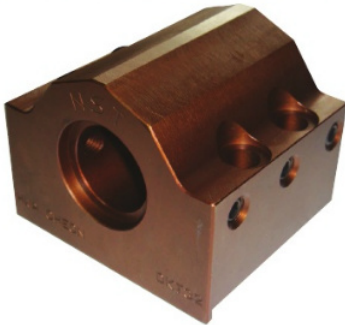
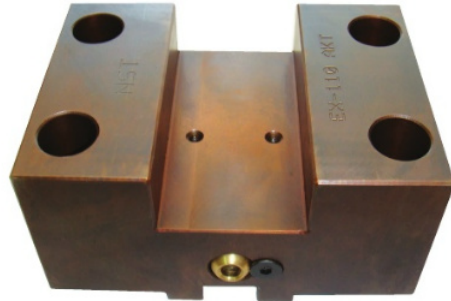
For various model and brand of CNC Lathe;

*Boring Bar Holders

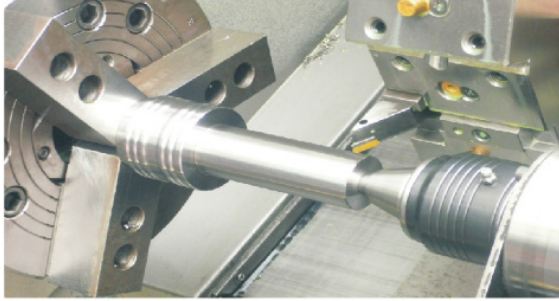
*U-Drill Holders

*Square Tool Holder

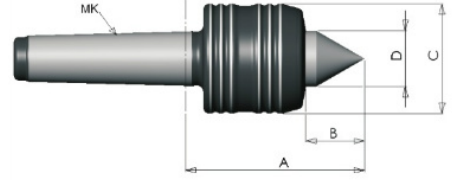
*Special production according to order.



PMK CNC DÖNER PUNTALAR
CNC REVOLVING TAIL STOCK CENTER

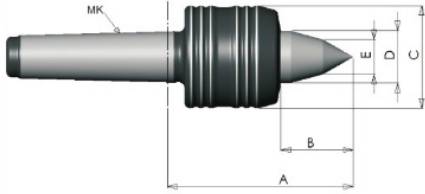


PMK 01



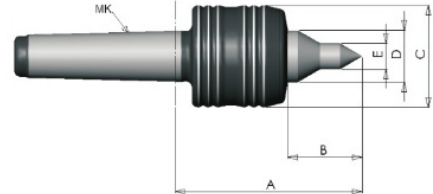
ÖLÇÜ/SIZE	PMK 401	PMK 501
MK	4	5
A	105	120
B	37	47
C	63	73
D	32	40
Max. Salgı Max. Concentricity	0.005	0.005
Max. Devir (r.p.m) [min ⁻¹]	3800	3300

PMK 02

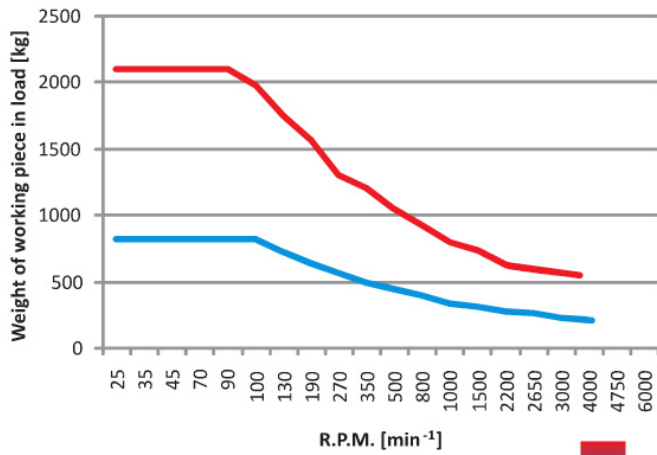


ÖLÇÜ/SIZE	PMK 402	PMK 502
MK	4	5
A	116	131
B	46	58
C	63	73
D	32	40
E (*)	16/12	18/14
Max. İş Parçası Ağırlığı [kg] Max. Weight of work pcs. [kg]	500	1200
Max. Salgı Max. Concentricity	0.005	0.005
Max. Devir (r.p.m) [min ⁻¹]	3800	3300

PMK 03

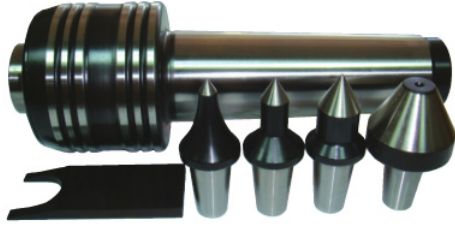


ÖLÇÜ/SIZE	PMK 403	PMK 503
MK	4	5
A	112	131
B	44	58
C	63	73
D	32	40
E (*)	16/12	18/14
Max. İş Parçası Ağırlığı [kg] Max. Weight of work pcs. [kg]	800	1600
Max. Salgı Max. Concentricity	0.005	0.005
Max. Devir (r.p.m) [min ⁻¹]	3800	3300



* → 2 tiptir
2 type

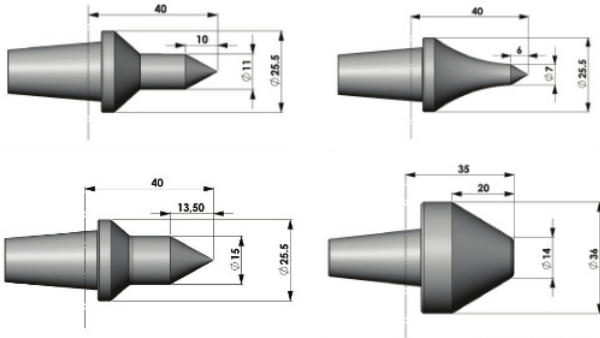
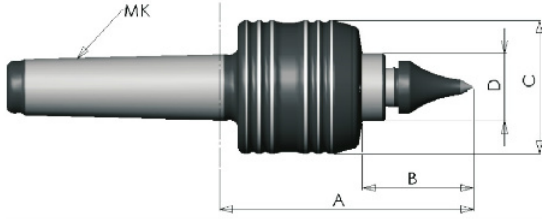
Detaylar için lütfen web sitemizi ziyaret ediniz.
Please visit our web site for more information.



PMK CNC DÖNER PUNTALAR
CNC REVOLVING TAIL STOCK CENTER
PMK -SET TAKMA UCLU CNC DÖNER PUNTA
CNC REVOLVING TAIL STOCK CENTER
WITH REPLACEMENT POINTS AND NOSE

PMK 05-SET

(4 Ad. Punta ucu + 1 Ad. Anahtar)
(4 Pcs Points and Nose + 1 Pc. Wrench)

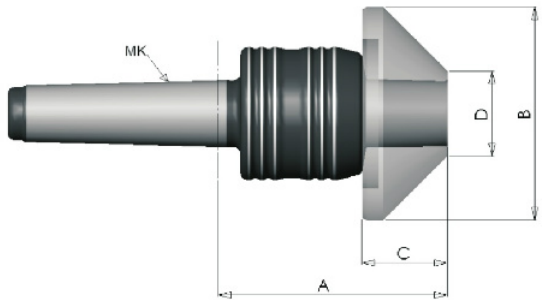


ÖLÇÜ/SIZE	PMK 405-SET	PMK 505-SET
MK	4	5
A	119	124
B	51	51
C	63	73
D	32	35
Max. Salgı Max. Concentricity	0.01	0.01
Max. Devir (r.p.m) [min ⁻¹]	3800	3300

PMK 04

TAKMA UCLU BORU PUNTASI

BULL NOSE LIVE CENTER WITH REPLACEMENT NOSE



ÖLÇÜ/SIZE	PMK 404A	PMK 404B	PMK 404C	PMK 504A	PMK 504B	PMK 504C
MK	4	4	4	5	5	5
A	103	103	108	108	108	113
B	78	98	148	78	98	148
C	28	32	50	32	28	50
D	34	44	60	44	34	60
Max. Salgı Max. Concentricity	0.01	0.01	0.01	0.01	0.01	0.01
Max. Devir (r.p.m) [min ⁻¹]	3800	3800	3800	3300	3300	3300



ÇUBUK ÇEKME APARATI ÖRNEK PROGRAMI (FANUC CONTROL)

PROGRAM BAŞLATMA: (Parçayı 20mm boy'a çekme örnek programı)

:0100 (ÇUBUK ÇEKME APARATI ANA PRG.)

M22

M98 P110 L30

P= Alt Prg. Numarası L= Tekrar sayısı

M30

:0110 (ALT PRG.)

M22 (CEKME APARATI)

G0 X200 Z170

T0808

X100 Z-38,5

X60

G98 G1 X0 F3000

G98= İlerleme hızı başlatma mm/dk.cinsinden

M69

M69= Ayna açma

G4 U1

G4 = Bekleme zamanı U1 = 1saniye

Z-15 F2000

M68

M68= Ayna kapama

G4 U1

G0 X100

G99 X200 Z170 T0

G99= İlerleme birimi mm/devir cinsinden (G98'i iptal eder)

M1

(Örnektir.İsteğe bağlı program yazılır.)

M22(ALIN ÇAP FINİŞ)

G0 X200 Z170

G97 S2000 M3 M16 T0202

G0 X20 Z0

G1 X-0,5 F0,2

W0,5

G0 X13,5

G1 X15,9 A135 R1,5

Z-11

X13,9 Z-12,5

Z-20

X20

G0 X200 Z170 T0

M1

M22(3mm KESME) (ÖRNEKTİR)

G0 X200 Z170

G97 S2000 M3 M16 T0303

G0 X25 Z-23

X19 M82

M82 = Parça yakalama-
kolu aşağı .

G1 X6 F0,1

S600

X2 F0,7

G0 X25

M83

M83 = Parça yakalama kolu yukarı .

G0 X200 Z170 T0 M5

M99

M99 = Ana programa geçiş
(Programı tekrarlar)

CCA

ÇUBUK ÇEKME APARATI (CNC TORNALAR İÇİN) BAR PULLER (FOR CNC LATHES)

*Çekme kapasitesi 0-Ø80mm arası

Max.pulling dia. 0-Ø80mm

*Kolay kullanım

Easy to use

*Yüksek performans

High performance

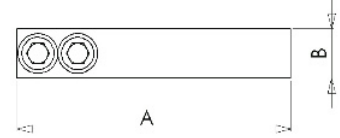
*Maksimum hız

Max.speed

*Örnek fonuc program dahildir

Sample fonuc program is included

KOD / CODE	A	B
CCA8020	110	20
CCA8025	110	25

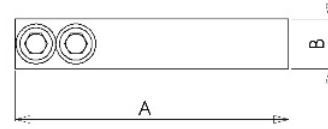
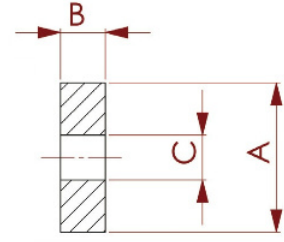


TCA TIRTIL ÇEKME APARATI (CNC TORNALAR İÇİN) KNURLING TOOL (FOR CNC LATHES)

- *Şık tasarımlı
- *Smart design
- *Tezgahınızı yormaz
Yükü üzerine alır
- *Does not force your machine,
It support the force
- *Temiz yüzey kalitesi elde
etmenizi sağlar
- *Let you have a fine surface
- *Hareketli tırtıl yuvaları sayesinde düz tırtıl ile helis yüzey, helis tırtıl ile düz tırtıl yüzeyi elde edebilirsiniz.
- *Movable heads lets you to use straight knurling roll to make helical marks, with helical knurling roll to make straight marks.

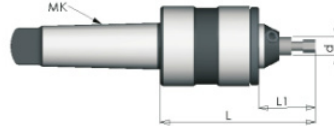
KOD/CODE	A	B	C
TCU2006	20	6	6
TCU2008	20	8	6
TCU2010	20	10	6

KOD/CODE	KAPASİTE/CAPACITY	A	B
TCA3020	Ø30	110	20
TCA3025	Ø30	110	25



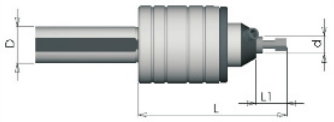
CKA ÇOKLU KÖŞE BASMA APARATI BROCHER FOR POLYGONAL HOLES

TİP/TYPE : MK



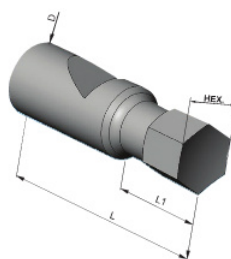
KOD / CODE	MK	L	L1	Ød	HEX.
CKAMK3310	3	97	18	12	3-10
CKAMK4310	4	97	18	12	3-10

TİP/TYPE : D



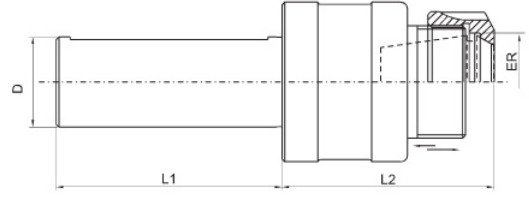
KOD / CODE	ØD	L	L1	Ød	HEX.
CKAD20310	20	93	18	12	3-10
CKAD25310	25	93	18	12	3-10
CKAD32310	32	93	18	12	3-10
CKAD40310	40	93	18	12	3-10

TİP/TYPE : B



KOD / CODE	ØD	L	L1	HEX.
CKAB1203	12	40	18	3
CKAB1204	12	40	18	4
CKAB1205	12	40	18	5
CKAB1206	12	40	18	6
CKAB1208	12	40	18	8
CKAB1210	12	40	18	10

KCA KILAVUZ ÇEKME APARATI
TAPPING ATTACHMENT



KCA20				
KOD / CODE	D	ER	L1	L2
KCA 2016	20	ER16	55	60
KCA 2020	20	ER20	55	60
KCA 2025	20	ER25	55	60
KCA 2032	20	ER32	55	75

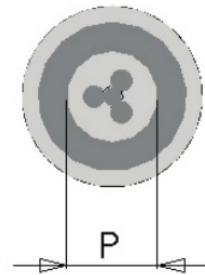
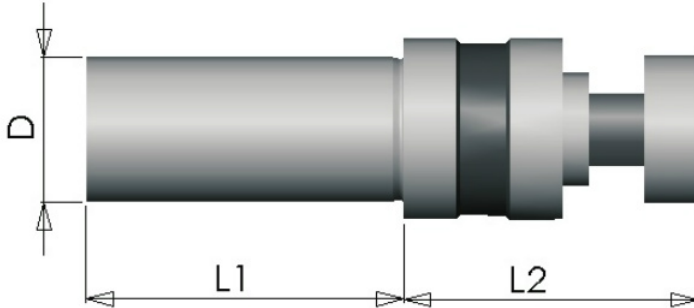
KCA25				
KOD / CODE	D	ER	L1	L2
KCA 2516	25	ER16	60	60
KCA 2520	25	ER20	60	60
KCA 2525	25	ER25	60	60
KCA 2532	25	ER32	60	75

KCA32				
KOD / CODE	D	ER	L1	L2
KCA 3216	32	ER16	70	60
KCA 3220	32	ER20	70	60
KCA 3225	32	ER25	70	60
KCA 3232	32	ER32	70	75
KCA3240	32	ER40	70	75

KCA40				
KOD / CODE	D	ER	L1	L2
KCA 4032	40	ER32	80	75
KCA 4040	40	ER40	80	75

KCA50				
KOD / CODE	D	ER	L1	L2
KCA 5032	50	ER32	100	75
KCA 5040	50	ER40	100	75

PCA PAFTA ÇEKME APARATI
SCREW DIE ATTACHMENT



KOD / CODE	ØD	P	L1	L2
PCA2020	20	20	70	65
PCA2025	20	25	70	65
PCA2520	25	20	70	65
PCA2525	25	25	70	65
PCA3220	32	20	70	65
PCA3225	32	25	70	65

PT

PENS TUTUCULAR SİLİNDİRİK ŞAFTLI
COLLETS HOLDER WITH STRAIGHT SHANK

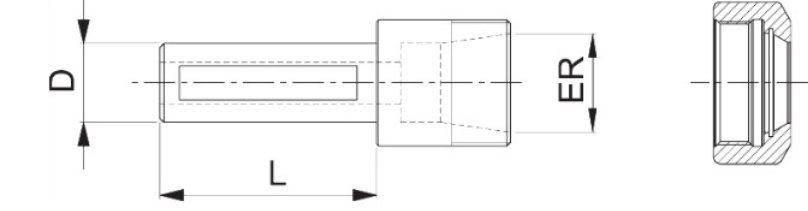
PT12			
KOD / CODE	D	ER	L
PT12-ER11	12	11	50
PT12-ER11	12	11	100
PT12-ER11	12	11	150

PT16			
KOD / CODE	D	ER	L
PT16-ER11	16	11	50
PT16-ER11	16	11	100
PT16-ER11	16	11	150

PT16			
KOD / CODE	D	ER	L
PT16-ER16	16	16	50
PT16-ER16	16	16	100
PT16-ER16	16	16	150

PT20			
KOD / CODE	D	ER	L
PT20-ER16	20	16	50
PT20-ER16	20	16	100
PT20-ER16	20	16	150
PT20-ER20	20	20	50
PT20-ER25	20	25	50
PT20-ER32	20	32	50

PT25			
KOD / CODE	D	ER	L
PT25-ER16	25	16	60
PT25-ER16	25	16	100
PT25-ER16	25	16	150
PT25-ER20	25	20	60
PT25-ER32	25	32	60



PT32			
KOD / CODE	D	ER	L
PT32-ER20	32	20	70
PT32-ER25	32	25	70
PT32-ER32	32	32	70
PT32-ER40	32	40	70

PT40			
KOD / CODE	D	ER	L
PT40-ER25	40	25	80
PT40-ER32	40	32	80
PT40-ER40	40	40	80

PT50			
KOD / CODE	D	ER	L
PT50-ER32	50	32	100
PT50-ER40	50	40	100
PT50-ER50	50	50	100



PTMK

KONİK ŞAFTLI PENS TUTUCULAR
COLLET HOLDERS WITH CONICAL SHANK

KOD / CODE	MK	TİP TYPE	TİP TYPE
PTMK2-ER25	2	1	2
PTMK3-ER32	3	1	2
PTMK4-ER32	4	1	2
PTMK5-ER32	5	1	2
PTMK5-ER40	5	1	2



TİP / TYPE 1



TİP / TYPE 2

PTB

ÖZEL PENS TUTUCULAR (MASA ÜSTÜ MATKAPLAR İÇİN)
SPECIAL COLLET HOLDERS (FOR DESK-TOP DRILLING MACHINES)

KOD/CODE
B16-ER16
B16-ER20
B16-ER25
B18-ER16
B18-ER20
B18-ER25



PNS

**PENSLER / COLLETS
ER TİPİ / ER TYPE**

**ER - PENSLER
ER - COLLETS**



ER 11



ER 16



ER 20



ER 25



ER 32



ER 40

**ER - SOMUNLAR
ER - NUTS**



ER 11 M14X0,75 HEX.



ER 16 M22X1,5 HEX.



ER 20 M25X1,5 HEX.



ER 25 M32X1,5 STND.



ER 32 M40X1,5 STND.



ER 40 M50X1,5 STND.



PENS TİPİ / COLLET TYPE	MİKTAR / QUANTITY	ÇAPLAR / DIA.	DISTANCE
ER 11	SET 13 AD / PCS	Ø1mm – Ø07mm	0,5mm
ER 16	SET 10 AD / PCS	Ø1mm – Ø10mm	1,0mm
ER 20	SET 12 AD / PCS	Ø2mm – Ø13mm	1,0mm
ER 25	SET 15 AD / PCS	Ø2mm – Ø16mm	1,0mm
ER 32	SET 18 AD / PCS	Ø3mm – Ø20mm	1,0mm
ER 40	SET 23 AD / PCS	Ø4mm – Ø26mm	1,0mm

ER - ANAHTARLAR / ER - WRENCH



ER 25 STANDARD



ER 32 STANDARD



ER 40 STANDARD

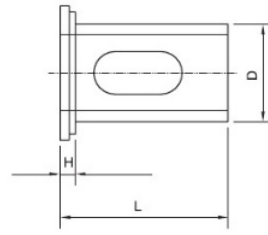
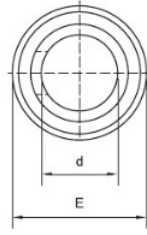
U-DRILL TUTUCULAR / U-DRILL SLEEVES

UDT25						
KOD / CODE	D	d	L	H	E	Tip Type
UDT25.16	25	16	55	5	34	B
UDT25.20	25	20	55	5	34	B

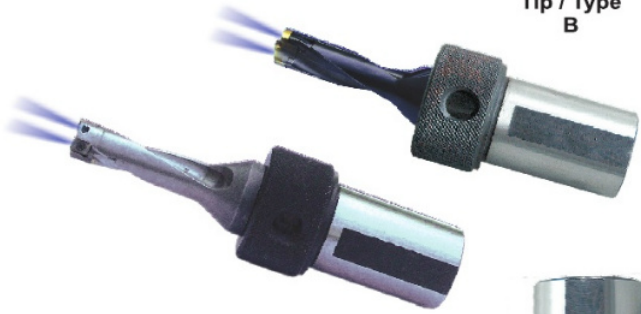
UDT32						
KOD / CODE	D	d	L	H	E	Tip Type
UDT32.16	32	16	70	20	44	A
UDT32.20	32	20	70	20	44	B
UDT32.25	32	25	58	8	44	B

UDT40						
KOD / CODE	D	d	L	H	E	Tip Type
UDT40.16	40	16	75	20	49	A
UDT40.20	40	20	75	20	49	A
UDT40.25	40	25	65	7	49	B
UDT40.32	40	32	65	7	49	B

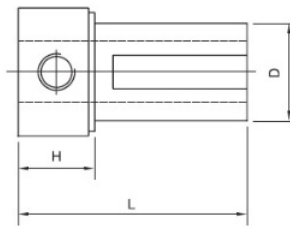
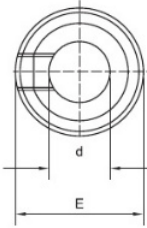
UDT50						
KOD / CODE	D	d	L	H	E	Tip Type
UDT50.16	50	16	80	20	59	A
UDT50.20	50	20	80	20	59	A
UDT50.25	50	25	80	20	59	A
UDT50.32	50	32	70	10	59	B
UDT50.40	50	40	70	10	59	B



Tip / Type B



Tip / Type A

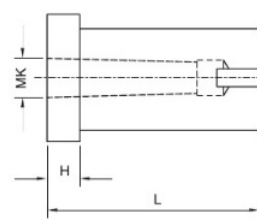
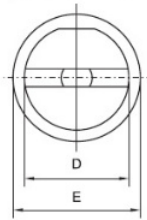


MORS KONİK TUTUCU (SİLİNDRİK ŞAFTLI) / CONICAL BUSHES WITH STRAIGHT SHANK

MKT25					
KOD / CODE	D	MK	L	H	E
MK25-01	25	1	65	10	34
MK25-02	25	2	78	10	34

MKT32					
KOD / CODE	D	MK	L	H	E
MK32-01	32	1	65	10	39
MK32-02	32	2	78	10	39
MK32-03	32	3	97	10	39

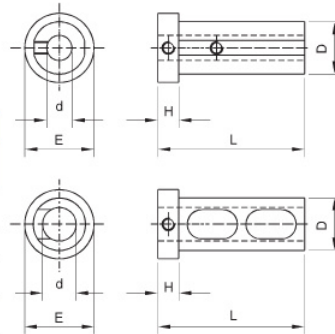
MKT40					
KOD / CODE	D	MK	L	H	E
MK40-02	40	2	80	10	49
MK40-03	40	3	97	10	49
MK40-04	40	4	115	20	49



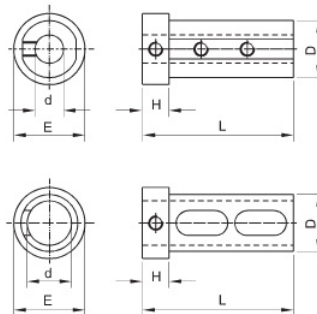
MKT50					
KOD / CODE	D	MK	L	H	E
MK50-02	50	2	78	10	59
MK50-03	50	3	97	10	59
MK50-04	50	4	120	20	59
MK50-05	50	5	150	50	59

DELİK KATER TUTUCULAR / BORING BAR SLEEVES

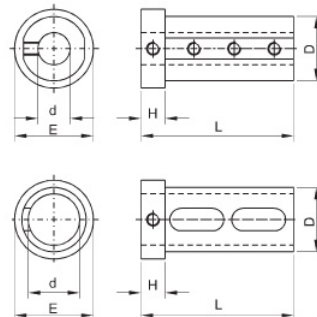
DKT25						
KOD / CODE	D	d	L	H	E	Tip Type
DKT25-10	25	10	70	10	34	A
DKT25-12	25	12	70	10	34	A
DKT25-16	25	16	75	13	34	B
DKT25-20	25	20	75	13	34	B



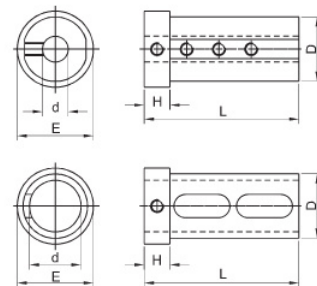
DKT32						
KOD / CODE	D	d	L	H	E	Tip Type
DKT32-10	32	10	75	15	39	A
DKT32-12	32	12	75	15	39	A
DKT32-16	32	16	85	15	39	A
DKT32-20	32	20	85	15	39	B
DKT32-25	32	25	85	15	39	B



DKT40						
KOD / CODE	D	d	L	H	E	Tip Type
DKT40-12	40	12	85	15	49	A
DKT40-16	40	16	85	15	49	A
DKT40-20	40	20	95	15	49	A
DKT40-25	40	25	95	15	49	B
DKT40-32	40	32	95	15	49	B



DKT50						
KOD / CODE	D	d	L	H	E	Tip Type
DKT50-16	50	16	100	18	59	A
DKT50-20	50	20	100	18	59	A
DKT50-25	50	25	120	18	59	A
DKT50-32	50	32	120	18	59	B
DKT50-40	50	40	120	18	59	B



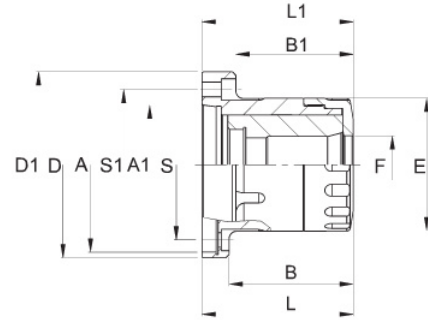


AYNALAR / CHUCKS

HPT.EX DIN 55021

CNC TORNA DIŐTAN İÇE
HİDROLİK PENS TUTUCUSU
POWER CHUCK FOR COLLETS
CLAMPS OUTSIDE TO INSIDE
6" / 8" / 10"

A2/5 -A2/6 - FLAT 140

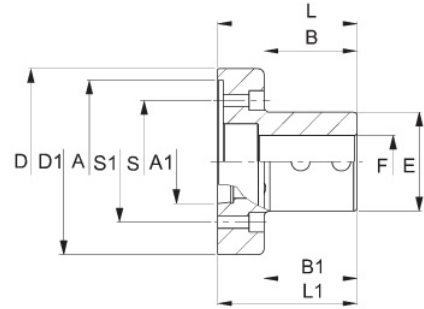


HPT.IN

CNC TORNA İÇTEN DIŐA
HİDROLİK PENS TUTUCUSU
POWER CHUCK FOR COLLETS
CLAMPS INSIDE TO OUTSIDE
6" / 8" / 10"

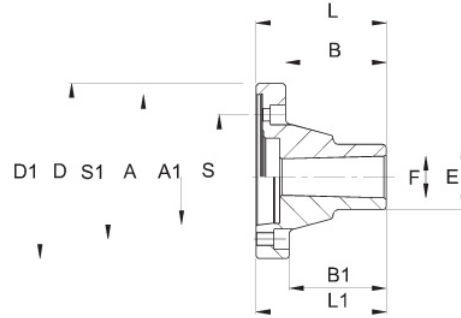
A2/5 -A2/6 - FLAT 140

Lütfen Pens Tipi için bizi arayınız.
Please contact with us for collet type.



MKA

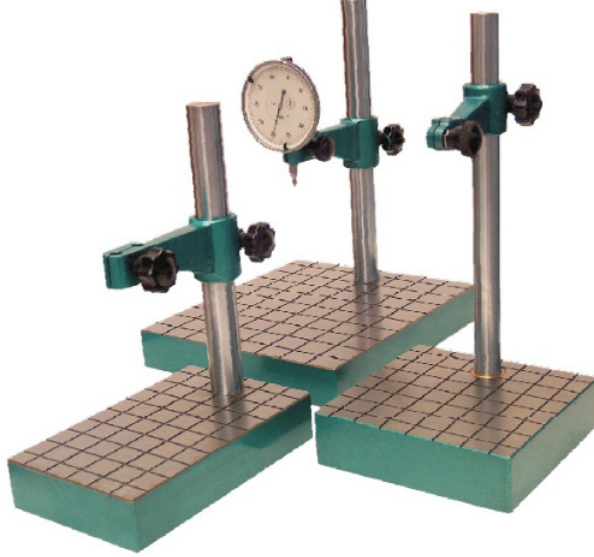
MORS KONİK AYNASI
CONICAL CHUCK
6" / 8" / 10"



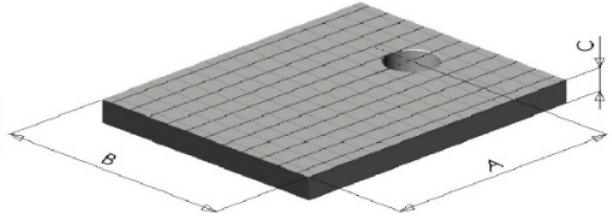
KOD	AYNA (Ø)	A	A1	B	B1	D	D1	E	F	L	L1	S	S1
HPT.EX	6"	FLAT 140	-	98	-	158	-	100	51.5	123	-	104.8	-
		-	A2/5	-	104	-	138	100	51.5	-	132	-	104.8
	8"	-	A2/6	-	104	-	168	118	51.5	-	134	-	133.4
HPT.IN	6"	FLAT 140	-	80	-	158	-	85	45	119	-	104.8	-
		-	A2/5	-	80	-	138	85	45	-	119	-	104.8
	8"	-	A2/6	-	104	-	168	85	45	-	134	-	133.4
-		A2/6	-	104	-	168	100	60	-	134	-	133.4	
MKA	6"	FLAT 140	-	85	-	158	-	55	MK-4	110	-	104.8	-
		-	A2/5	-	82	-	138	55	MK-4	110	-	-	104.8
	8"	-	A2/6	-	105	-	168	60	MK-4	135	-	-	133.4
		-	A2/6	-	105	-	168	64	MK-5	135	-	-	133.4



POS PARÇA ÖLÇME STANDI
PARTS MEASUREMENT STAND



KOD / CODE	A	B	C
POS2020	200	200	35
POS1614	160	140	35
POS1214	120	145	35
POS1010	100	100	35
POS0909	90	90	35
POS0808	80	80	35



DDA DAYAMA APARATI / BAR STOPPER

- * Üniversal ve CNC tornalar için / For conv. and CNC Lathes
- * Fener Mili Çapları Ø32, Ø42, Ø52, Ø62 için 4 çeşit dayama aparatı
- * Spindle diameter for Ø32, Ø42, Ø52, Ø62 4 type of bar stopper



DDA 062



DDA K01

KOD / CODE	SPINDLE DIA.
DDA-32	Ø32
DDA-42	Ø42
DDA-52	Ø52
DDA-62	Ø62

BP02

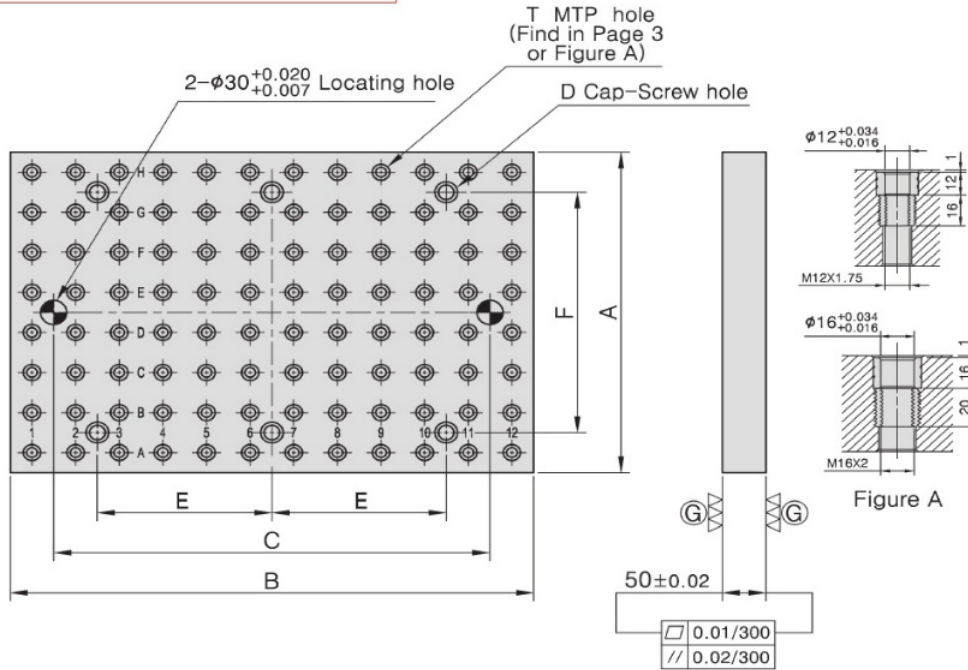
M/C BASE PLATE



- Material/Finish:
Material: Cast Iron FC300(JIS) / GG30(DIN)
Heat treated (Normalized) Alignment Bushing: SUJ2(JIS) / 100Cr6(DIN) heat treated.
Threaded Insert: S45c (JIS)/ CK45 (DIN), heat treated.
MTP hole spacing: 50 ± 0.02
- Application: Vertical Machining Center.
- Features: Alignment bushing & thread insert at every hole location, easily adapts to standardized jig components.

M/C TABLA

- Malzeme/Finish:
Malzeme: Çelik Döküm FC300 (JIS) / GG30 (DIN)
Normalize edilmiş
- Merkezleme Burcu : SUJ2 (JIS) / 100Cr6 (DIN), sertleştirilmiş
- Dişler: S45C(JIS) / CK45(DIN), sertleştirilmiş
- MTP Delik Aralıkları : 50 ± 0.02
- Uygulama : Dikey işleme merkezi
- Özellikler : Her delikte sertleştirilmiş merkezleme burçlu&dişli delik, standart bağlama aparatlarını kolayca adapte edebilme



MODEL NO.	A	B	C	D	E	F	T	No. of MTP holes	kg	MODEL NO.	A	B	C	D	E	F	T	No. of MTP holes	kg		
BP02-50400-0600-12	400	600	-	φ 18	-	-	φ 12	M12	96	90	BP02-50400-0600-16	400	600	-	φ 18	-	-	φ 16	M16	96	87
BP02-50500-0600-12	500	600	-	φ 18	-	-	φ 12	M12	120	112	BP02-50500-0600-16	500	600	-	φ 18	-	-	φ 16	M16	120	108
BP02-50600-0600-12	600	600	-	φ 18	-	-	φ 12	M12	144	134	BP02-50600-0600-16	600	600	-	φ 18	-	-	φ 16	M16	144	129
BP02-50400-0800-12	400	800	-	φ 18	-	-	φ 12	M12	128	119	BP02-50400-0800-16	400	800	-	φ 18	-	-	φ 16	M16	128	115
BP02-50450-0900-12	450	900	-	φ 18	-	-	φ 12	M12	162	151	BP02-50450-0900-16	450	900	-	φ 18	-	-	φ 16	M16	162	146
BP02-50500-1000-12	500	1000	-	φ 18	-	-	φ 12	M12	200	173	BP02-50500-1000-16	500	1000	-	φ 18	-	-	φ 16	M16	200	171
BP02-50600-1200-12	600	1200	-	φ 18	-	-	φ 12	M12	288	256	BP02-50600-1200-16	600	1200	-	φ 18	-	-	φ 16	M16	288	244

*Special Design Welcome !

BP03

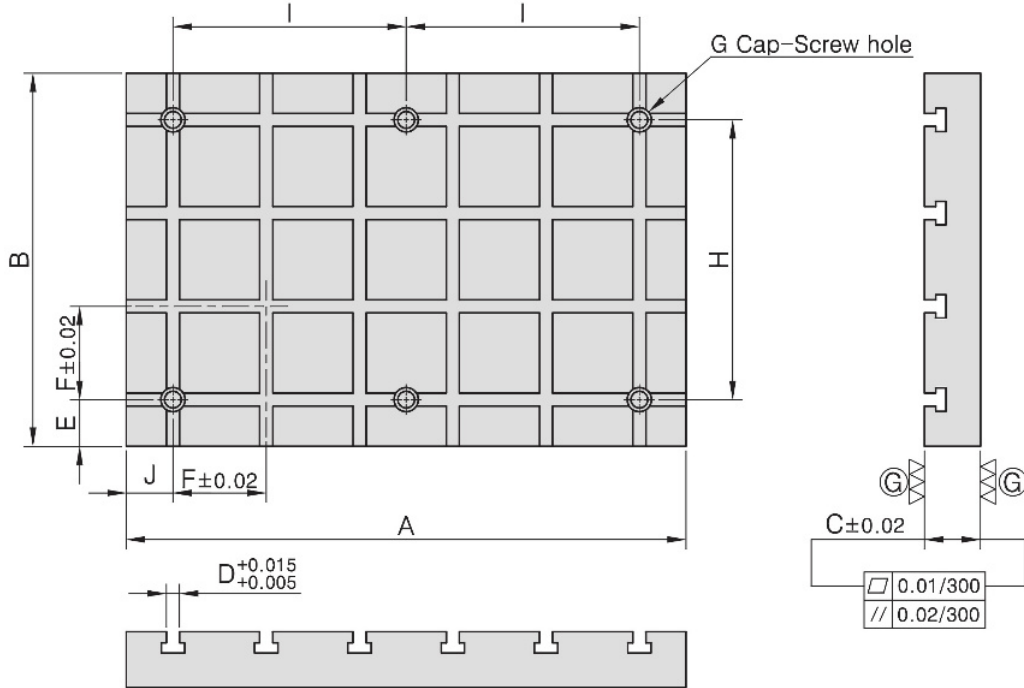
M/C BASE PLATE



- Material/Finish:
Material: Cast Iron FC300(JIS) / GG30(DIN)
Heat treated (Normalized)
- Application: Vertical Machining Center.
- Features: T-Slots running in 2 directions, easily adapts to standardized jig components.
- Eye bolt included.

M / C TABLA

- Malzeme/Finish:
Malzeme: Çelik Döküm FC300 (JIS) / GG30 (DIN)
Normalize edilmiş
- Uygulama : Dikey işleme merkezi
- Özellikler : Civatalar dahil



MODEL NO.	A	B	C	D	E	F	G	H	I	J	kg
BP03-60400-0600-14	600	400	60	14	50	100	φ 18	-	-	50	120
BP03-60500-0600-14	600	500	60	14	50	100	φ 18	-	-	50	150
BP03-60600-0600-14	600	600	60	14	50	100	φ 18	-	-	50	179
BP03-60400-0800-14	800	400	60	14	50	100	φ 18	-	-	50	160
BP03-60450-0900-14	900	450	60	14	75	100	φ 18	-	-	50	204
BP03-60500-1000-14	1000	500	60	14	50	100	φ 18	-	-	50	248
BP03-60600-1200-14	1200	600	60	14	50	100	φ 18	-	-	50	358
MODEL NO.	A	B	C	D	E	F	G	H	I	J	kg
BP03-75400-0600-18	600	400	75	18	50	100	φ 18	-	-	50	100
BP03-75500-0600-18	600	500	75	18	50	100	φ 18	-	-	50	125
BP03-75600-0600-18	600	600	75	18	50	100	φ 18	-	-	50	149
BP03-75400-0800-18	800	400	75	18	50	100	φ 18	-	-	50	133
BP03-75450-0900-18	900	450	75	18	75	100	φ 18	-	-	50	169
BP03-75500-1000-18	1000	500	75	18	50	100	φ 18	-	-	50	207
BP03-75600-1200-18	1200	600	75	18	50	100	φ 18	-	-	50	296

*Special Design Welcome !



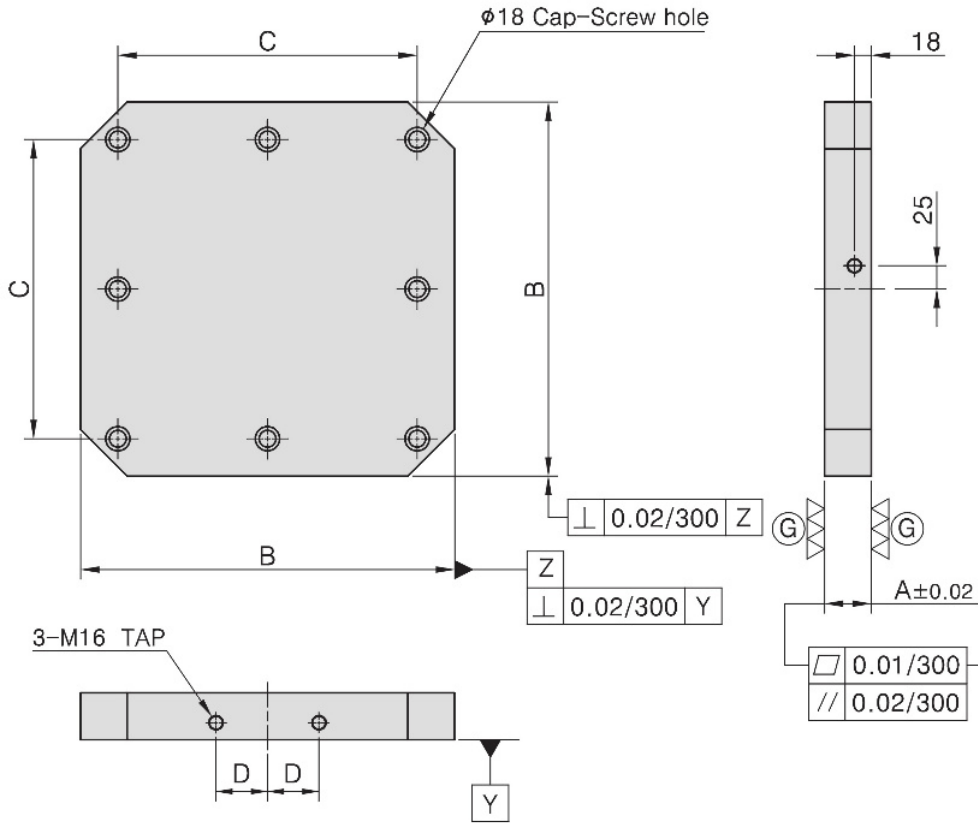
BP04

M/C BASE PLATE

- Material/Finish:
Material: Cast Iron FC300(JIS) / GG30(DIN)
Heat treated (Normalized)
- Application: Horizontal Machining Center.
- Features: Ready to accept a hole pattern for your special jig.
- Eye bolt included.

M/C TABLA

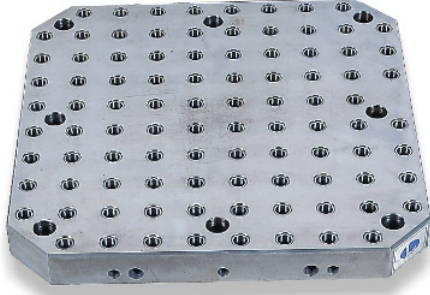
- Malzeme / Finish :
Malzeme : Çelik Döküm FC 300 (JIS) / GG30 (DIN)
Isıl İşlemli (Normalize Edilmiş)
- Uygulama : Yatay İşleme Merkezi
- Özellikler : Özel bağlama aparatlarınız için
bağlama deliklerini isteğe göre delebilme
Civatalar dahil



MODEL NO.	A	B	C	D	No. of Mounting holes	kg
BP04-50400-0400	50	400	320	55	4	57
BP04-50500-0500	50	500	400	75	8	88
BP04-50630-0630	50	630	500	100	8	140
BP04-50800-0800	50	800	640	135	8	270

*Special Design Welcome !

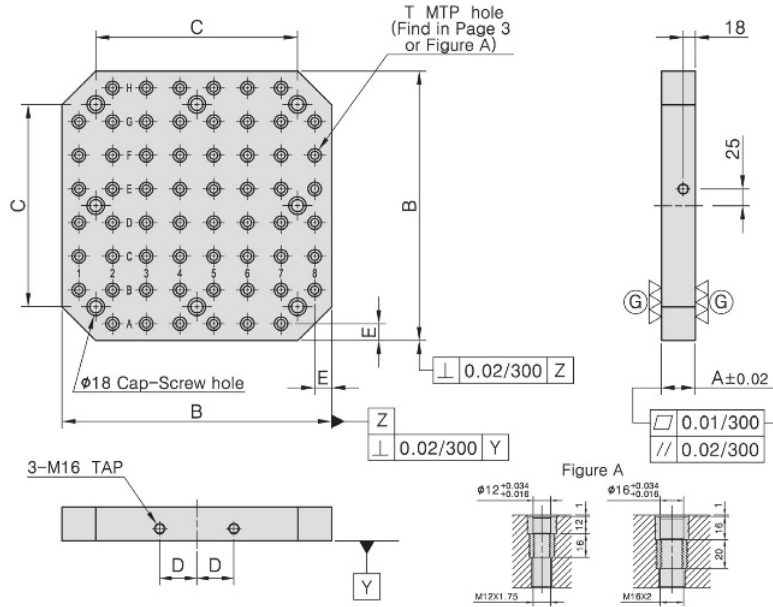
BP05 M/C BASE PLATE



- Material/Finish:
Material: Cast Iron FC300(JIS) / GG30(DIN)
Heat treated(Normalized) Alignment
Bushing: SUJ2(JIS) / 100Cr6(DIN), heat treated.
Threaded Insert: S45C(JIS) / CK45(DIN), heat treated.
MTP hole spacing: 50 ± 0.02
- Application: Horizontal Machining Center.
- Features: Alignment bushing & thread insert at every hole location, easily adapts to standardized jig components.

M / C TABLA

- Malzeme/Finish:
Malzeme: Çelik Döküm FC300 (JIS) / GG30 (DIN)
Normalizasyon edilmiş
- Merkezleme Burcu : SUJ2 (JIS) / 100Cr6 (DIN), sertleştirilmiş
- Dişler: S45C(JIS) / CK45(DIN), sertleştirilmiş
- MTP Delik Aralıkları : 50 ± 0.02
- Uygulama : Yatay ve dikey işleme merkezi
- Özellikler : Her delik içinde sertleştirilmiş merkezleme burcu ve dişli burc mevcuttur. Standart bağlama aparatlarını kolayca adapte edebilme.



MODEL NO.	A	B	C	D	E	T	No. of MTP holes	No. of Mounting holes	kg	
BP05-50400-0400-12	50	400	320	55	25	φ 12	M12	59	4	54
BP05-50500-0500-12	50	500	400	75	25	φ 12	M12	93	8	83
BP05-50630-0630-12	50	630	500	100	40	φ 12	M12	139	8	134
BP05-50800-0800-12	50	800	640	135	25	φ 12	M12	229	8	255
BP05-50400-0400-16	50	400	320	55	25	φ 16	M16	59	4	52
BP05-50500-0500-16	50	500	400	75	25	φ 16	M16	93	8	80
BP05-50630-0630-16	50	630	500	100	40	φ 16	M16	139	8	130
BP05-50800-0800-16	50	800	640	135	25	φ 16	M16	229	8	247

*Special Design Welcome !

BP07

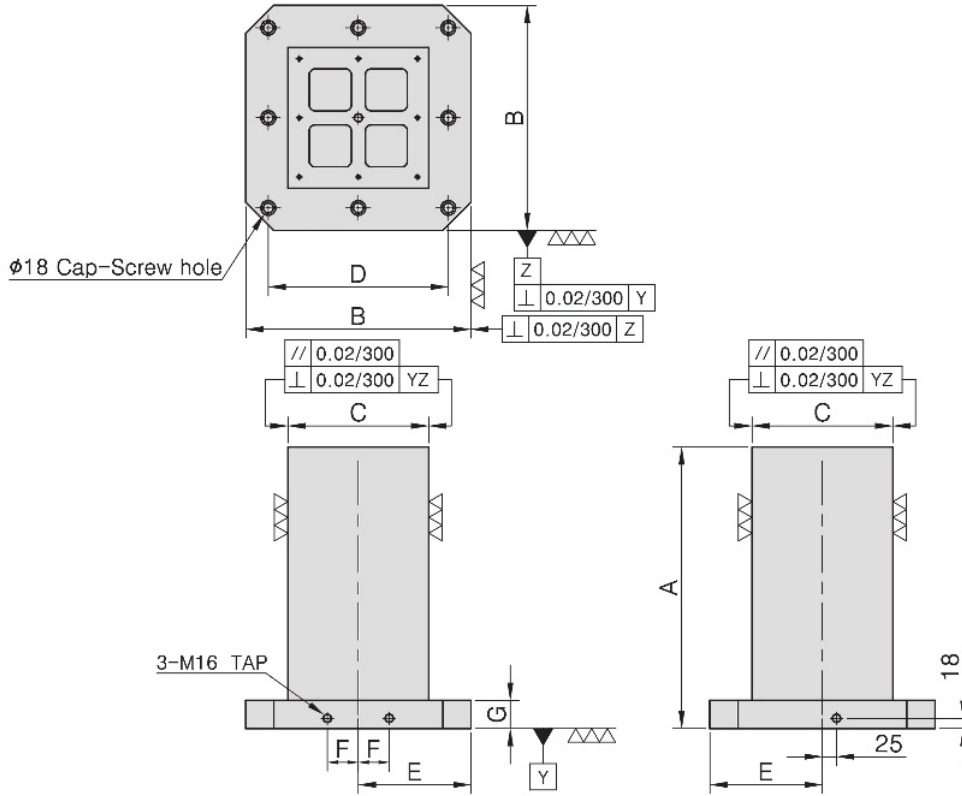
SQUARE TOOLING COLUMN



- Material/Finish:
Material: Cast Iron FC300(JIS) / GG30(DIN)
Heat treated (Normalized)
- Application: Horizontal Machining Center.
- Features: Ready to accept a hole pattern for your special jig.
- Eye bolt & top cover included.

KARE İŞLEME KULESİ

- Malzeme/Finish:
Malzeme: Çelik Döküm FC300 (JIS) / GG30 (DIN)
Normalize edilmiş
- Uygulama : Yatay işleme merkezi
- Özellikler : Özel bağlama aparatlarınız için, bağlama deliklerini isteğe göre delebilme
- Inbus civata ve üst kapak dahil



MODEL NO.	A	B	C	D	E	F	G	No. of Mounting holes	kg
BP07-400400-0500	500	400	250	320	200	55	50	4	153
BP07-500500-0600	600	500	300	400	250	75	50	8	250
BP07-630630-0700	700	630	350	500	315	100	50	8	354
BP07-800800-0800	800	800	500	640	400	135	50	8	593

*Special Design Welcome !

BP08

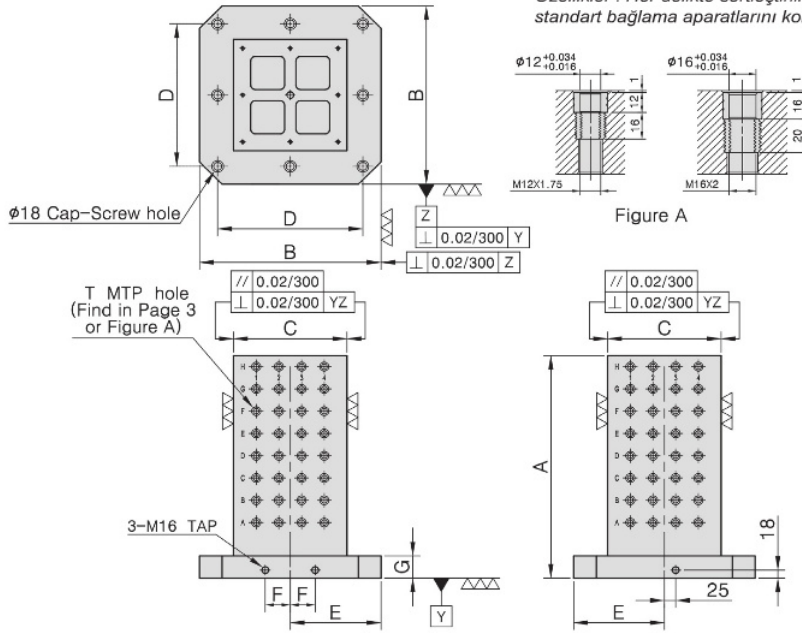


SQUARE TOOLING COLUMN

- Material/Finish:
Material: Cast Iron FC300 (JIS) / GG30 (DIN)
Heat treated (Normalized)
Alignment bushing: SUJ2(JIS) / 100Cr6(DIN), heat treated
Threaded Insert: S45C(JIS) / CK45(DIN), heat treated
MTP hole spacing: 50 ± 0.02
- Application: Horizontal Machining Center.
- Features: Alignment bushing & thread insert at every hole location, easily adapts to standardized jig components.

KARE İŞLEME KULESİ

- Malzeme/Finish:
Malzeme: Çelik Döküm FC300 (JIS) / GG30 (DIN)
Normalize edilmiş
- Merkezleme Burcu : SUJ2 (JIS) / 100Cr6 (DIN), sertleştirilmiş
- Dişler: S45C(JIS) / CK45(DIN), sertleştirilmiş
- MTP Delik Aralıkları : 50 ± 0.02
- Uygulama : Yatay işleme merkezi
- Özellikler : Her delikte sertleştirilmiş merkezleme burçlu&dişli delik, standart bağlama aparatlarını kolayca adapte edebilme



MODEL NO.	A	B	C	D	E	F	G	T	No. of MTP holes	No. of Mounting holes	kg
BP08-400400-0500-12	500	400	250	320	200	55	50	φ 12 M12	128	4	149
BP08-500500-0600-12	600	500	300	400	250	75	50	φ 12 M12	200	8	243
BP08-630630-0700-12	700	630	350	500	315	100	50	φ 12 M12	288	8	346
BP08-800800-0800-12	800	800	500	640	400	135	50	φ 12 M12	504	8	563
BP08-400400-0500-16	500	400	250	320	200	55	50	φ 16 M16	128	4	148
BP08-500500-0600-16	600	500	300	400	250	75	50	φ 16 M16	200	8	234
BP08-630630-0700-16	700	630	350	500	315	100	50	φ 16 M16	288	8	340
BP08-800800-0800-16	800	800	500	640	400	135	50	φ 16 M16	504	8	555

*Special Design Welcome !



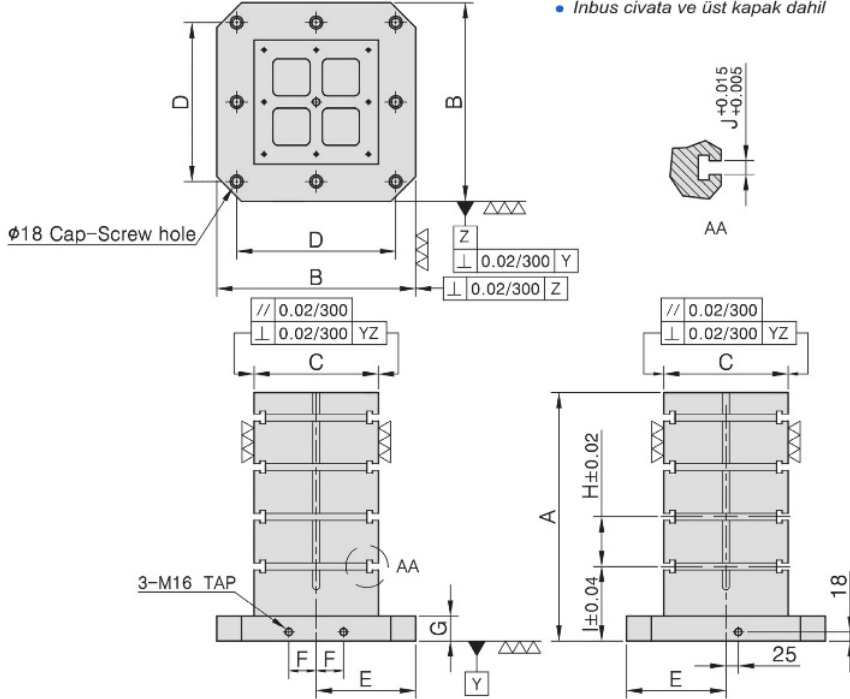
BP09

SQUARE TOOLING COLUMN

- Material/Finish:
Material: Cast Iron FC300(JIS) / GG30(DIN)
Heat treated (Normalized)
- Application: Horizontal Machining Center.
- Features: T-Slots running horizontally, key-way running vertically, easily adapts to standardized jig components.
- Eye bolt & top cover included.

KARE İŞLEME KULESİ

- Malzeme/Finish:
Malzeme: Çelik Döküm FC300 (JIS) / GG30 (DIN)
Normalize edilmiş
- Merkezleme Burcu : SUJ2 (JIS) / 100Cr6 (DIN), sertleştirilmiş
- Uygulama : Yatay işleme merkezi
- Özellikler : Yatay T- Kanallar, dikey merkezleme kanalı, standart bağlama aparatlarını kolayca adapte edebilme
- İnbus civata ve üst kapak dahil



MODEL NO.	A	B	C	D	E	F	G	H	I	J	kg
BP09-400400-0500-14	500	400	250	320	200	55	50	100	150	14	168
BP09-500500-0600-14	600	500	300	400	250	75	50	100	150	14	237
BP09-630630-0700-14	700	630	350	500	315	100	50	125	150	14	375
BP09-800800-0800-14	800	800	500	640	400	135	50	150	150	14	715
BP09-400400-0500-18	500	400	250	320	200	55	50	100	150	18	165
BP09-500500-0600-18	600	500	300	400	250	75	50	100	150	18	233
BP09-630630-0700-18	700	630	350	500	315	100	50	125	150	18	372
BP09-800800-0800-18	800	800	500	640	400	135	50	150	150	18	700

*Special Design Welcome !



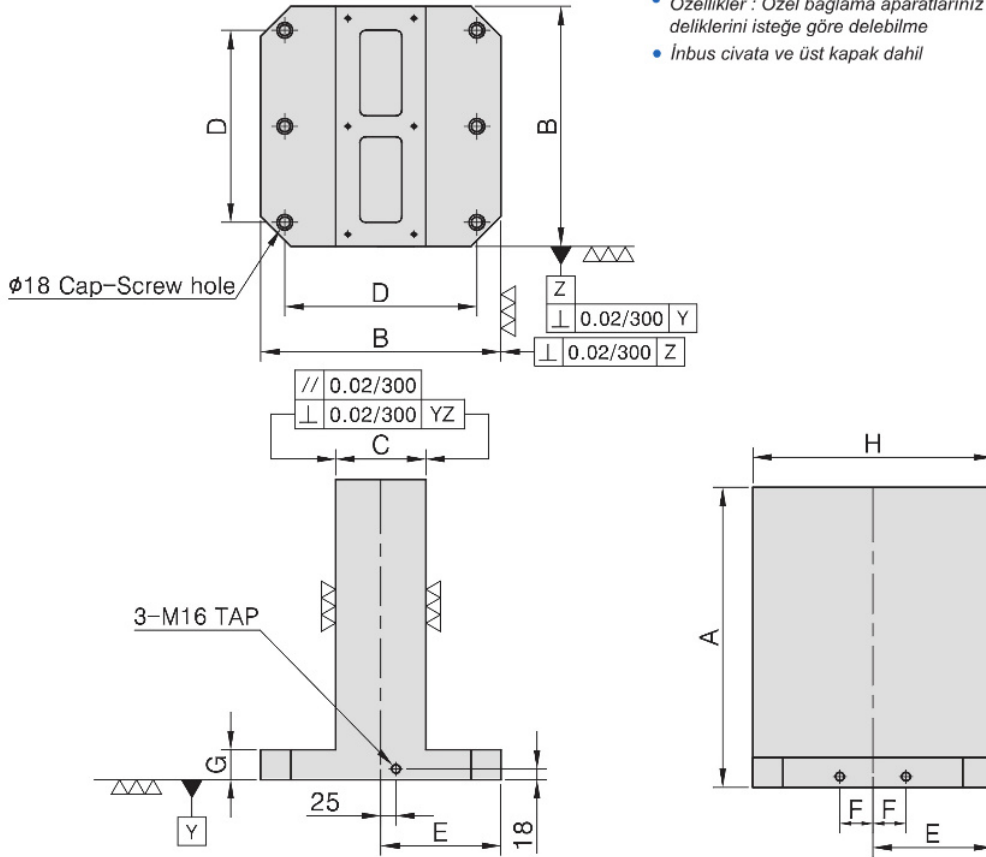
BP10

DOUBLE SIDED TOOLING COLUMN

- Material/Finish:
Material: Cast Iron FC300(JIS) / GG30(DIN)
Heat treated (Normalized)
- Application: Horizontal Machining Center.
- Features: Ready to accept a hole pattern for your special jig.
- Eye bolt & top cover included.

ÇİFT TARAFLI İŞLEME KULESİ

- Malzeme/Finish:
Malzeme: Çelik Döküm FC300 (JIS) / GG30 (DIN)
Normalize edilmiş
- Uygulama : Yatay işleme merkezi
- Özellikler : Özel bağlama aparatlarınız için, bağlama deliklerini isteğe göre delebilmek
- İnbis civata ve üst kapak dahil



MODEL NO.	A	B	C	D	E	F	G	H	No. of Mounting holes	kg
BP10-400400-0500	500	400	150	320	200	55	50	400	4	170
BP10-500500-0600	600	500	200	400	250	75	50	500	6	265
BP10-630630-0700	700	630	250	500	315	100	50	630	6	484
BP10-800800-0800	800	800	300	640	400	135	50	800	6	598

*Special Design Welcome !



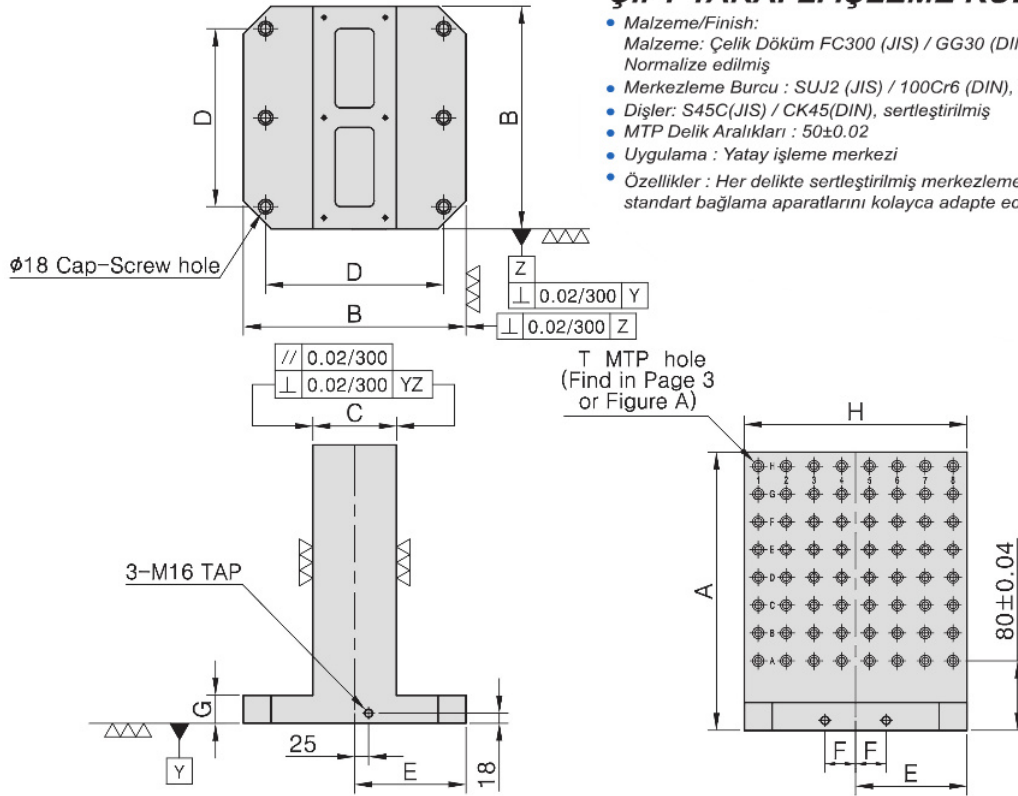
BP11

DOUBLE SIDED TOOLING COLUMN

- Material/Finish:
Material: Cast Iron FC300(JIS) / GG30(DIN)
Heat treated (Normalized)
Alignment Bushing: SUJ2(JIS) / 100Cr6 (DIN), heat treated
Threaded Insert: S45C(JIS) / CK45(DIN), heat treated MTP hole spacing: 50 ± 0.02
- Application: Horizontal Machining Center.
- Features: Alignment bushing & thread insert at every hole location, easily adapts to standardized jig components.

ÇİFT TARAFLI İŞLEME KULESİ

- Malzeme/Finish:
Malzeme: Çelik Döküm FC300 (JIS) / GG30 (DIN)
Normalize edilmiş
- Merkezleme Burcu : SUJ2 (JIS) / 100Cr6 (DIN), sertleştirilmiş
- Dişler: S45C(JIS) / CK45(DIN), sertleştirilmiş
- MTP Delik Aralıkları : 50 ± 0.02
- Uygulama : Yatay işleme merkezi
- Özellikler : Her delikte sertleştirilmiş merkezleme burçlu & dişli delik, standart bağlama aparatlarını kolayca adapte edebilme



MODEL NO.	A	B	C	D	E	F	G	H	T	No. of MTP holes	No. of Mounting holes	kg
BP11-400400-0500-12	500	400	150	320	200	55	50	400	φ 12 M12	128	4	155
BP11-500500-0600-12	600	500	200	400	250	75	50	500	φ 12 M12	200	6	250
BP11-630630-0700-12	700	630	250	500	315	100	50	630	φ 12 M12	288	6	425
BP11-800800-0800-12	800	800	300	640	400	135	50	800	φ 12 M12	448	6	590
BP11-400400-0500-16	500	400	150	320	200	55	50	400	φ 16 M16	128	4	164
BP11-500500-0600-16	600	500	200	400	250	75	50	500	φ 16 M16	200	6	248
BP11-630630-0700-16	700	630	250	500	315	100	50	630	φ 16 M16	288	6	470
BP11-800800-0800-16	800	800	300	640	400	135	50	800	φ 16 M16	448	6	580

*Special Design Welcome !



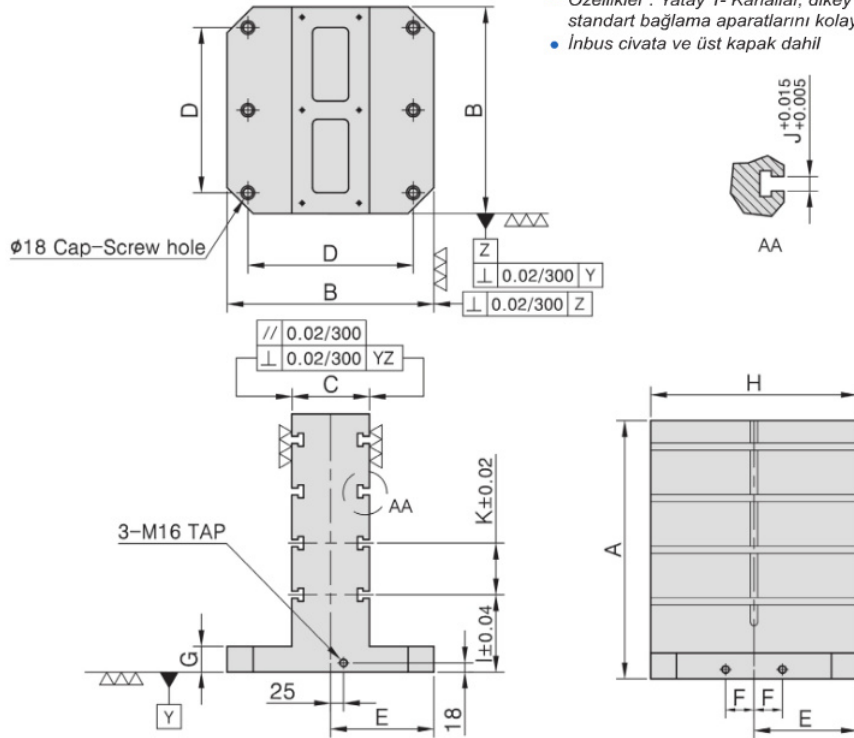
BP12

DOUBLE SIDED TOOLING COLUMN

- Material/Finish:
Material: Cast Iron FC300(JIS) / GG30(DIN)
Heat treated (Normalized)
- Application: Horizontal Machining Center.
- Features: T-Slots running horizontally, key-way running vertically, easily adapts to standardized jig components.
- Eye bolt & top cover included.

ÇİFT TARAFLI İŞLEME KULESİ

- Malzeme/Finish:
Malzeme: Çelik Döküm FC300 (JIS) / GG30 (DIN)
Normalize edilmiş
- Merkezleme Burcu : SUJ2 (JIS) / 100Cr6 (DIN), sertleştirilmiş
- Uygulama : Yatay işleme merkezi
- Özellikler : Yatay T- Kanallar, dikey merkezleme kanalı, standart bağlama aparatlarını kolayca adapte edebilme
- İnbus civata ve üst kapak dahil



MODEL NO.	A	B	C	D	E	F	G	H	I	J	K	kg
BP12-400400-0500-14	500	400	150	320	200	55	50	400	150	14	100	165
BP12-500500-0600-14	600	500	200	400	250	75	50	500	150	14	100	240
BP12-630630-0700-14	700	630	250	500	315	100	50	630	150	14	125	455
BP12-800800-0800-14	800	800	300	640	400	135	50	800	150	14	150	670
BP12-400400-0500-18	500	400	150	320	200	55	50	400	150	18	100	164
BP12-500500-0600-18	600	500	200	400	250	75	50	500	150	18	100	238
BP12-630630-0700-18	700	630	250	500	315	100	50	630	150	18	125	450
BP12-800800-0800-18	800	800	300	640	400	135	50	800	150	18	150	660

*Special Design Welcome !



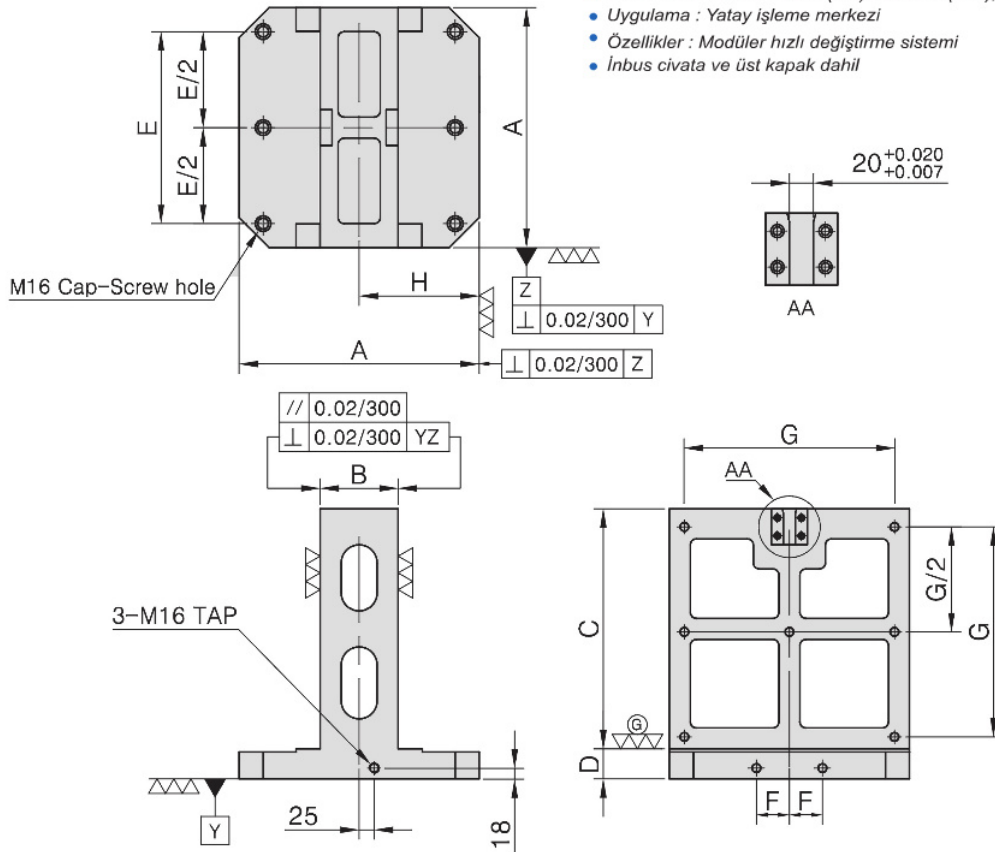
BP13

MODULAR TOOLING COLUMN

- Material/Finish:
Material: Cast Iron FC300(JIS) / GG30(DIN)
Heat treated (Normalized)
- Application: Horizontal Machining Center.
- Features: Modular quick-change system, simple 3 point mounting , use with BP14 & BP15 subplates.
- Eye bolt & top cover included.

MODÜLER İŞLEME KULESİ

- Malzeme/Finish:
Malzeme: Çelik Döküm FC300 (JIS) / GG30 (DIN)
Normalize edilmiş
- Merkezleme Burcu : SUJ2 (JIS) / 100Cr6 (DIN), sertleştirilmiş
- Uygulama : Yatay işleme merkezi
- Özellikler : Modüler hızlı değiştirme sistemi
- İbus civata ve üst kapak dahil

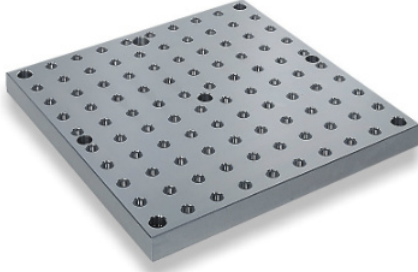


MODEL NO.	A	B	C	D	E	F	G	H	No. of Mounting holes	kg
BP13-400400-0450	400	130	400	50	320	55	350	200	5	121
BP13-500500-0555	500	150	500	55	400	75	450	250	7	215
BP13-630630-0690	630	220	630	60	500	100	580	315	7	355
BP13-800800-0860	800	250	800	60	640	135	750	400	7	500

*Special Design Welcome !

BP15

SUB-PLATE



- Material/Finish:
Material: Cast Iron FC300(JIS) / GG30(DIN)
Heat treated (Normalized)
Alignment Bushing: SUJ2(JIS) / 100Cr6 (DIN), heat treated
Threaded Insert: S45C(JIS) / CK45(DIN), heat treated MTP hole spacing: 50 ± 0.02
- Application: Modular quick change subplate, use with BP13.
- Features: Alignment bushing & thread insert at every hole location, easily adapts to standardized jig components.

M / C TABLA

- Malzeme/Finish:
Malzeme: Çelik Döküm FC300 (JIS) / GG30 (DIN)
Normalize edilmiş
- Merkezleme Burcu : SUJ2 (JIS) / 100Cr6 (DIN), sertleştirilmiş
- Uygulama : Modüler hızlı söküp takmalı tabla, B13 ile kullanılır.
- Özellikler : Her delik içinde sertleştirilmiş malzeme burcuve dişli burc mevcuttur.
Standart bağlama aparatlarını kolayca adapte edebilme
- Civata ve üst kapak dahil

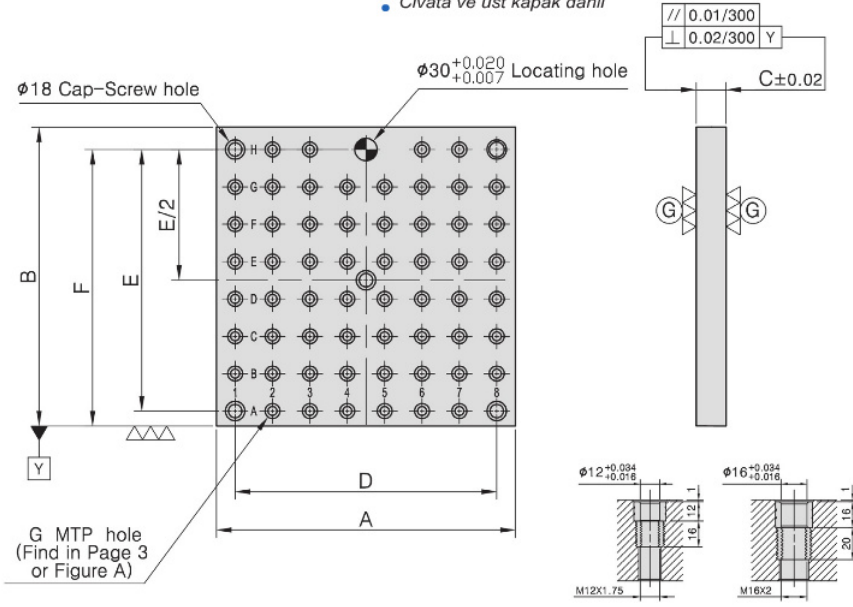
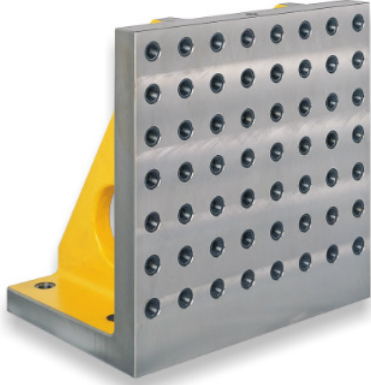


Figure A

MODEL NO.	A	B	C	D	E	F	G	No. of MTP holes	No. of Mounting holes	kg	
BP15-40400-0400-12	400	400	40	350	350	370	φ 12	M12	58	5	42
BP15-40500-0500-12	500	500	40	450	450	470	φ 12	M12	90	7	75
BP15-40630-0630-12	630	630	40	580	580	600	φ 12	M12	140	7	108
BP15-50800-0800-12	800	800	50	750	750	770	φ 12	M12	246	7	240
BP15-40400-0400-16	400	400	40	350	350	370	φ 16	M16	58	5	37
BP15-40500-0500-16	500	500	40	450	450	470	φ 16	M16	90	7	73
BP15-40630-0630-16	630	630	40	580	580	600	φ 16	M16	140	7	118
BP15-50800-0800-16	800	800	50	750	750	770	φ 16	M16	246	7	235

*Special Design Welcome !



BP21

M/C ANGLE PLATE

- Material/Finish:
Material: Cast Iron FC300(JIS) / GG30(DIN)
Heat treated (Normalized)
Alignment Bushing: SUJ2(JIS) / 100Cr6(DIN), heat treated
Threaded Insert: S45C(JIS) / CK45(DIN), heat treated
MTP hole spacing: 50 ± 0.02
- Application: HMC/VMC.
- Features: Alignment bushing & thread insert at every hole location, easily adapts to standardized jig components.

M / C AÇILI TABLA

- Malzeme/Finish:
Malzeme: Çelik Döküm FC300 (JIS) / GG30 (DIN)
Normalizasyon edilmiş
- Merkezleme Burcu : SUJ2 (JIS) / 100Cr6 (DIN), sertleştirilmiş
- Dişler: S45C(JIS) / CK45(DIN), sertleştirilmiş
- MTP Delik Aralıkları : 50 ± 0.02
- Uygulama : Yatay ve dikey işleme merkezi
- Özellikler : Her delikte sertleştirilmiş merkezleme burçlu&dişli delik, standart bağlama aparatlarını kolayca adapte edebilme

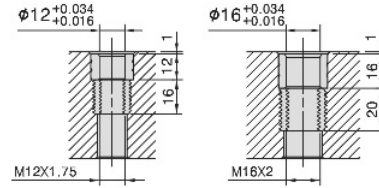
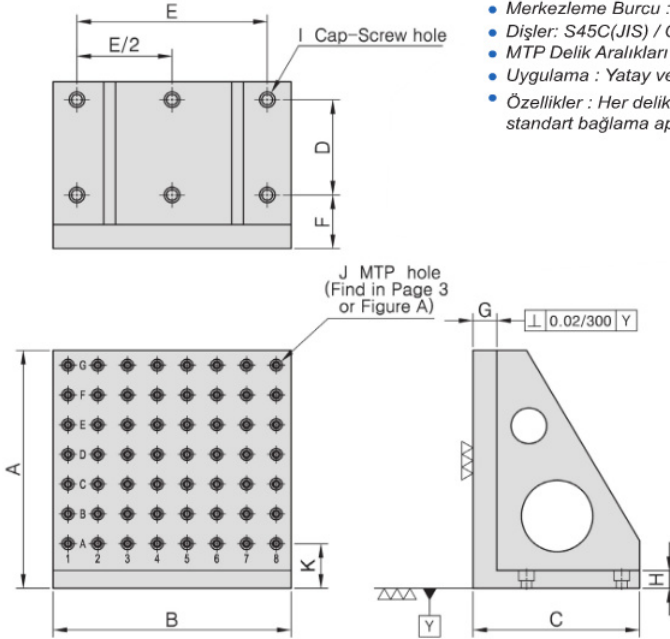


Figure A

MODEL NO.	A	B	C	D	E	F	G	H	I	J	K	No. of MTP holes	No. of Mounting holes	kg	
BP21-220300-0300-12	300	300	220	100	250	90	40	30	$\phi 18$	$\phi 12$	M12	75	30	6	50
BP21-280400-0400-12	400	400	280	160	320	90	40	30	$\phi 18$	$\phi 12$	M12	75	56	6	87
BP21-340500-0500-12	500	500	345	200	400	90	50	35	$\phi 18$	$\phi 12$	M12	75	90	6	173
BP21-435630-0630-12	630	630	435	250	500	100	50	40	$\phi 18$	$\phi 12$	M12	40	144	6	300
BP21-525800-0800-12	800	800	525	320	640	115	50	45	$\phi 18$	$\phi 12$	M12	75	240	6	477
BP21-220300-0300-16	300	300	220	100	250	90	40	30	$\phi 18$	$\phi 16$	M16	75	30	6	46
BP21-280400-0400-16	400	400	280	160	320	90	40	30	$\phi 18$	$\phi 16$	M16	75	56	6	85
BP21-340500-0500-16	500	500	345	200	400	90	50	35	$\phi 18$	$\phi 16$	M16	75	90	6	170
BP21-435630-0630-16	630	630	435	250	500	100	50	40	$\phi 18$	$\phi 16$	M16	40	144	6	295
BP21-525800-0800-16	800	800	525	320	640	115	50	45	$\phi 18$	$\phi 16$	M16	75	240	6	470

*Special Design Welcome !

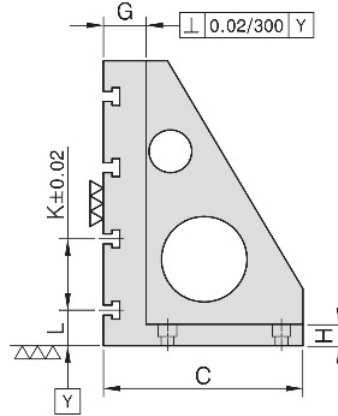
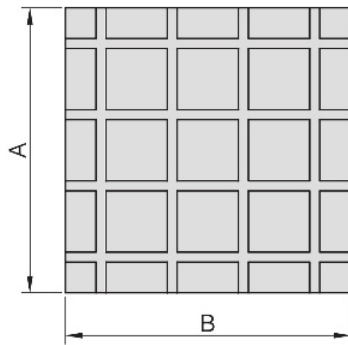
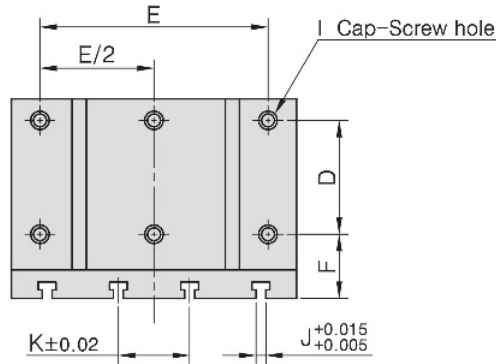
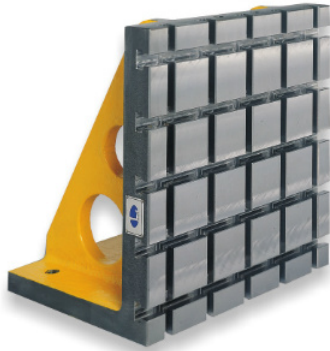
BP22

M/C ANGLE PLATE

- Material/Finish:
Material: Cast Iron FC300(JIS) / GG30(DIN)
Heat treated (Normalized)
- Application: HMC/VMC.
- Features: T-Slots running in 2 directions, easily adapts to standardized jig components.

M / C AÇILI TABLA

- Malzeme/Finish:
Malzeme: Çelik Döküm FC300 (JIS) / GG30 (DIN)
Normalize edilmiş
- Uygulama : Yatay ve dikey işleme merkezi
- Özellikler : İki yöne hareketli T-kanalları standart bağlama aparatlarını kolayca adapte edebilme



MODEL NO.	A	B	C	D	E	F	G	H	I	J	K	L	kg
BP22-220300-0300-14	300	300	220	100	250	90	60	30	φ 18	14	100	50	52
BP22-300400-0400-14	400	400	300	160	320	90	60	30	φ 18	14	100	50	101
BP22-350500-0500-14	500	500	350	200	400	90	60	35	φ 18	14	100	50	184
BP22-450630-0630-14	630	630	450	250	500	100	65	40	φ 18	14	125	65	316
BP22-550800-0800-14	800	800	550	320	640	115	75	45	φ 18	14	150	100	566
BP22-220300-0300-18	300	300	220	100	250	90	60	30	φ 18	18	100	50	51
BP22-300400-0400-18	400	400	300	160	320	90	60	30	φ 18	18	100	50	101
BP22-350500-0500-18	500	500	350	200	400	90	60	35	φ 18	18	100	50	175
BP22-450630-0630-18	630	630	450	250	500	100	65	40	φ 18	18	125	65	285
BP22-550800-0800-18	800	800	550	320	640	115	75	45	φ 18	18	150	100	543

*Special Design Welcome !



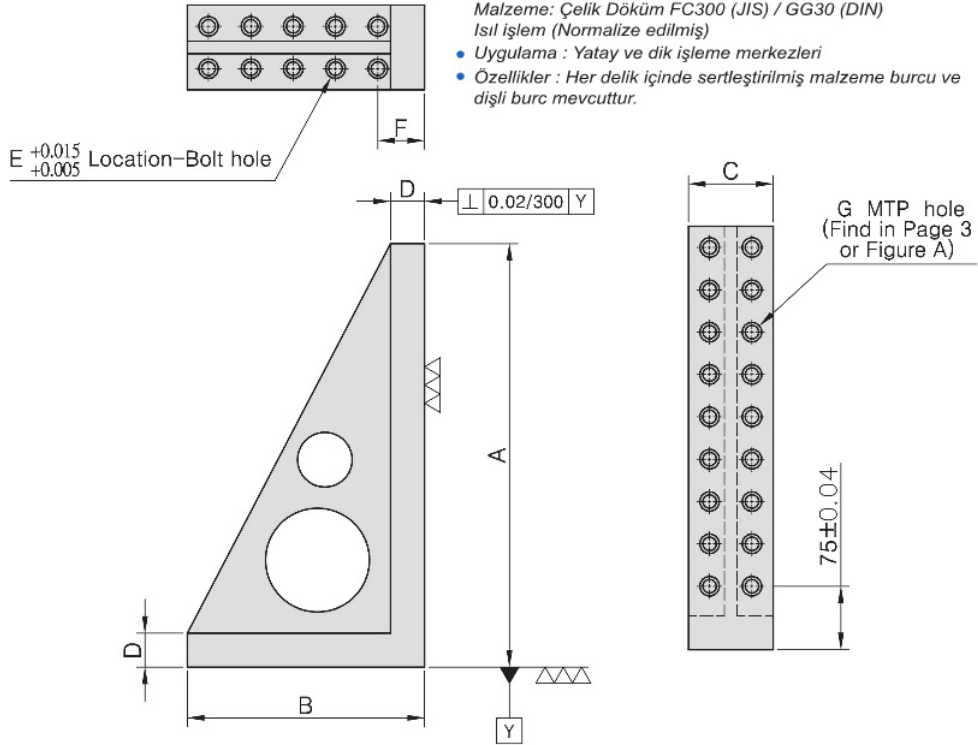
BP24

MC NARROW ANGLE PLATE

- Material/Finish: Material: Cast Iron FC300(JIS) / GG30(DIN)
Heat treated (Normalized)
- Application: HMC/VMC.
- Features: Alignment bushing & thread insert at every hole location, easily adapts to standardized jig components.

M / C AÇILI GÖNYE

- Malzeme/Finish: Malzeme: Çelik Döküm FC300 (JIS) / GG30 (DIN)
Isıl işlem (Normalize edilmiş)
- Uygulama : Yatay ve dikey işleme merkezleri
- Özellikler : Her delik içinde sertleştirilmiş malzeme burcu ve dişli burc mevcuttur.



MODEL NO.	A	B	C	D	E	F	G	No. of MTP holes	No. of Mounting holes	kg
BP24-180100-0300-12	300	180	100	40	φ 12	55	φ 12	10	6	12
BP24-230100-0400-12	400	230	100	40	φ 12	55	φ 12	14	8	18
BP24-280100-0500-12	500	280	100	40	φ 12	55	φ 12	18	10	22
BP24-180100-0300-16	300	180	100	40	φ 16	55	φ 16	10	6	13
BP24-230100-0400-16	400	230	100	40	φ 16	55	φ 16	14	8	19
BP24-280100-0500-16	500	280	100	40	φ 16	55	φ 16	18	10	24

*Special Design Welcome !

CP14A



CP14B



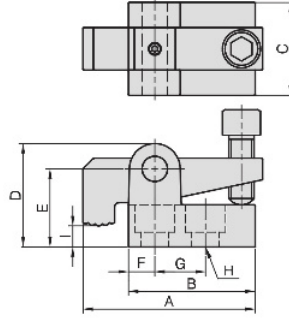
CP14C



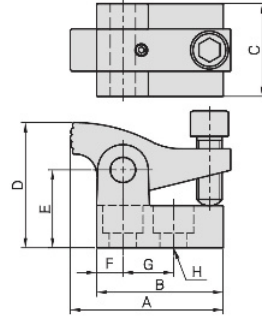
- Material/Finish:
Material: S45C(JIS) / CK45(DIN),
heat treated to HRC 32°~38°.
Surface finish: Black Oxide.
- Application: Clamp that is well suited for castings and odd shaped workpieces. Pivoting nose has a serrated jaw that clamps forward and downward simultaneously.
- Malzeme/Finish:
- Malzeme : S45C(JIS) / CK45(DIN), sertlik 32° ~ 38° HRC.
- Uygulama : Döküm ve şekilsiz parça sıkmalara çok uygun. Dişli çene sayesinde öne ve aşağıya doğru aynı anda sıkılabilir.

CP14

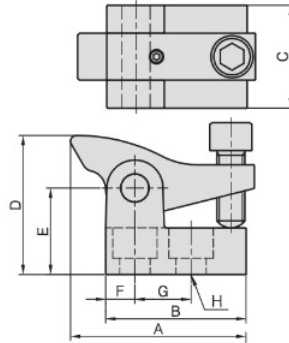
PIVOTING SIDE CLAMP EKSENEL HAREKETLİ YAN SIKMA PAPUCU



MODEL NO.	A	B	C	D	E	F	G	H	I	kg
CP14A-126045	85	60	45	50	37	12.5	24	φ 13	5-15	0.78
CP14A-169068	125	90	68	65	47	18	36	φ 18	5-15	2.26



MODEL NO.	A	B	C	D	E	F	G	H	I	kg
CP14B-126045	75	60	45	65	37	12.5	24	φ 13		0.73
CP14B-169068	110	90	68	88	47	18	36	φ 18		2.20



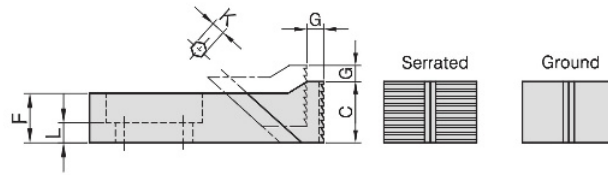
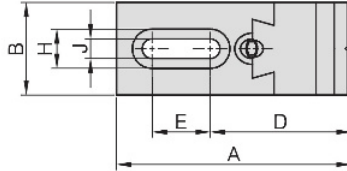
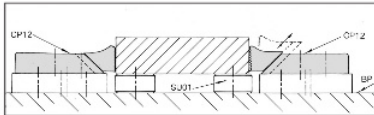
MODEL NO.	A	B	C	D	E	F	G	H	I	kg
CP14C-126045	75	60	45	60	37	12.5	24	φ 13		0.73
CP14C-169068	115	90	68	83	47	18	36	φ 18		2.12

CP12

ADJUSTABLE SIDE CLAMP



- Material/Finish:
Material: S45C(JIS) / CK45(DIN), heat treated to HRC 38°. Jaw Surface treated with high frequency quenching.
Surface finish: Black Oxide.
- Application: Low profile side clamp keeps top surfaces clear for machining, ideal for rough or finished parts, available with plain or serrated jaw.



MODEL NO.	A	B	C	D	E	F	G	H	J	K	L	Type	kg
CP12-0825-S	72	25	20	45	16.5	16	7	14	8.5	5	7	Serrated	0.18
CP12-1235-S	105	35	30	65	30	22	12	20	13.5	6	9		0.52
CP12-1640-S	138	40	40	90	35	30	14	26	17.0	8	13		1.02
CP12-0825-G	72	25	20	45	16.5	16	7	14	8.5	5	7	Ground	0.18
CP12-1235-G	105	35	30	65	30	22	12	20	13.5	6	9		0.52
CP12-1640-G	138	40	40	90	35	30	14	26	17.0	8	13		1.02

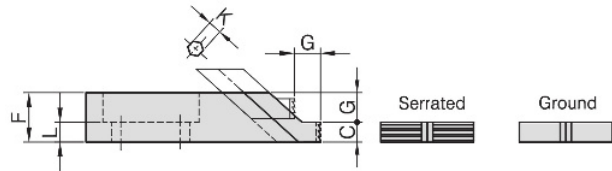
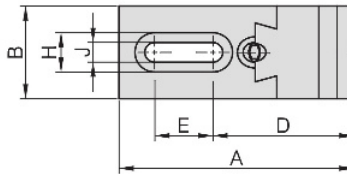
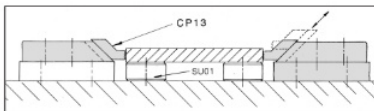
CP13

ADJUSTABLE EDGE CLAMP

AYARLANABİLİR YAN SIKMA MENGENESİ



- Material/Finish:
Material: S45C(JIS) / CK45(DIN), heat treated to HRC 38°. Jaw Surface treated with high frequency quenching.
Surface finish: Black Oxide.
- Application: Low profile side clamp is ideal for holding thin parts and keeps top surfaces clear for machining.



- Malzeme/Finish:
Malzeme : S45C(JIS) / CK45(DIN), sertlik 38° HRC.
- Uygulama : Lama yan sikma mengenesi kaba ve son paso işleminde rahat hareket olanağı sağlar, düz ve dişli çeneler mevcuttur.

MODEL NO.	A	B	C	D	E	F	G	H	J	K	L	Type	kg
CP13-0825-S	72	25	8	45	16.5	16	7	14	8.5	5	7	Serrated	0.150
CP13-1235-S	105	35	10	65	30	22	12	20	13.5	6	9		0.455
CP13-1640-S	138	40	14	90	35	30	14	26	17.0	8	13		0.880
CP13-0825-G	72	25	8	45	16.5	16	7	14	8.5	5	7	Ground	0.150
CP13-1235-G	105	35	10	65	30	22	12	20	13.5	6	9		0.455
CP13-1640-G	138	40	14	90	35	30	14	26	17.0	8	13		0.880

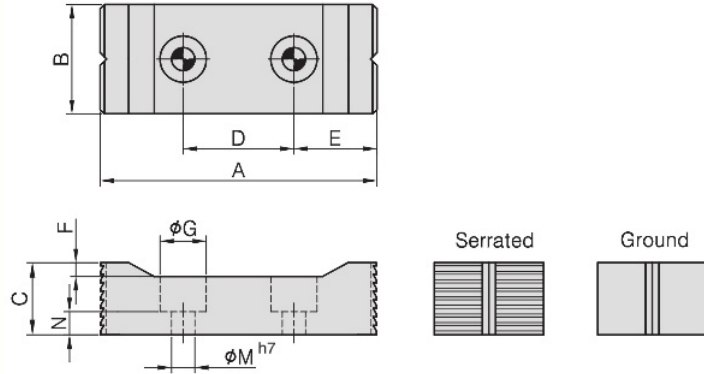
CP29

BLOCK STOP / DAYAMA BLOĞU



- Material/Finish:
Material: S45C, heat treated to HRC 32°~38°.
Surface finish: Black Oxide.
- Application: used with CP12.

- Malzeme/Finish:
Malzeme: S45C
Sertlik: 32°~38° HRC
Yüzey kaplama: Siyah oksit
- Uygulama: Cp12 ile kullanılır.



MODEL NO.	A	B	C	D	E	F	G	M	N	kg	TYPE
CP29-12100-S	100	35	30	40	30	8	20	12	11	0.59	Serrated
CP29-16130-S	130	40	40	50	40	10	26	16	14	1.20	
CP29-12100-G	100	35	30	40	30	8	20	12	11	0.59	Ground
CP29-16130-G	130	40	40	50	40	10	26	16	14	1.20	

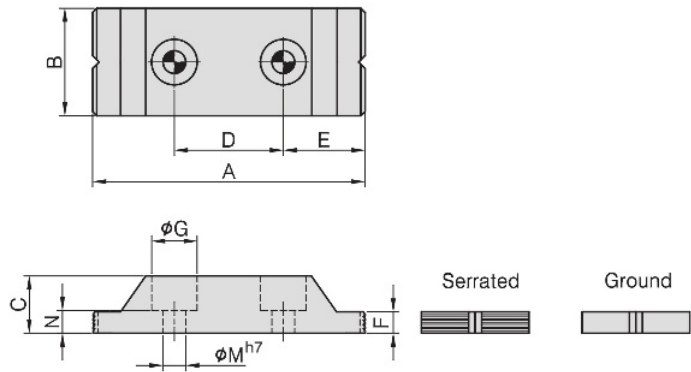
CP30

THIN BLOCK STOP / İNCE DAYAMA BLOĞU



- Material/Finish:
Material: S45C, heat treated to HRC 32°~38°.
Surface finish: Black Oxide.
- Application: used with CP13.

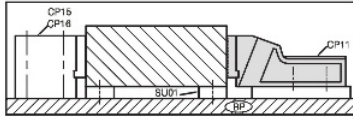
- Malzeme/Finish:
Malzeme : S45C(JIS) / CK45(DIN), sertlik 38° HRC.
- Uygulama : Lama yan sıkma mengenesi kaba ve son paso işleminde rahat hareket olanağı sağlar, düz ve dişli çeneler mevcuttur.



MODEL NO.	A	B	C	D	E	F	G	M	N	kg	TYPE
CP30-12100-S	100	35	22	40	30	10	20	12	11	0.46	Serrated
CP30-16130-S	130	40	30	50	40	14	26	16	14	0.88	
CP30-12100-G	100	35	22	40	30	10	20	12	11	0.46	Ground
CP30-16130-G	130	40	30	50	40	14	26	16	14	0.88	



- Material/Finish:
Material: FCD 45(JIS),
heat treated (normalized).
- Application: Ideal for holding large or
irregular shapes.
- Features: Clamping force in 2 direcciors,
available with plain or serrated jaws.

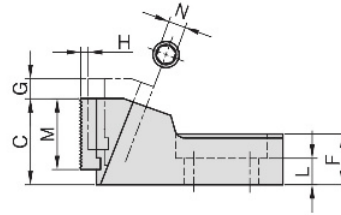
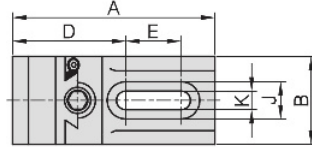
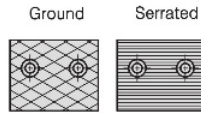


CP11

FREE JAW VISE

SERBEST ÇENELİ MENGENE

- Malzeme/Finish:
- Malzeme : FCD 45 (JIS),
normalize edilmiş
- Uygulama : Geniş ve şekilsiz
parçaları tutmak için ideal
- Özellikler : İki şekilli sıkma, düz veya
dişli çeneli olarak mevcut



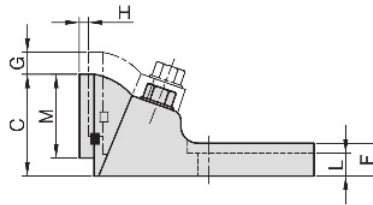
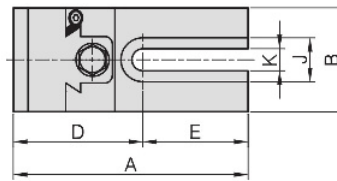
MODEL NO.	A	B	C	D	E	F	G	H	J	K	L	M	N	Type	Δ kg
CP11-1260-S	133	60	58	68	50	32	16	6	22	13.5	18	42	10	Serrated	2.1
CP11-1685-S	187	85	80	92	70	45	24	9	30	17	25	60	14	Serrated	5.6
CP11-1260-G	133	60	58	68	50	32	16	6	22	13.5	18	42	10	Ground	2.1
CP11-1685-G	187	85	80	92	70	45	24	9	30	17	25	60	14	Ground	5.6

CP23

FREE VISE



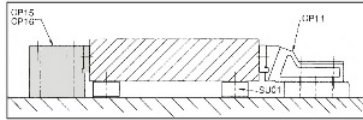
- Material Heat Treated and surface to be
treated with Black Oxide.
- Malzeme Isıl işlemden geçmiş ve
yüzeyi siyah oksit ile kaplanmıştır.



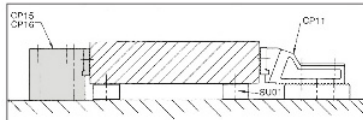
MODEL NO.	A	B	C	D	E	F	G	H	J	K	L	M	N	Δ kg
CP23-12140	140	70	70	85	55	25	15	5	29	16	19	60	6.30	
CP23-16195	195	85	85	105	90	30	20	7	37	17	24	70	11.0	
CP23-20220	220	110	107	120	100	35	25	9	42	21	26	85	21.0	



- Material/Finish:
Material: body ==>S45C(JIS) / CK45(DIN), heat treated to HRC 32°. jaw==>YK30(JIS) / C105W1(DIN), heat treated to HRC 58°. Surface finish: Black Oxide.
- Application: Serrated stop is used with CP11 free vise. Useful for holding rough parts and where heavy clamping is needed.
- Uygulama : CP11 mengene ile kullanılır kaba parçaları tutmakta ve ağır sıkıştırma gerektiğinde çok kullanışlıdır.



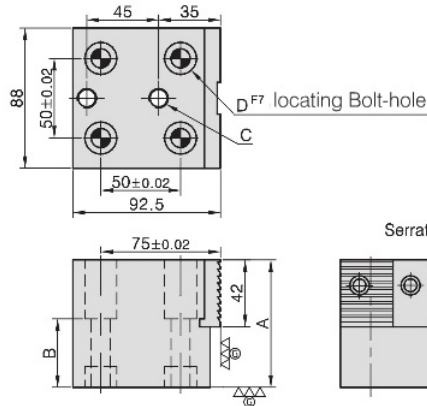
- Material/Finish:
Material: body ==>S45C(JIS) / CK45(DIN), heat treated to HRC 32°. jaw==>YK30(JIS) / C105W1(DIN), heat treated to HRC 58°. Surface finish: Black Oxide.
- Application: Smooth stop is used with CP11 free vise. Useful for holding finished parts.
- Uygulama : CP11 mengene ile kullanılır son işlem parçalarını tutmakta çok kullanışlıdır.



CP15

SERRATED BLOCK STOP

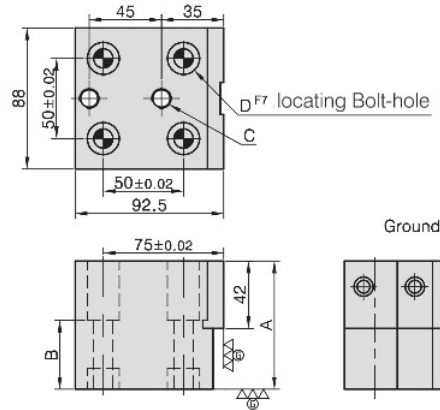
DİŞLİ STOP BLOĞU



MODEL NO.	A	B	C	D	kg
CP15-1265	65	43	M12	φ 12	3.52
CP15-1280	80	43	M12	φ 12	4.22
CP15-1665	65	38	M16	φ 16	3.24
CP15-1680	80	38	M16	φ 16	3.78

CP16

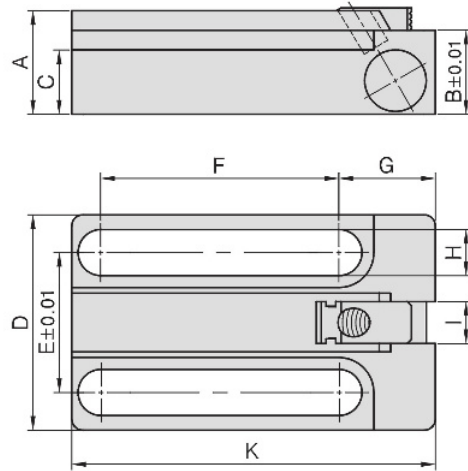
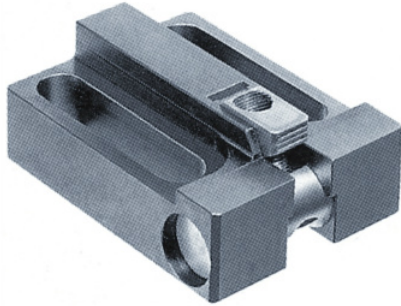
SMOOTH BLOCK STOP



MODEL NO.	A	B	C	D	kg
CP16-1265	65	43	M12	φ 12	3.54
CP16-1280	80	43	M12	φ 12	4.22
CP16-1665	65	38	M16	φ 16	3.28
CP16-1680	80	38	M16	φ 16	3.78

CP31

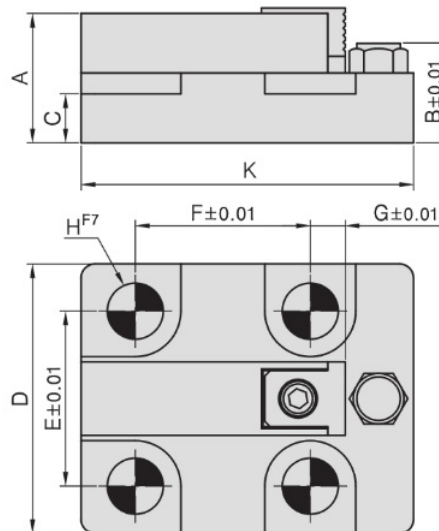
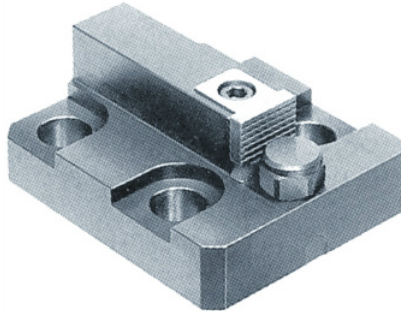
CLAMPING PARTS / SIKMA APARATLARI



MODEL NO.	A	B	C	D	E	F	G	H	I	K	L	kg
CP31-1240	37	30	23	67	40	80	33	13	15	125	21	1.36
CP31-1250	37	30	23	77	50	85	33	13	15	130	21	1.71
CP31-1650	37	30	23	77	50	85	34.5	16.5	15	130	21	1.54

CP32

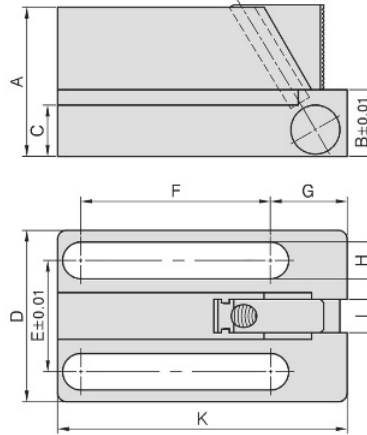
CLAMPING PARTS / SIKMA APARATLARI



MODEL NO.	A	B	C	D	E	F	G	H	K	kg
CP32-1240	37	30	20	67	40	40	10	φ 12	80	0.86
CP32-1250	37	30	20	77	50	50	10	φ 12	95	1.19
CP32-1650	37	30	20	77	50	50	10	φ 16	95	1.14

CP33

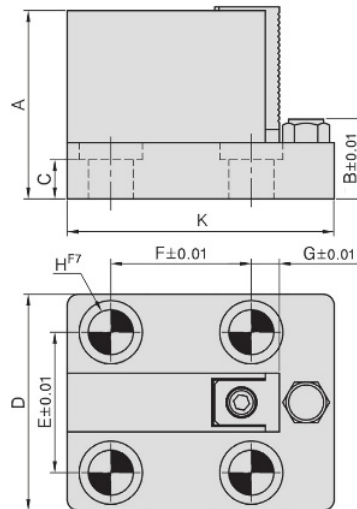
CLAMPING PARTS / SIKMA APARATLARI



MODEL NO.	A	B	C	D	E	F	G	H	I	K	kg
CP33-1240	67	30	30	67	40	80	33	13	15	125	2.02
CP33-1250	67	30	30	77	50	85	33	13	15	130	2.45
CP33-1650	67	30	30	77	50	85	34.5	16.5	15	130	2.25

CP34

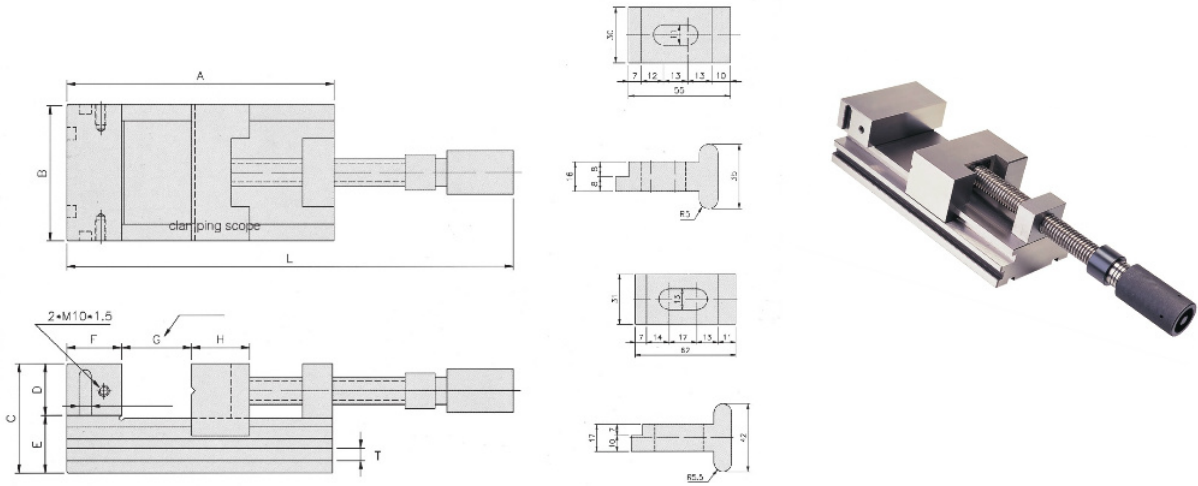
BLOCK STOP / DAYAMA BLOĞU



MODEL NO.	A	B	C	D	E	F	G	H	K	kg
CP34-1240	67	30	20	67	40	40	10	φ12	80	1.24
CP34-1250	67	30	20	77	50	50	10	φ12	95	1.60
CP34-1650	67	30	20	77	50	50	10	φ16	95	1.52

PGV PRECISION HYDRAULIC VISE HASSAS HİDROLİK MENGENE

- Super precision: Parallelism : ± 0.003 m/m.
perpendicularity : ± 0.005 m/m.
- Hardness: HRC 58°~60°.
- Application: Multifunction tool makers vise,
ideally suited for: inspection, grinding or edm work.
- Süper hassasiyet: Paralellik: $\pm 0,003$ m/m
Diklik: $\pm 0,005$ m/m
- Sertlik : HRC 58 °~ 60°
- Uygulama: Çok yönlü takım mengeleri, kontrol,
taşıma ve tel erazyon kullanımlarında idealdir.



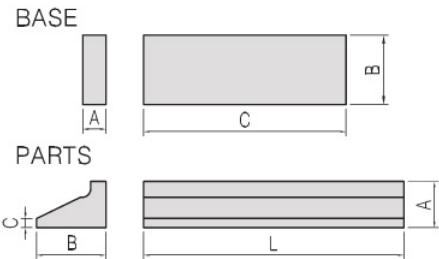
Model No.	A	B	C	D	E	F	G	H	L		T	kg
									MIN	MAX		
PGV-100	220	100	80	40	40	40	125	50	355	470	9 X 7	10
PGV-125	300	125	90	40	50	60	165	70	420	590	11 X 7	19.5

GP-102

GROUND PARALLEL SET / PARALLEL SET



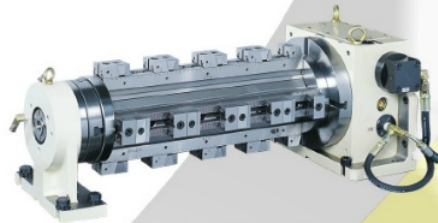
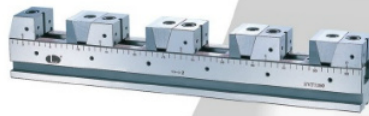
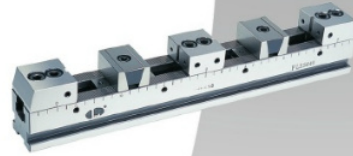
- Material: S45C(JIS) / CK45(DIN)
- Hardness: HRC 45°.
- Accuracy: W x H ± 0.01 m/m
L ± 0.5 m/m
- Malzeme : S45C(JIS) / CK45 (DIN)
- Sertlik : 45 ° HRC
- Paralellik : A x B : ± 0.01 m/m
C/L : ± 0.5 m/m



Model No.	BASE SIZE			PARTS SIZE				kg (1)
	A	B	C	A	B	C	L	
GP100-06	6	18	100	-	-	-	-	1 SET/11.6
GP100-08	8	24	100	-	-	-	-	
GP100-10	10	30	100	-	-	-	-	
GP100-12	12	36	100	-	-	-	-	
GP100-14	14	48	150	-	-	-	-	
GP100-16	16	52	150	-	-	-	-	
GP100-18	18	60	150	-	-	-	-	
GP100-22	22	62	150	-	-	-	-	
GP100-24				16	24	3	200	



SVF SERİSİ
SVF SERIES



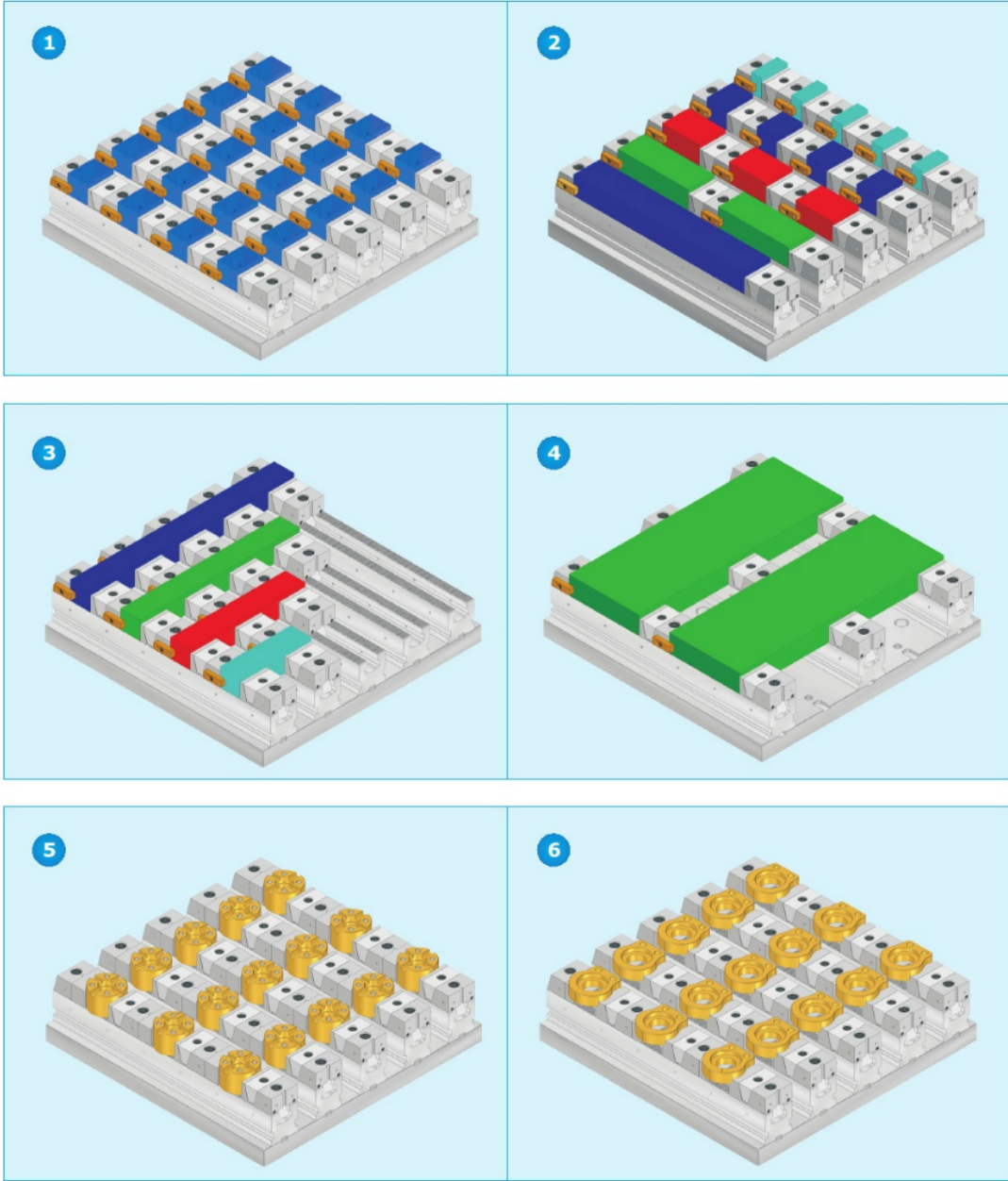
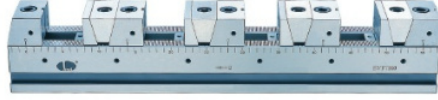
INDEXING TABLE
M7C OCTAGONAL CUBE
FLEXIBLE LINE UP VISE SERIES

6.00066562162.562465523644866254.00005556556266.00000562162
2162.562465523644866254.00005556556266.00000562162
0066562162.562465523644866254.00005556556266.00000562162.56
4866254.00005556556266.00066562162.562465523644866254.00005556556266.00000562162
5556556266.00066562162.562465523644866254.00005556556266.00000562162
254.00000562162.562465523644866254.00005556556266.00000562162

SVF-A One Direction Clamping / Tek Yüzlü Sıkma

Clamping Examples

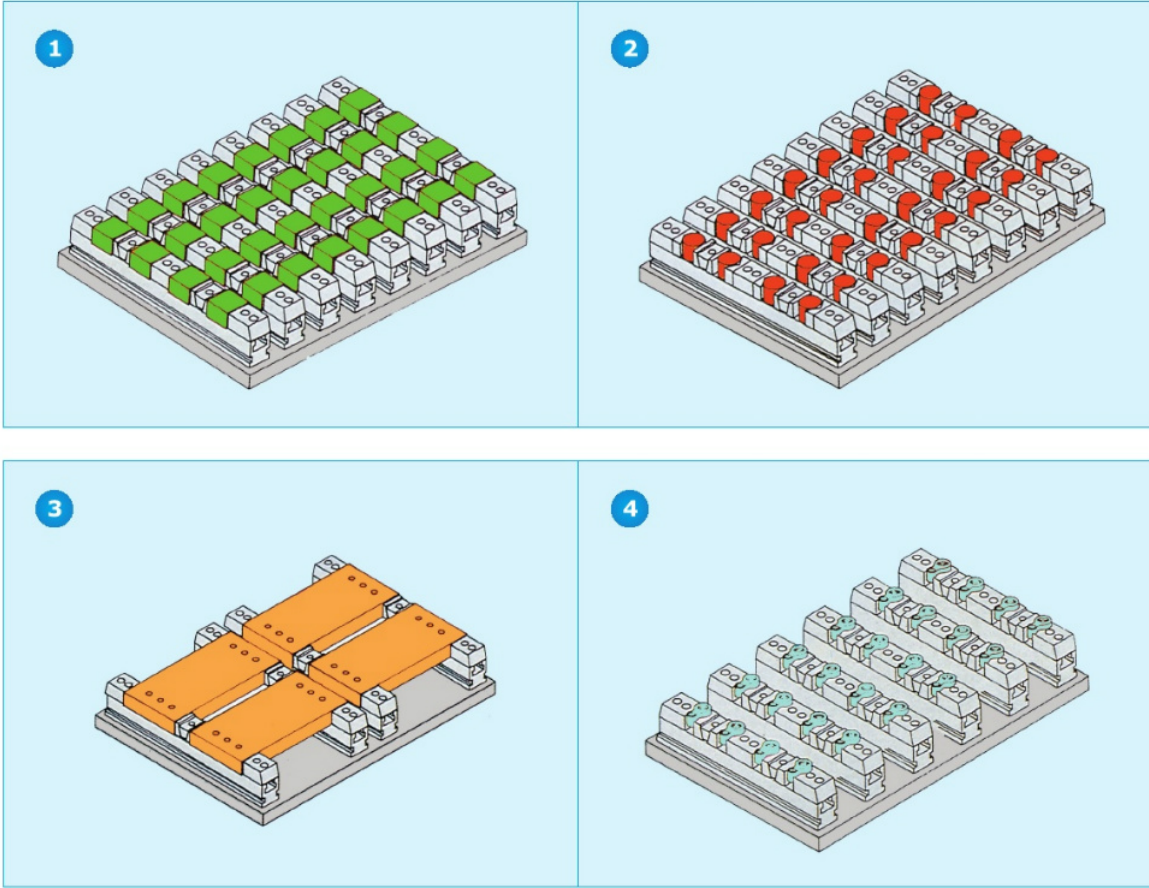
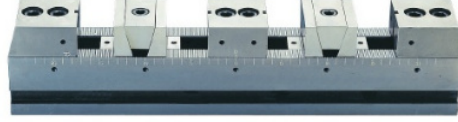
Çeşitli parça sıkma örnekleri



SVF-B Bi-direction Clamping / Çift Yüzlü Sıkma

Clamping Examples

Çeşiti parça sıkma örnekleri

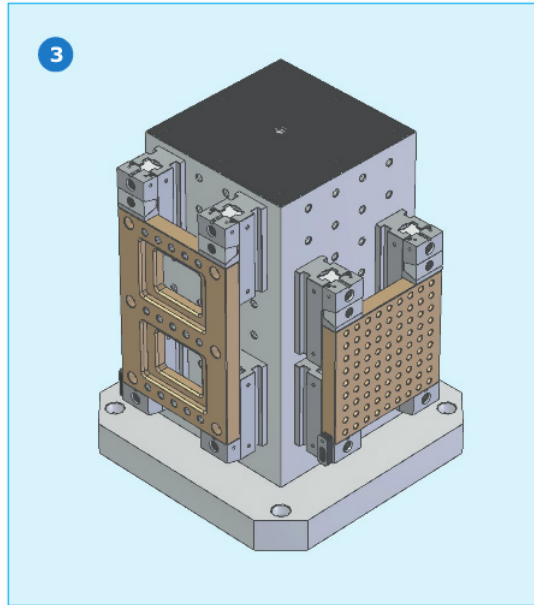
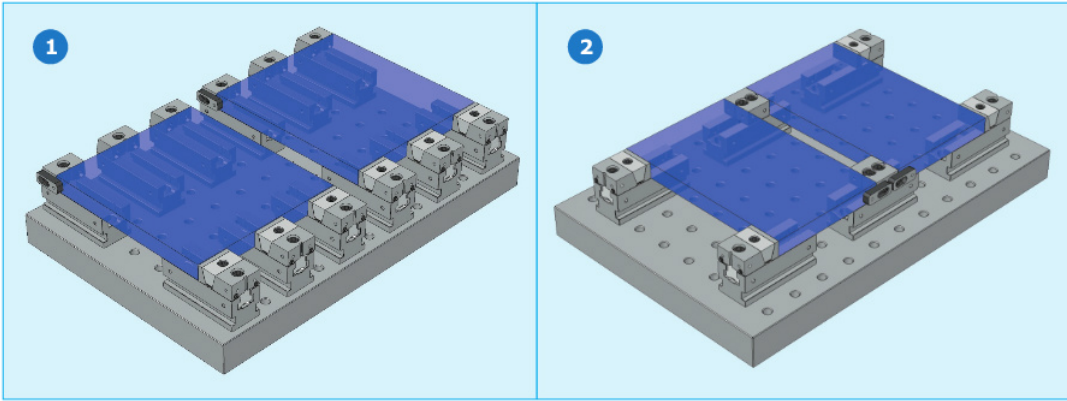
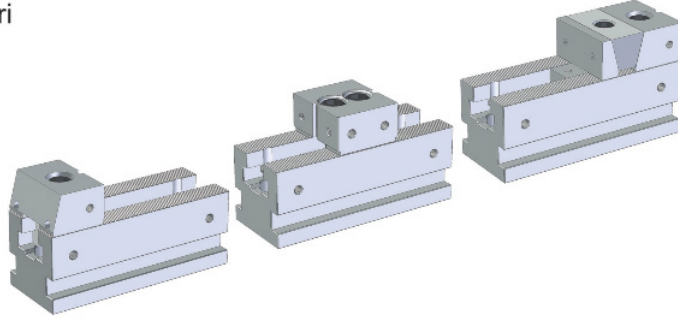


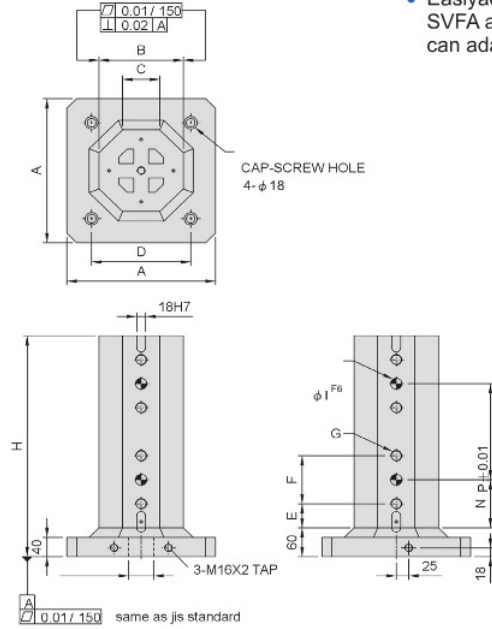
SVF-A type vs SVF-B type

Type		SVF-A	SVF-B
Common features Genel Özellikler	1	Can accommodate a wide range of part quantities & sizes. Geniş aralıklarla ve ölçülerle bağlanabilme	
	2	Can accommodate both regular & regular shaped parts. Aynı şekillerdeki parçaların bağlanabilmesi	
Differences Farklılıklar	1	One way clamping. Tek yönlü sıkma	Two way clamping. Çift yönlü sıkma
	2	For both of Vertical and Horizontal machine Dikey ve yatay işleme makinaları için	For Vertical Machine only. Sadece dikey makinalar için

SVF-C

Clamping Examples SFC ile sıkma örnekleri



**SVF-CB****M/C OCTAGONAL CUBE
M/C SEKİZGEN KULE**

- SVFA-SVFB tipi mngenerlerden 4'er adet bağlanabilir.
- Easlyadaps to type of SVFA and SVFB vises can adapts up to 4 pcs

Order example

MODEL NO.	A	B	C	D	E	F	G	H	I	N	P
SVF-5030-300CB8-80	300	170	55	200	30	80	M12	360	12	70	160
SVF-5030-300CB8-100					50	100				100	100
SVF-5030-320CB8-80	320	170	55	200	30	80	M12	360	12	70	160
SVF-5030-320CB8-100					50	100				100	100
SVF-5040-300CB8-80	300	170	55	200	40	80	M12	460	12	80	240
SVF-5040-300CB8-100					50	100				100	200
SVF-5040-320CB8-80	320	170	55	200	40	80	M12	460	12	80	240
SVF-5040-320CB8-100					50	100				100	200
SVF-5050-400CB8-80	400	200	55	320	50	80	M12	560	12	90	320
SVF-5050-400CB8-100					50	100				100	300
SVF-5050-500CB8-80	500	250	55	400	50	80	M12	560	12	90	320
SVF-5050-500CB8-100					50	100				100	300
SVF-5060-400CB8-80	400	200	55	320	60	80	M12	660	12	100	400
SVF-5060-400CB8-100					50	100				100	400
SVF-5060-500CB8-80	500	250	55	400	60	80	M12	660	12	100	400
SVF-5060-500CB8-100					50	100				100	400
SVF-5070-500CB8-80	500	250	55	400	70	80	M12	760	12	110	480
SVF-5070-500CB8-100					50	100				100	500
SVF-7240-300CB8-100	300	170	75	200	50	100	M16	460	16	100	200
SVF-7240-320CB8-100	320	170	75	200	50	100	M16	460	16	100	200
SVF-7250-400CB8-100	400	200	75	320	50	100	M16	560	16	100	300
SVF-7250-500CB8-100	500	250	75	400	50	100	M16	560	16	100	300
SVF-7260-400CB8-100	400	200	75	320	50	100	M16	660	16	100	400
SVF-7260-500CB8-100	500	250	75	400	50	100	M16	660	16	100	400
SVF-7270-500CB8-100	500	250	75	400	50	100	M16	760	16	100	500

(Order optional mounting cube as a separate item)

(Özel ölçülerdeki siparişlerinizi lütfen ayrıca belirtiniz.)

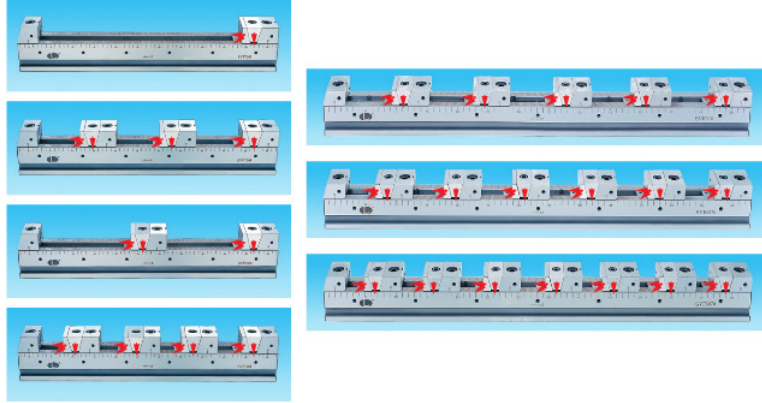


SVF-A

Forcing direction

Çenelerin sıkma yönleri

Clamping force: 1.5t-2.0t



Maximum width of the workpieces which can be clamped

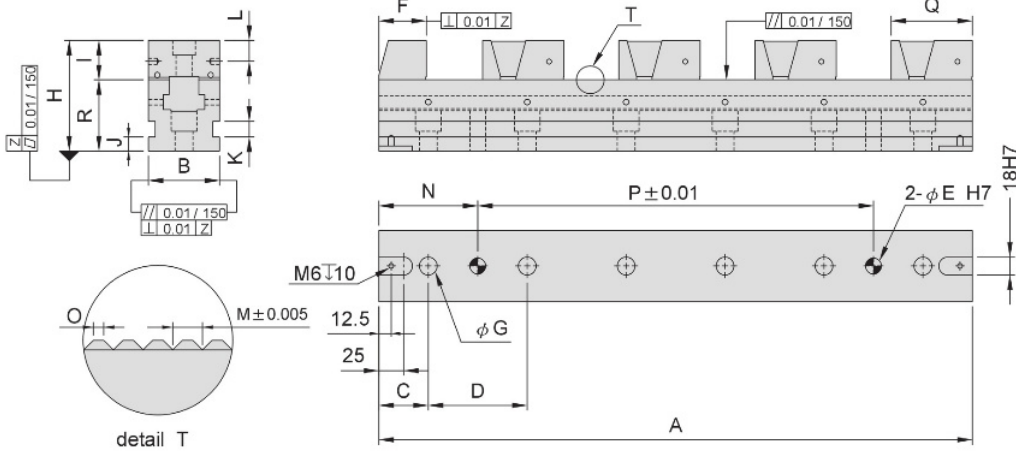
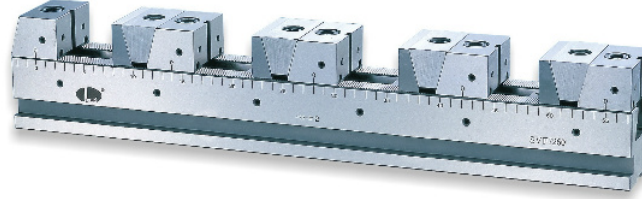
Parça genişliğine göre parça sıkma adetleri

MODEL NO.	one workpiece	two workpieces	three workpieces	four workpieces
SVF-A-5030	203	71	27	--
SVF-A-5040	303	121	60	30
SVF-A-5050	403	171	94	55
SVF-A-5060	503	221	127	80
SVF-A-5070	603	271	160	105
SVF-A-7240	269	93	35	--
SVF-A-7250	369	143	68	30
SVF-A-7260	469	193	101	55
SVF-A-7270	569	243	135	80
SVF-A-10050	359	133	57	20
SVF-A-10060	459	183	91	45
SVF-A-10070	559	233	124	70

MODEL NO.	five workpieces	six workpieces	seven workpieces
SVF-A-5030	--	--	--
SVF-A-5040	--	--	--
SVF-A-5050	32	--	--
SVF-A-5060	52	33	--
SVF-A-5070	72	50	34
SVF-A-7240	--	--	--
SVF-A-7250	--	--	--
SVF-A-7260	28	--	--
SVF-A-7270	48	26	--
SVF-A-10050	--	--	--
SVF-A-10060	17	--	--
SVF-A-10070	37	15	--

One way clamping
Tek Yönlü Sıkma

- Material 100% tool steel
- Heat treated & ground HRC 55°
- Malzeme 100 % takım çeliği
- 55 ° HRC ısıtıl işlemli ve taşlanmış



Order example

MODEL NO.	A	B±0.01	C	D	E	F	G	H	I	J	K	L	M	N	O	P	Q	R	KG
SVF-A-5030-80*	300	50	30	80	12	36	13	75	24.8	10	12	12.5	1.5	70	0.5	160	60	50	7
SVF-A-5030-100*			50	100										100		100			
SVF-A-5040-80	400	50	40	80	12	36	13	75	24.8	10	12	12.5	1.5	80	0.5	240	60	50	9
SVF-A-5040-100			50	100										100		200			
SVF-A-5050-80	500	50	50	80	12	36	13	75	24.8	10	12	12.5	1.5	90	0.5	320	60	50	12.5
SVF-A-5050-100			50	100										100		300			
SVF-A-5060-80	600	50	60	80	12	36	13	75	24.8	10	12	12.5	1.5	100	0.5	400	60	50	11
SVF-A-5060-100			50	100										100		100			
SVF-A-5070-80	700	50	70	80	12	36	13	75	24.8	10	12	12.5	1.5	110	0.5	480	60	50	14
SVF-A-5070-100			50	100										100		500			
SVF-A-7240-100*	400	72	50	100	16	48	17	110	39.7	14	16	21.3	2.0	100	0.7	200	82	72	19
SVF-A-7250-100	500	72	50	100	16	48	17	110	39.7	14	16	21.3	2.0	100	0.7	300	82	72	25
SVF-A-7260-100	600	72	50	100	16	48	17	110	39.7	14	16	21.3	2.0	100	0.7	400	82	72	27
SVF-A-7270-100	700	72	50	100	16	48	17	110	39.7	14	16	21.3	2.0	100	0.7	500	82	72	30
SVF-A-10050-100	500	100	50	100	16	48	17	115	43.3	14	16	22	2.5	100	1	300	93	72	72
SVF-A-10060-100	600	100	50	100	16	48	17	115	43.3	14	16	22	2.5	100	1	400	93	72	72
SVF-A-10070-100	700	100	50	100	16	48	17	115	43.3	14	16	22	2.5	100	1	500	93	72	72

(SVF vises listed above come equipped to clamp 1-4 parts, if additional part clamping is required please order optional accessories)
* these units will only hold up to 3 parts.

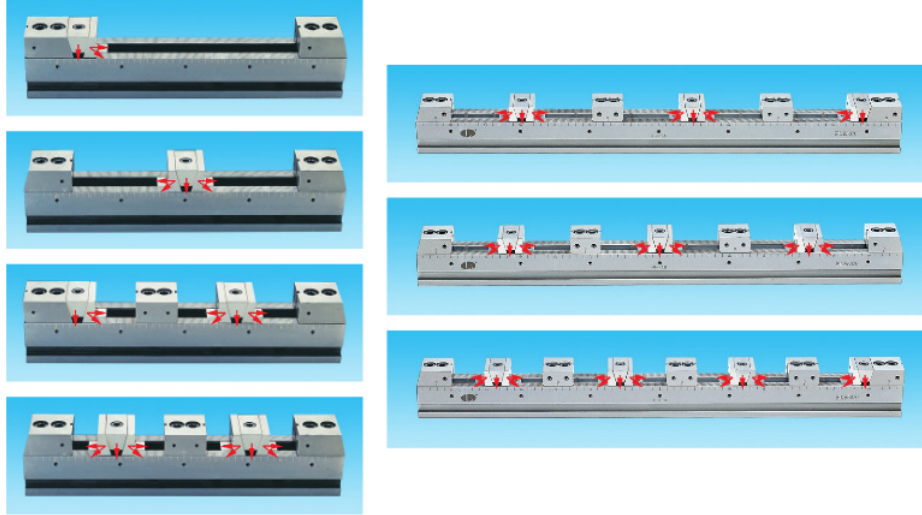
(SVF mengenerleri yukarıda belirtildiği gibi 1-4 parça sıkma ekipmanlarıyla birlikte sunulur, eğer ilave sıkma parçaları gerekirse opsiyonel aksesuarlardan seçebilirsiniz.
* Bu takım 3 iş parçası için geçerlidir.



SVF-B

Forcing direction
Çenelerin sıkma yönleri

Clamping force: 1.5t-2.0t



Maximum width of the workpieces which can be clamped
Parça genişliğine göre parça sıkma adetleri

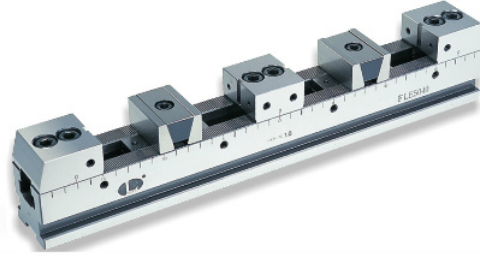
MODEL NO.	one workpiece	two workpieces	three workpieces	four workpieces	five workpieces
SVF-B-5030	175	82	32	20	--
SVF-B-5040	275	130	65	46	--
SVF-B-5050	375	180	96	71	--
SVF-B-5060	475	235	130	95	60
SVF-B-5070	575	285	163	120	80
SVF-B-7240	215	100	35	--	--
SVF-B-7250	315	150	65	45	--
SVF-B-7260	415	200	100	70	--
SVF-B-7270	518	250	134	96	56

MODEL NO.	six workpieces	seven workpieces	eight workpieces	nine workpieces
SVF-B-5030	--	--	--	--
SVF-B-5040	--	--	--	--
SVF-B-5050	--	--	--	--
SVF-B-5060	50	30	25	15
SVF-B-5070	66	44	37	26
SVF-B-7240	--	--	--	--
SVF-B-7250	--	--	--	--
SVF-B-7260	--	--	--	--
SVF-B-7270	44	24	19	--

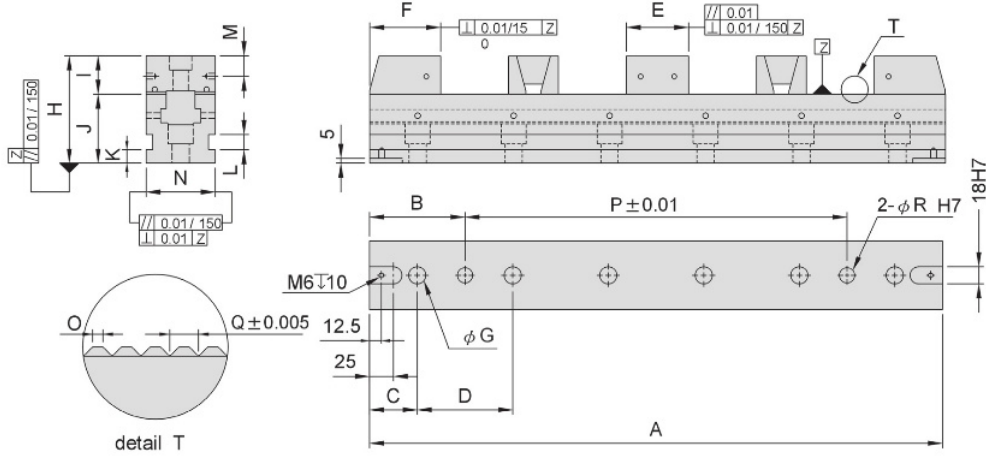
SVF-B FLEXIBLE LINE UP VISE SERIES SIRALI MENGENE SERİSİ

Two way clamping
Çift Yönlü Sıkma

- Material 100% tool steel
- Heat treated & ground HRC 55°
- Malzeme 100 % takım çeliği
- 55 ° HRC ısıtılmış ve taşlanmış



Tek hareketle iki parçayı aynı anda sıkılabilir



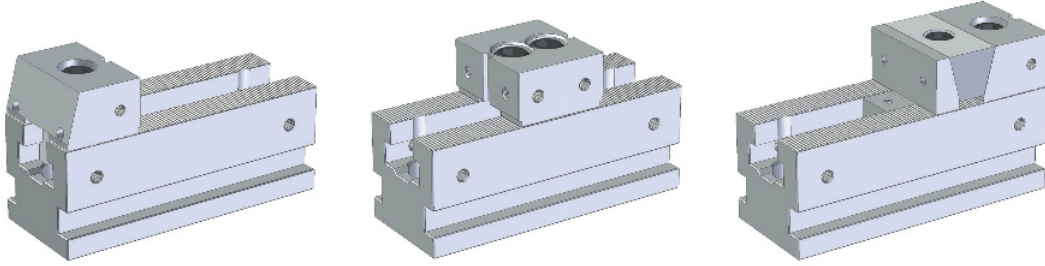
Order example

MODEL NO.	A	B	C	D	E	F	G	H	I	J	K	L	M	N	O	P	Q	R	KG
SVF-B-5030-80	300	70	30	80	44	50	13	75	24.8	50	10	12	12.5	50	0.5	160	1.5	12	7
SVF-B-5030-100		100	50	100												100			
SVF-B-5040-80	400	80	40	80	44	50	13	75	24.8	50	10	12	12.5	50	0.5	240	1.5	12	9
SVF-B-5040-100		100	50	100												200			
SVF-B-5050-80	500	90	50	80	44	50	13	75	24.8	50	10	12	12.5	50	0.5	320	1.5	12	10
SVF-B-5050-100		100	50	100												300			
SVF-B-5060-80	600	100	60	80	44	50	13	75	24.8	50	10	12	12.5	50	0.5	400	1.5	12	11
SVF-B-5060-100		100	50	100												500			
SVF-B-5070-80	700	110	70	80	44	50	13	75	24.8	50	10	12	12.5	50	0.5	480	1.5	12	14
SVF-B-5070-100		100	50	100												500			
SVF-B-7240-100	400	100	50	100	65	75	17	110	39.7	72	14	16	21.3	72	0.7	200	2.0	16	19
SVF-B-7250-100	500	100	50	100	65	75	17	110	39.7	72	14	16	21.3	72	0.7	300	2.0	16	25
SVF-B-7260-100	600	100	50	100	65	75	17	110	39.7	72	14	16	21.3	72	0.7	400	2.0	16	27
SVF-B-7270-100	700	100	50	100	65	75	17	110	39.7	72	14	16	21.3	72	0.7	500	2.0	16	30

(SVF vises listed above come equipped to clamp 1-4 parts, if additional part clamping is required please order optional accessories)

(SVF mengeneri yukarıda belirtildiği gibi 1-4 parça sıkma ekipmanlarıyla birlikte sunulur. Eğer ilave sıkma parçaları gerekirse opsiyonel aksesuarlardan seçebilirsiniz.)

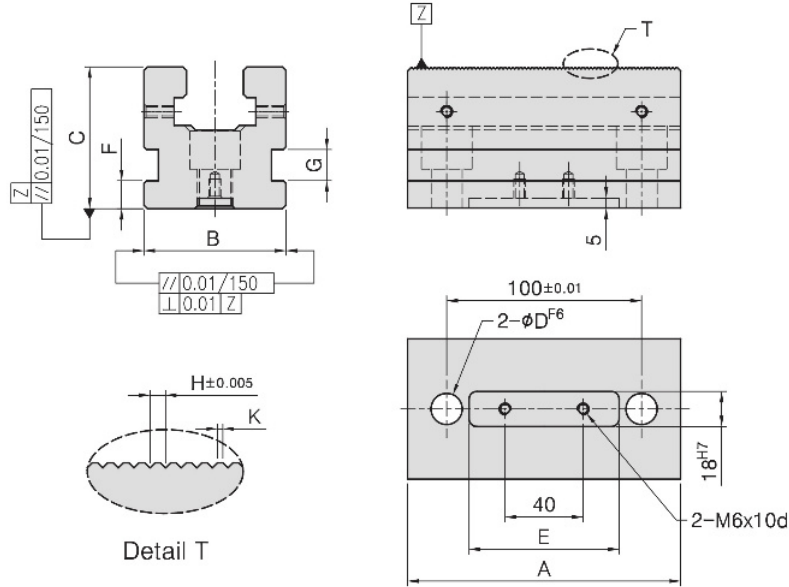
- Material 100% tool steel
- Heat treated & ground HRC 55°
- Malzeme 100 % takım çeliği
- 55 ° HRC Isıl işlemli ve taşlanmış



MODEL NO.
SVF-C-5013-100-A
SVF-C-7214-100-A

MODEL NO.
SVF-C-5013-100-B
SVF-C-7214-100-B

MODEL NO.
SVF-C-5013-100-C
SVF-C-7214-100-C

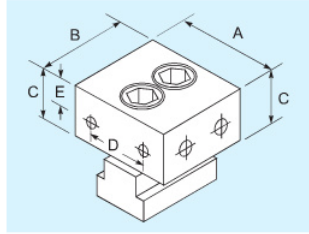
Main body Ana Gövde

Order example

MODEL NO.	A	B	C	D	E	F	G	H	K	KG
SVF-AB01-5013-100	130	50	50	12	77	10	12	1.5	0.5	2
SVF-AB01-7214-100	140	72	72	16	77	14	16	2	0.7	6

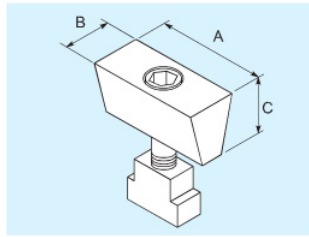
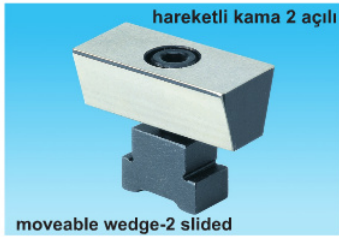
SVF

Optional accessory parts

SVF tipi mengener için opsiyonel aksesuarlar

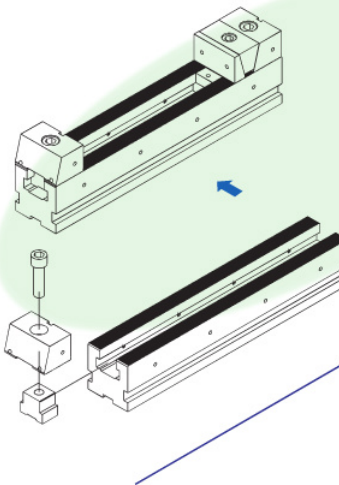


TYPE	A	B	C	D	E
SVF-B01-50	50	44	25	30	12.5
SVF-B01-72	72	65	40	44	21.5

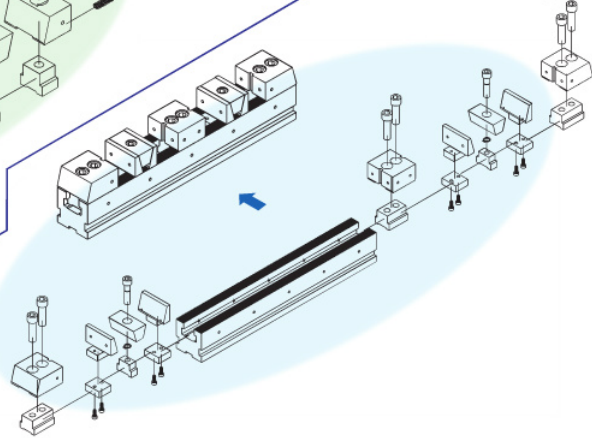


TYPE	A	B	C
SVF-B02-50	50	22.5	18
SVF-B02-72	72	35	29

SVF-A Assembled / Montaj

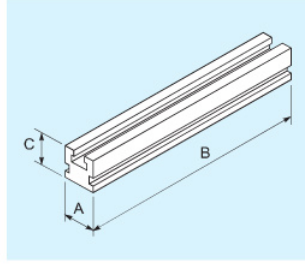


SVF-B Assembled / Montaj

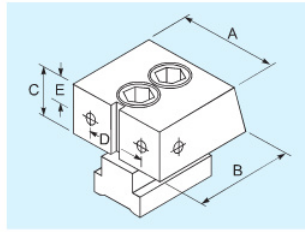


Standard parts included with all SVF vise

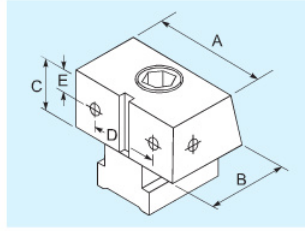
T-slot nut		Clamp		Screw		Threaded dowel pin		Locating key		Hexagonal keys	
MODEL NO.	QTY	MODEL NO.	QTY	MODEL NO.	QTY	MODEL NO.	QTY	MODEL NO.	QTY	MODEL NO.	QTY
PT06-1812 or PT06-1816	Same as hole	SVF-P01-50 or SVF-P01-72	4 pcs	CAP-M12-40L or CAP-M16-50L	Same as hole	PT11-1234 or PT11-1642	2 pcs	PT27-1810 CAP-M6-10L	2 pcs	SPN-M6HEX SPN-M8HEX or SPN-M10HEX SPN-M12HEX	1 pc 1 pc 1 pc 1 pc



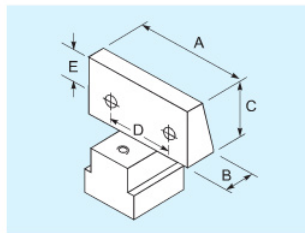
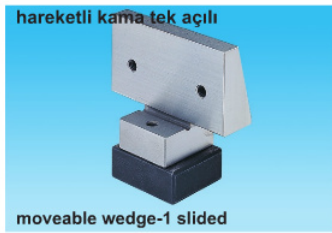
TYPE	A	B	C
SVF-AB01-5030-80	50	300	50
SVF-AB01-5030-100	50	300	50
SVF-AB01-5040-80	50	400	50
SVF-AB01-5040-100	50	400	50
SVF-AB01-5050-80	50	500	50
SVF-AB01-5050-100	50	500	50
SVF-AB01-5060-80	50	600	50
SVF-AB01-5060-100	50	600	50
SVF-AB01-5070-80	50	700	50
SVF-AB01-5070-100	50	700	50
SVF-AB01-7240-100	72	400	72
SVF-AB01-7250-100	72	500	72
SVF-AB01-7260-100	72	600	72
SVF-AB01-7270-100	72	700	72
SVF-AB01-10050-100	100	500	72
SVF-AB01-10060-100	100	600	72
SVF-AB01-10070-100	100	700	72



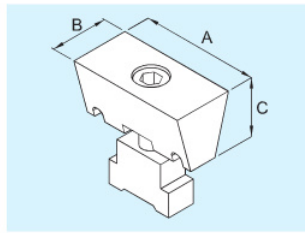
TYPE	A	B	C	D	E
SVF-AB02-50	50	50	25	30	12.5
SVF-AB02-72	72	74	40	44	21.5
SVF-AB02-100	100	75	43	64	22



TYPE	A	B	C	D	E
SVF-AB03-50	50	35	25	30	12.5
SVF-AB03-72	72	48	40	44	21.5
SVF-AB03-100	100	48	43	64	22



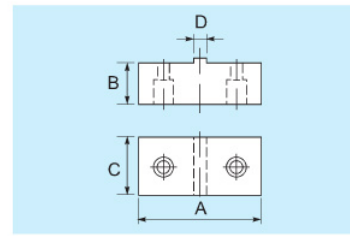
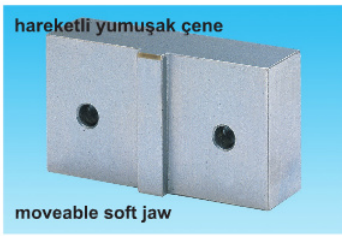
TYPE	A	B	C	D	E
SVF-AB04-50	50	12	25	30	12.5
SVF-AB04-72	72	18	40	44	21.5
SVF-AB04-100	100	21	43	64	22



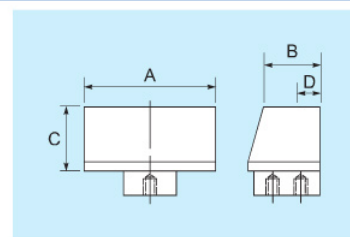
TYPE	A	B	C
SVF-A01-50	50	24	22
SVF-A01-72	72	35	35
SVF-A01-100	100	45	38

SVF

Optional accessory parts / Opsiyonel Aksesuarlar

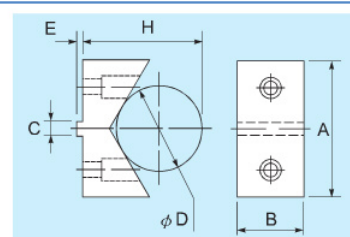
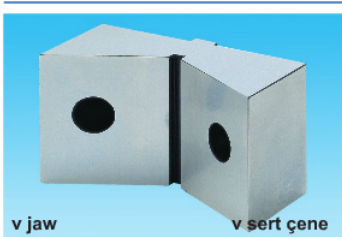


TYPE	A	B	C	D (h7)
SVF-S01-50	50	17	25	5
SVF-S01-72	72	19	40	8

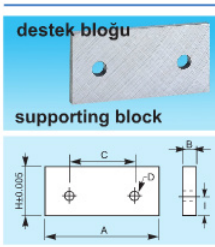


TYPE	A	B	C	D
SVF-S02-50	50	20	25	13
SVF-S02-72	72	26	40	19

D is the minimum dimension to be re-machined to accommodate the clamping requirement.



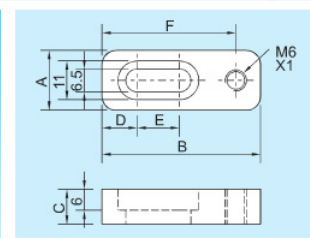
TYPE	A	B	C	D	E	H	CLAMP (MAX)
SVF-S03-50	50	25	5	32	2	44.2	φ70
SVF-S03-72	72	40	8	42	3	61	φ110



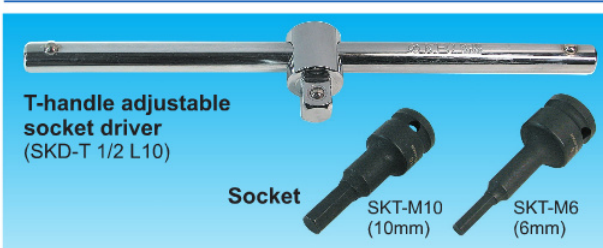
TYPE	A	B	C	D	H	I	KG
SVF-S04-50-22		3			22		0.02
SVF-S04-50-20	49.5	5	30	φ6	20	12.3	0.037
SVF-S04-50-17		5			17		0.025
SVF-S04-72-37		3			37		0.058
SVF-S04-72-35		5			35		0.096
SVF-S04-72-30	71.5	5	44	φ7	30		0.082
SVF-S04-72-25		5			25		0.07



TYPE	A
SVF-S05-10	10
SVF-S05-15	15
SVF-S05-23	23



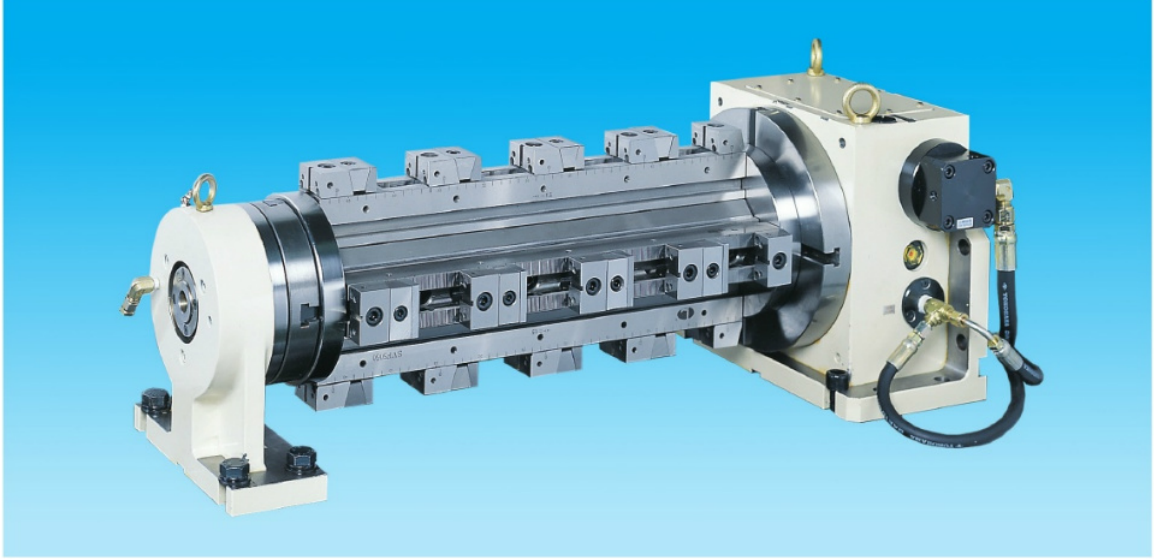
TYPE	A	B	C	D	E	F
SVF-S06-50	17	45	10	10	12	38
SVF-S06-72	17	50	10	10	12	43



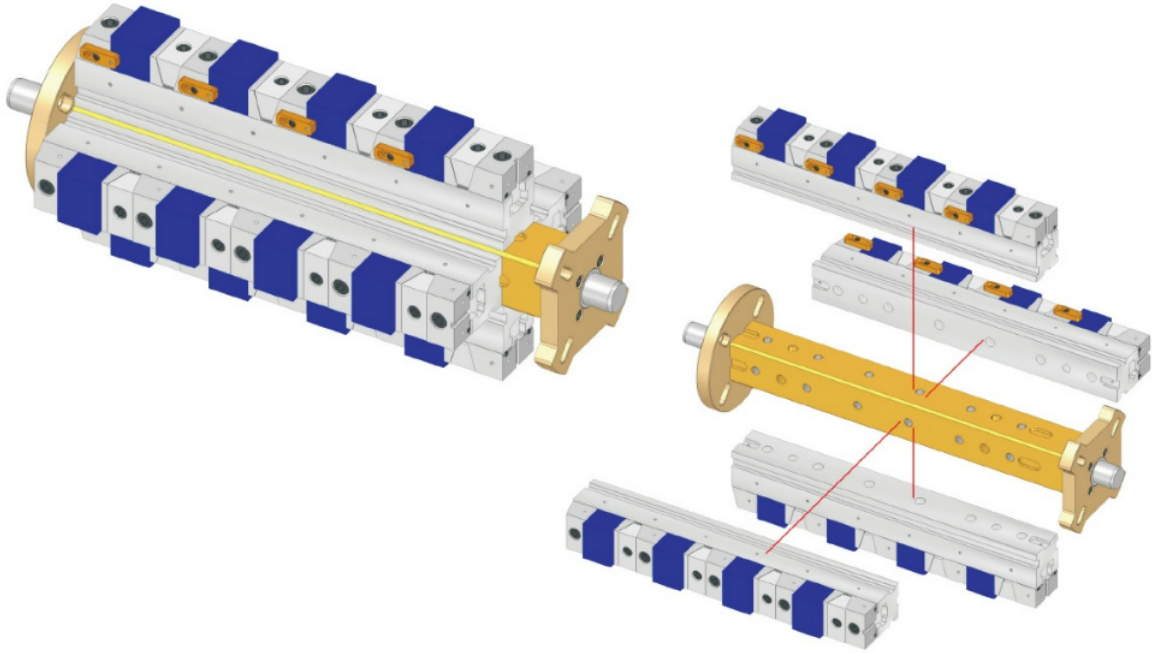


SVFX INDEXING TABLE

APPLICATION EXAMPLE / SVF tipi mengenerin Divizör üzerinde uygulaması

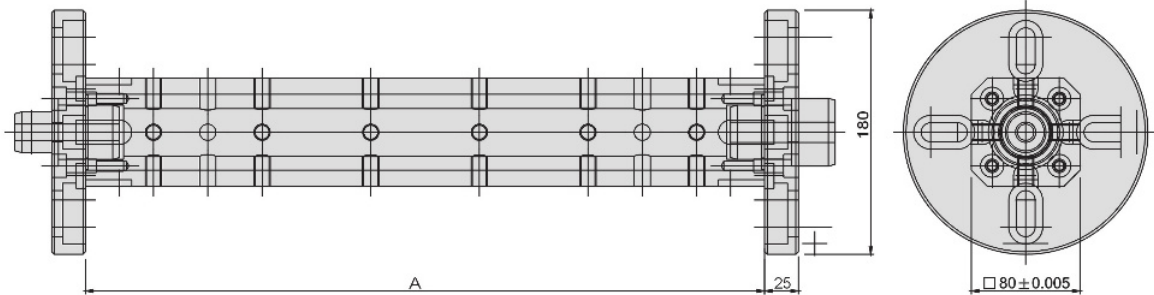


ASSEMBLED / Montaj



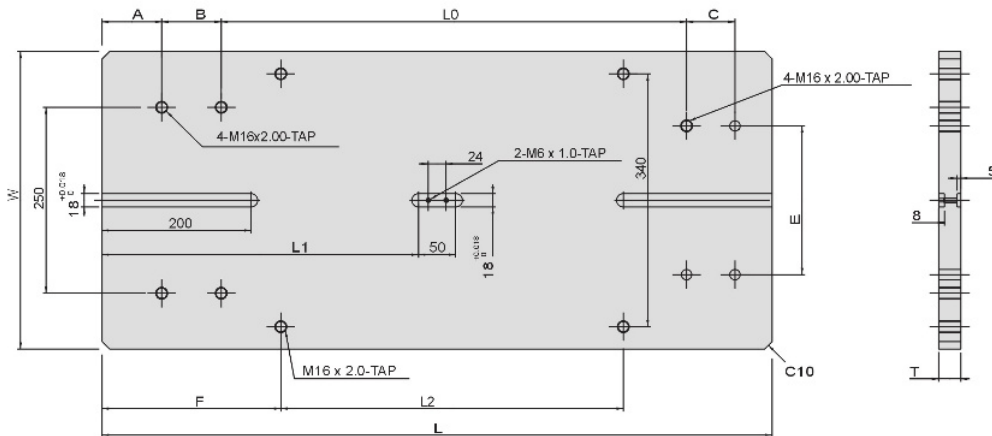


SVFX



Model	A	Model	A
SVFX-5030-80	300	SVFX-5050-100	500
SVFX-5040-80	400	SVFX-5060-100	600
SVFX-5050-80	500	SVFX-5070-100	700
SVFX-5060-80	600	SVFX-7240-100	400
SVFX-5070-80	700	SVFX-7250-100	500
SVFX-5030-100	300	SVFX-7260-100	600
SVFX-5040-100	400	SVFX-7270-100	700

BASE PLATE



Model	L	L0	L1	L2	W	T	A	B	C	E	F
SVFX-5030BP	700	425	325	260	400	30	80	80	72	200	220
SVFX-5040BP	800	525	375	360							
SVFX-5050BP	900	625	425	460							
SVFX-5060BP	1000	725	475	560							
SVFX-5070BP	1100	825	525	660	500	35	45	185	135	300	280
SVFX-7240BP	920	520	435	430							
SVFX-7250BP	1020	620	485	530							
SVFX-7260BP	1120	720	535	630							
SVFX-7270BP	1220	820	585	730							

*Special design welcome!

(Optional accessory available for being ordered separately)



**ALV****HIGH STRENGTH
ALUMINUM LINE UP VISE****YÜKSEK MUKAVEMETLİ ALÜMİNYUM SIRALI MENGENE**

- Material: High strength aluminum A7075 (Hard coat surface)
Tool steel (Hardness: over HRC 55°)
- Application: Ideal for aluminum or irregular shaped work pieces.

Malzeme : A 7075 (Sert yüzey tabakası)
Takım Çeliği (Sertlik : 55 ° HRC üzeri)

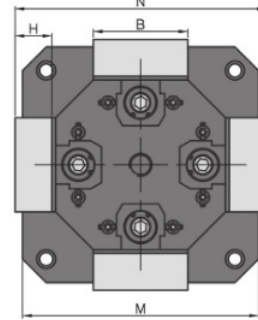
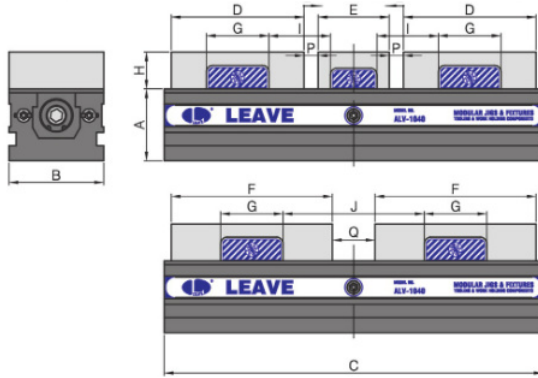
Uygulama :

Alüminyum veya düzensiz şekilli parçalar için ideal

ALV-1030
ALV-1040
ALV-1550

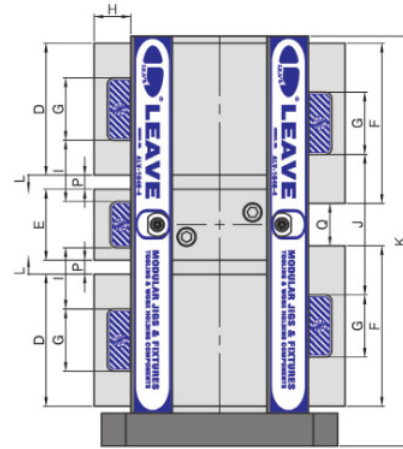


ALV-1040-4
ALV-1550-4

**Order Example**

MODEL NO.	A	B	C	D	E	F	G	H
ALV-1030	76	100	300	110	60	140	66	39
ALV-1040	76	100	400	140	75	170	66	39
ALV-1550	95	150	500	185	80	207.5	66	49
ALV-1040-4	-	100	-	140	75	170	66	39
ALV-1550-4	-	150	-	185	80	207.5	66	49

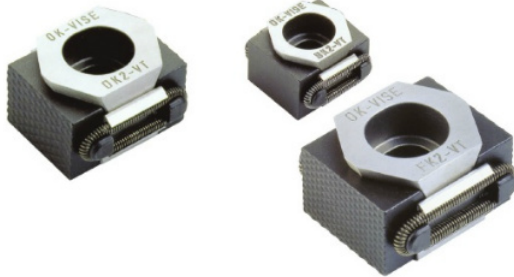
MODEL NO.	I	J	K	L	M	N	P	Q
ALV-1030	44.5	135	-	10	-	-	0-10	0-20
ALV-1040	65	149	-	15	-	-	0-15	15-45
ALV-1550	97.5	244	-	22.5	-	-	0-22.5	35-80
ALV-1040-4	65	149	435	15	250	266	0-15	15-45
ALV-1550-4	97.5	244	535	22.5	300	338	0-22.5	35-80





OK-VISE

CLAMPING METHOD / PARÇA BAĞLAMA YÖNTEMİ

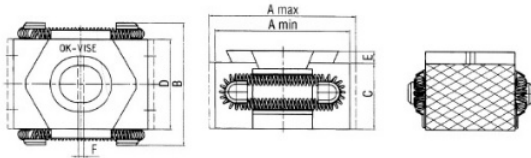


• ULTIMATE EFFICIENCY

The effectiveness of a machining center does not lie in the number of pallets, but in the extent to which the capacity of each pallet can be utilized, in other words, how many pieces can be machined at the same time. As the pictures indicate, with OK-VISE low-profile clamps it is possible to achieve the highest level of this effectiveness.

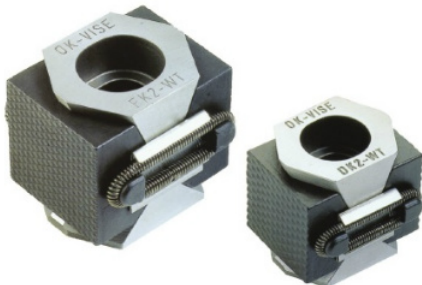
• ABSOLUTE STABILITY

The key feature of the OK-VISE low-profile clamp is its cross-wedge construction in both the horizontal and the vertical plane which means that the clamp is locked firmly in every direction as it is tightened down. This cuts out all possibilities of measurement error due to sliding.



- Aynı anda her iki yöne sıkılabilme özelliği
- Küçük dizayn büyük sıkma kapasitesi
- Parça bağlamada azami yer kazancı
- Hassas ve dinamik yapı
- Çok amaçlı bağlama yapabilmeye olanağı
- Tek sıkma ile 3 yönlü işleme yapabilmeye özelliği
- İşlenebilir çene

Type	A			B	C	D	E	F	Socket Head Screw DIN 912	Pressing force of jaws, kp	Weight in kg approx.	Hardness of jaws HRC
	min	optimum	max									
BK2-VT	27	29	31	29	15	21	2.5	1	M8x020	1500	0.055	48-52
DK2-VT	42	45	49	41	22	30	4	2	M12x030	3000	0.180	48-52
FK2-VT	57	61	66	56	29	42	5	3	M16x040	6000	0.465	48-52



• THREE-DIRECTIONAL MACHINING

Due to a low-profile design of OK-VISE clamps, it is possible to execute flexible three-directional machining of workpieces with one fastening. This ability to machine a workpiece in three planes means improved accuracy, reduces the need for quality control measures and increases opportunities for further processing.

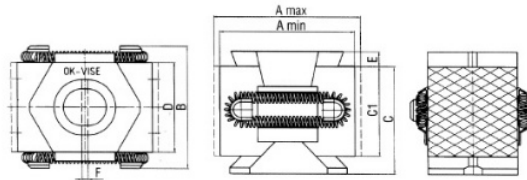
• PULL-DOWN ACTION

When the single-wedge clamps keep the workpieces steadily in place, not allowing upward or downward movement, the double-wedge clamps generate a pull-down action pressing the workpieces also

• towards the fixture base.

MACHINABLE JAWS

Single-wedge clamps are also available with extended jaws that can be machined to suit the geometry of the workpiece. The smallest model can be machined up to 3mm and the larger ones up to 5mm.



Type	A			B	C	C1	D	E	F	Socket Head Screw DIN 912	Pressing force of jaws, kp	Weight in kg approx.	Hardness of jaws HRC
	min	optimum	max										
DK2-WT	42	45	49	41	36	30	30	5	2	M12x040	5000	0.275	48-52
FK2-WT	57	61	67	56	50	42	42	5	3	M16x060	9000	0.730	48-52



Tool Holder is C

Easy assemble and dis-assemble tool holder from main body while pressing the valve on the right hand side of the unit.

Değiştirilebilir Takım Tutucu

Ana gövdenin sağ tarafında bulunan düğmeye basılarak takım tutucuyu kolay sökme takma yapılır.

Tool Holder is Adjustable up to 360°

Easily adjusts tool holders for a full 360° (45° increments) by pushing the valve on the top of the tightening fixture.

Takım tutucu 360 ° ye kadar ayarlanabilir

Takım montaj aparatının üst kısmında bulunan düğmeye basılarak kolayca takım tutucuyu 45 ° lik açılarla 360 ° ye kadar ayarlayabilme



Tightening Fixture Main Body

Mode No. :TCP-150

Montaj Aparatı Ana Gövdesi



4pcs of M10x40mm bolt can be fastened from the top of the mounting flange or 4pcs of M12 bolt can be fastened from the bottom of the mounting flange.

**Tool Holder
Takım Tutucular**

Mode No. :

TCP-BT30
TCP-BT40
TCP-BT50
TCP-HSK-A-40
TCP-HSK-A-63
TCP-HSK-A-80
TCP-HSK-A-100
TCP-HSK-E-25
TCP-HSK-E-32

TCP-HSK-E-40
TCP-HSK-E-50
TCP-HSK-





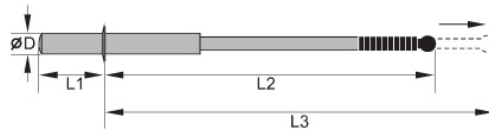
MSP

PORTABLE METAL CHIP REMOVE BAR
PORTATİF METAL TALAŞ TOPLAYICI ÇUBUK

- Excellent attraction ability. Light in weight. Easy to operate.
- Designed for accessing chips in tight areas & T-slots.
- Simple in design, Power free and maintenance free.



- Mükemmel çekme yeteneği, hafif, kullanımı kolay
- Dar alanlar ve T-kanallar için dizayn edildi
- Basit dizayn, Enerji ve bakım gerektirmez.

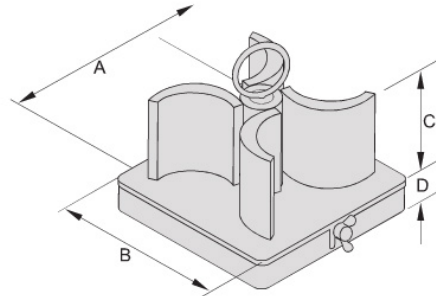


Model NO.	D	L1	L2	L3
MSP-600	ø 32	110	500	650
MSP-900	ø 32	110	800	950
MSP-1200	ø 32	160	1040	1200

MSR

OIL TANK METAL CHIPS REMOVER
YAĞ DEPOSU İÇİ METAL TALAŞ TOPLAYICISI

- Excellent attraction ability. Large magnetic area. Light in weight, easy to install and clean.
- Helps prolong pump & valve life by removing very small particles.
- Mükemmel çekme yeteneği. Geniş manyetik alan. Hafif, kolay yerleştirme ve temizlik
- Çok küçük metal parçacıkları toplayarak pompanın ve valfin kullanım süresini uzatır.

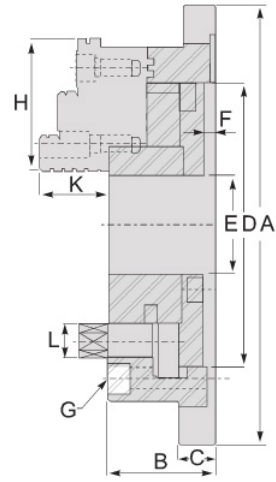
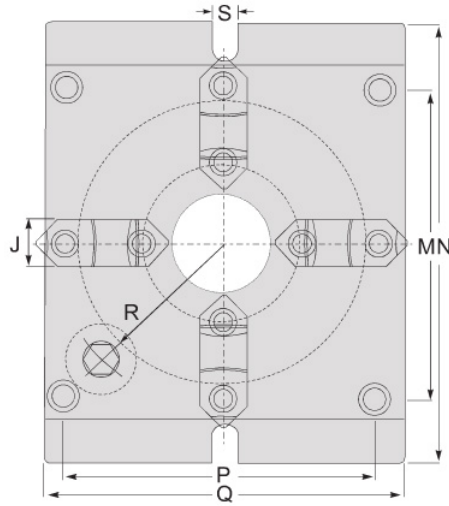
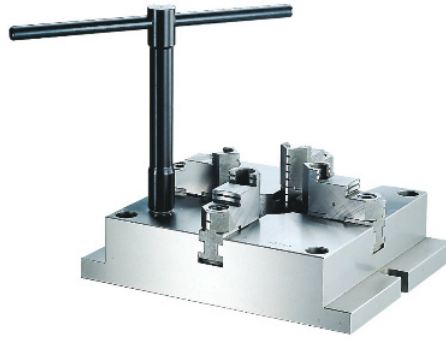


UNIT : mm

MODEL NO.	A	B	C	D
MSR-100	100	100	20	42
MSR-300	110	110	20	42

SUPER THIN SQUARE CHUCKS SÜPER İNCE KARE AYNA

- End-surface Clamping design
- Super thin design
- Convex design
- Unified height for reference point
- Alignment key on bottom of chuck.
- Soft-jaws are available
- MCA square chucks
- Son - yüzey sıkma dizaynı
- Süper ince dizayn
- Dış bükey dizayn
- Referans noktasına en üst derece birleşim
- Sıkma anahtarı aynanın üzerinde
- Yumuşak ayaklar mevcut

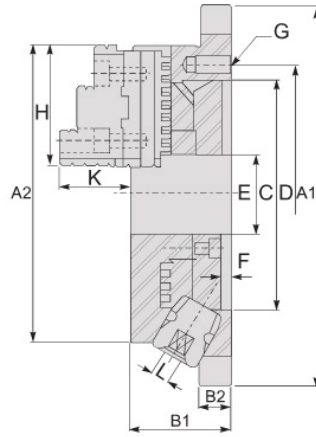
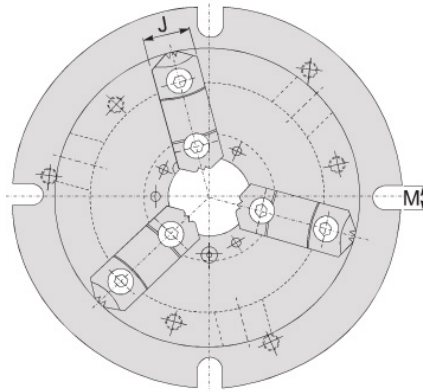


SPEC./MODEL	A	B	C	D	E	F	G	H	J	K	L	M	N	P	Q	R	S	Max. Dia Gripped by	
																		external	internal
MCA-6	215	57	18	130	40	5	4-M10	68	26	39	14	144	165	144	165	66	18	φ 4- φ 128	φ 55- φ 128
MCA-8	250	65	20	160	55	5	4-M12	82	28	43	17	174	200	174	200	83	18	φ 5- φ 162	φ 62- φ 162
MCA-10	310	72	22	200	70	6	4-M14	93	32	50	21	218	250	218	250	103	18	φ 6- φ 200	φ 72- φ 200
MCA-12	380	85	25	260	100	7	4-M16	117	40	56	23	274	310	274	310	135	22	φ 10- φ 265	φ 90- φ 265

**NBK****ROUND SUPER THIN CHUCK
SÜPER İNCE YUVARLAK AYNA**

- The angle between "HANDLE" and "BASE OF CHUCK" is 30 degree, therefore, it is much more convenient for "HANDLE" rotation.
- This "POWER SUPER THIN" design of chuck may increase the "allowable length" of machining operation.
- The flanged design makes it easy to load.
- "POWERFUL TYPE" design can be used with hard or soft jaws.

- Sıkma kolunun Ayna tabanından 30 ° lik açıyla konumlandırılması el ile sıkma işlemini çok daha elverişli hale getiriyor.
- Aynanın ince dizaynı daha uzun parçalar bağlama olanağı sunar.
- Flanş dizaynı yüklemeyi daha kolaylaştırır.
- Güçlü yapısı sayesinde sert ve yumuşak ayak kullanılabilir.



SPEC./MODEL	A1	A2	B1	B2	C	D	E	F	G	H	J	K	L	M	Weight (Kg)	External	Internal
NBK-6	220	170	58	18	130	147	45	6	3-M10	68	26	40	10	13	11	φ 8- φ 160	φ 48- φ 150
NBK-8	270	210	65	20	155	172	60	6	3-M10	82	28	45	11	13	19.5	φ 11- φ 200	φ 62- φ 190
NBK-10	315	255	73	20	190	210	80	6	3-M12	93	32	52	12	16	29.5	φ 12- φ 250	φ 72- φ 240
NBK-12	370	305	80	22	250	285	105	6	3-M12	117	40	59	14	18	42.5	φ 15- φ 300	φ 86- φ 290

