



48 years of experience...

48 yıllık tecrübe...

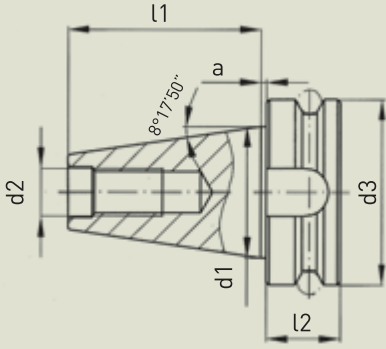
**TOOLHOLDERS
&
COLLETS**

*TAKIM TUTUCULAR
&
PENSLER*



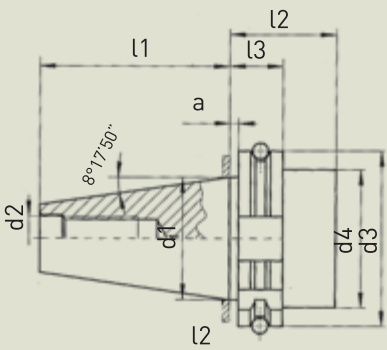
TOOLHOLDERS & COLLETS
TAKIM TUTUCULAR & PENSLER

TOOLHOLDERS TAPER STANDARDS TAKIM TUTUCU KONİK STANDARTLARI



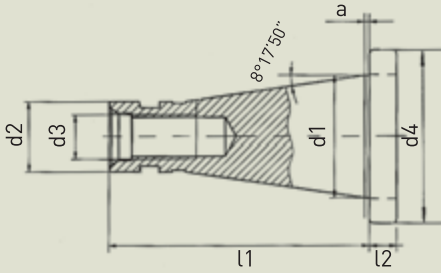
MAS 403 BT (JIS B 6339)

TAPER	a +/- 0.2	d1	d2	d3	l2	l1 +/- 0.2
BT30	2	31.75	M12	46	20	48.4
BT40	2	44.45	M16	63	25	65.4
BT50	3	69.85	M24	100	35	101.8



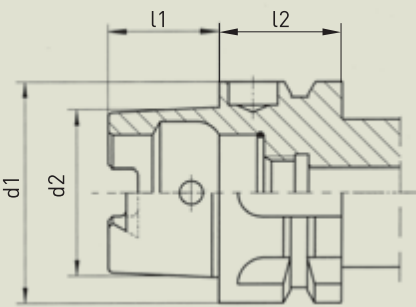
DIN 69871 A (ISO 7388-1)

TAPER	a +/- 0.1	d1	d2	d3 0/- 0.1	d4 max.	l2 min.	l3 0/- 0.1	l1 0/- 0.3
DIN 30	3.2	31.75	M12	50.0	44	35	19.1	47.8
DIN 40	3.2	44.45	M16	63.55	50	35	19.1	68.4
DIN 50	3.2	69.85	M24	97.5	80	35	19.1	101.75



DIN 2080 (ISO)

TAPER	a +/- 0.2	d1	d2 a10	d3	d4 0/-0.4	l2 +/- 0.15	l1
ISO 30	1.6	31.75	17.4	M12	50	8	68.4
ISO 40	1.6	44.45	25.3	M16	63	10	93.4
ISO 50	3.2	69.85	39.6	M24	97.5	12	126.8



HSK DIN69893-1 A (ISO 12164-1)

TAPER	d1	d2	l1	l2
HSK 50	50	38	25	26
HSK 63	63	48	32	26
HSK 80	80	60	40	26

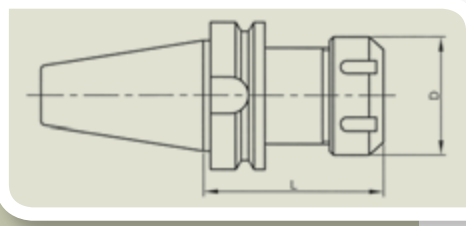
Tapers are according to AT3 specifications
On the collet chucks the run out between outside taper to the taper of collet cavity is max. 5µ.
Tutuculardaki konik hassasiyeti AT3 standardındadır.
Pens tutucularındaki pens yuvası ile dış konik arası salgı max. 5µ.



JIS B 6339 (MAS 403 BT)

TOOLHOLDERS
TAKIM TUTUCULARI

ER COLLET CHUCKS ER PENS BAŞLIKLARI



JIS B 6339 (MAS403 BT) - AD&B - Balanced G6.3

CODE / KOD BT 30	L	D	collet type and Ø clamping range pens tipi ve Ø sıkma aralığı
BT30 ER16	60	28	ER16 Ø1-10mm
BT30 ER25	60	42	ER25 Ø2-16mm
BT30 ER32	60	50	ER32 Ø3-20mm
BT30 ER40	70	63	ER40 Ø4-26mm

CODE / KOD BT 40	L	D	collet type and Ø clamping range pens tipi ve Ø sıkma aralığı
BT40 ER16	60	28	ER16 Ø1-10mm
BT40 ER16 100	100	28	ER16 Ø1-10mm
BT40 ER16 130M	130	22	ER16 Ø1-10mm
BT40 ER16 160	160	28	ER16 Ø1-10mm
BT40 ER20	70	34	ER20 Ø2-13mm
BT40 ER20 100	100	34	ER20 Ø2-13mm
BT40 ER25	70	42	ER25 Ø2-16mm
BT40 ER25 100	100	42	ER25 Ø2-16mm
BT40 ER25 160	160	42	ER25 Ø2-16mm
BT40 ER32	70	50	ER32 Ø3-20mm
BT40 ER32 100	100	50	ER32 Ø3-20mm
BT40 ER32 160	160	50	ER32 Ø3-20mm
BT40 ER40	70	63	ER40 Ø4-26mm
BT40 ER40 100	100	63	ER40 Ø4-26mm
BT40 ER40 160	160	63	ER40 Ø4-26mm

CODE / KOD BT 50	L	D	collet type and Ø clamping range pens tipi ve Ø sıkma aralığı
BT50 ER25	100	42	ER25 Ø2-16mm
BT50 ER25 160	160	42	ER25 Ø2-16mm
BT50 ER32	100	50	ER32 Ø3-20mm
BT50 ER32 160	160	50	ER32 Ø3-20mm
BT50 ER40	100	63	ER40 Ø4-26mm
BT50 ER40 160	160	63	ER40 Ø4-26mm
BT50 ER50	100	78	ER50 Ø12-34mm

FACE MILL ADAPTORS

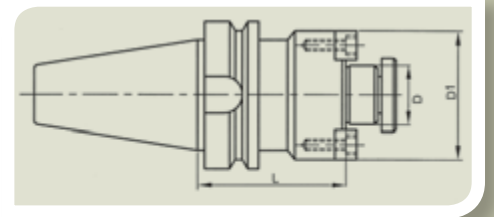
ALINDAN SIKMALI FREZE TUTUCULAR

JIS B 6339 (MAS403 BT) - AD&B - Balanced G6.3

CODE / KOD BT 30	D	D1	L	
BT30 FM16	16	38	40	
BT30 FM22	22	48	40	
BT30 FM27	27	58	40	



CODE / KOD BT 40	D	D1	L	
BT40 FM16	16	38	40	
BT40 FM16 100	16	38	100	
BT40 FM22	22	48	45	
BT40 FM22 100	22	48	100	
BT40 CM22 *	22	40	55	
BT40 FM27	27	58	45	
BT40 FM27 100	27	58	100	
BT40 CM27 *	27	48	55	
BT40 FM32	32	78	50	
BT40 FM32 100	32	78	100	
BT40 CM32 *	32	58	60	
BT40 FM40	40	88	55	

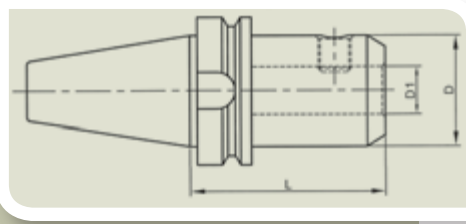


CODE / KOD BT 50	D	D1	L	
BT50 FM16	16	38	55	
BT50 FM22	22	48	55	
BT50 FM27	27	58	55	
BT50 FM32	32	78	55	
BT50 FM40	40	88	55	

* CM are Combi Type shell mill holders suitable for vertical and horizontal keyway tools.

* CM Kombine tip freze tutucusudur, enine ve boyuna kamalı takımları tutmaya uygundur.

WELDON ADAPTORS WELDON TUTUCULAR



JIS B 6339 (MAS403 BT) - AD&B - Balanced G6.3

CODE / KOD BT 30	D1	D	L
BT30 W06	6	25	50
BT30 W08	8	28	50
BT30 W10	10	35	50
BT30 W12	12	42	50
BT30 W16	16	48	63
BT30 W20	20	52	63

CODE / KOD BT 40	D1	D	L
BT40 W06	6	25	50
BT40 W06 100	6	25	100
BT40 W08	8	28	50
BT40 W08 100	8	28	100
BT40 W10	10	35	63
BT40 W10 100	10	35	100
BT40 W12	12	42	63
BT40 W12 100	12	42	100
BT40 W14	14	44	63
BT40 W16	16	48	63
BT40 W16 100	16	48	100
BT40 W18	18	50	63
BT40 W20	20	52	63
BT40 W20 100	20	52	100
BT40 W25	25	65	90
BT40 W32	32	72	100
BT40 W40	40	80	120

CODE / KOD BT 50	D1	D	L
BT50 W06	6	25	63
BT50 W08	8	28	63
BT50 W10	10	35	63
BT50 W12	12	42	80
BT50 W14	14	44	80
BT50 W16	16	48	80
BT50 W18	18	50	80
BT50 W20	20	52	80
BT50 W25	25	65	100
BT50 W32	32	72	105
BT50 W40	40	80	120

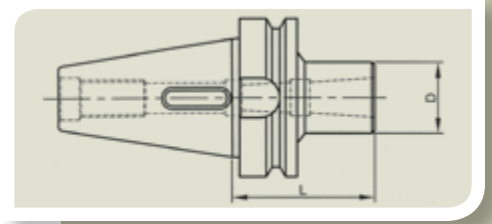
MORSE TAPER ADAPTORS

MORS KONİK TUTUCUSU

JIS B 6339 (MAS403 BT) - Balanced G6.3

CODE / KOD BT 40	MT	D	L	
BT40 MT1	1	25	50	
BT40 MT2	2	32	50	
BT40 MT2 DB *	2	32	50	
BT40 MT3	3	40	70	
BT40 MT3 DB *	3	40	70	
BT40 MT4	4	48	95	
BT40 MT4 DB *	4	48	95	

CODE / KOD BT 50	MT	D	L	
BT50 MT1	1	25	45	
BT50 MT2	2	32	60	
BT50 MT3	3	40	65	
BT50 MT4	4	48	95	
BT50 MT5	5	63	105	



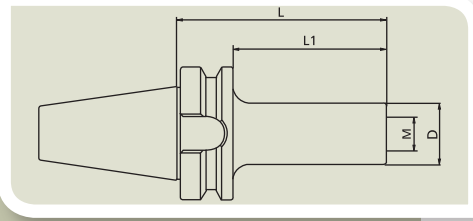
* DB type are drawbar type for holding morse taper shank with screwed end, all others are for tang type morse taper shanks.

* DB tipi çektilme vidalı mors konik saplar içindir, tüm diğerleri çakmalı tip mors konik saplar içindir.

TOOLHOLDER FOR SCREW IN TYPE CUTTERS VİDALI TİP TAKIM TUTUCUSU

JIS B 6339 (MAS403 BT) - AD&B - Balanced G6.3

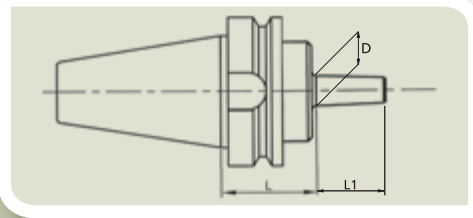
CODE / KOD BT 40	M	D	L	L1	
BT40 M12-75	M12	21	75	48	
BT40 M12-100	M12	21	100	73	
BT40 M12-130	M12	21	130	103	
BT40 M16-75	M16	29	75	48	
BT40 M16-100	M16	29	100	73	
BT40 M16-130	M16	29	130	103	



DRILL CHUCK ADAPTORS MANDREN TUTUCUSU

JIS B 6339 (MAS403 BT)

CODE / KOD BT 40	D	L	L1	
BT40 B12	B12	25	18.5	
BT40 B16	B16	25	24	
BT40 B18	B18	32	32	



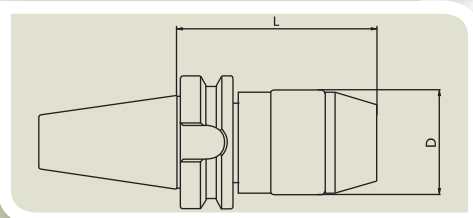
JIS B 6339 (MAS403 BT)

CODE / KOD BT 50	D	L	L1	
BT50 B16	B16	32	24	
BT50 B18	B18	32	32	

DRILL CHUCK HOLDER MANDRENLİ TUTUCU

JIS B 6339 (MAS403 BT)

CODE / KOD BT 40	Clamping Range	D	L	
BT40 DC13	1-13mm	48	100	
BT40 DC16	3-16mm	53	110	

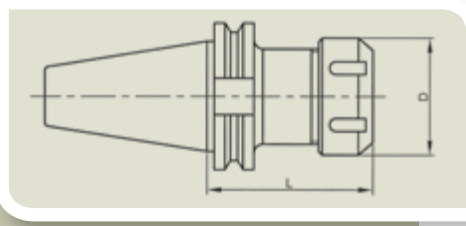




DIN 69871 (ISO 7388-1)

TOOLHOLDERS
TAKIM TUTUCULARI

COLLET CHUCKS PENS BAŞLIKLARI



DIN 69871 (ISO7388-1) - AD&B - Balanced G6.3

CODE / KOD DIN 30	L	D	collet type and Ø clamping range pens tipi ve Ø sıkma aralığı
DIN30 ER16	60	28	ER16 Ø1-10mm
DIN30 ER25	60	42	ER25 Ø2-16mm
DIN30 ER32	60	50	ER32 Ø3-20mm
DIN30 ER40	70	63	ER40 Ø4-26mm

CODE / KOD DIN 40	L	D	collet type and Ø clamping range pens tipi ve Ø sıkma aralığı
DIN40 ER16	60	28	ER16 Ø1-10mm
DIN40 ER16 100	100	28	ER16 Ø1-10mm
DIN40 ER16 130M	130	22	ER16 Ø1-10mm
DIN40 ER16 160	160	28	ER16 Ø1-10mm
DIN40 ER20	70	34	ER20 Ø2-13mm
DIN40 ER20 100	100	34	ER20 Ø2-13mm
DIN40 ER25	70	42	ER25 Ø2-16mm
DIN40 ER25 100	100	42	ER25 Ø2-16mm
DIN40 ER25 160	160	42	ER25 Ø2-16mm
DIN40 ER32	70	50	ER32 Ø3-20mm
DIN40 ER32 100	100	50	ER32 Ø3-20mm
DIN40 ER32 160	160	50	ER32 Ø3-20mm
DIN40 ER40	70	63	ER40 Ø4-26mm
DIN40 ER40 100	100	63	ER40 Ø4-26mm
DIN40 ER40 160	160	63	ER40 Ø4-26mm

CODE / KOD DIN 50	L	D	collet type and Ø clamping range pens tipi ve Ø sıkma aralığı
DIN50 ER25	100	42	ER25 Ø2-16mm
DIN50 ER25 160	160	42	ER25 Ø2-16mm
DIN50 ER32	100	50	ER32 Ø3-20mm
DIN50 ER32 160	160	50	ER32 Ø3-20mm
DIN50 ER40	100	63	ER40 Ø4-26mm
DIN50 ER40 160	160	63	ER40 Ø4-26mm
DIN50 ER50	100	78	ER50 Ø12-34mm

FACE MILL ADAPTORS

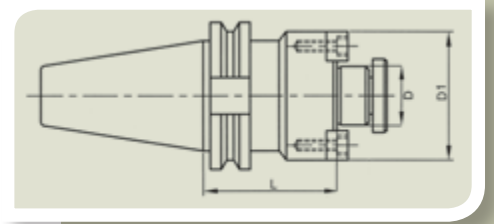
ALINDAN SIKMALI FREZE TUTUCULAR

DIN 69871 (ISO7388-1) - AD&B - Balanced G6.3

CODE / KOD DIN 30	D	D1	L	
DIN30 FM16	16	38	40	
DIN30 FM22	22	48	40	
DIN30 FM27	27	58	40	

CODE / KOD DIN 40	D	D1	L	
DIN40 FM16	16	38	35	
DIN40 FM16 100	16	38	100	
DIN40 FM22	22	48	35	
DIN40 FM22 100	22	48	100	
DIN40 CM22 *	22	40	55	
DIN40 FM27	27	58	40	
DIN40 FM27 100	27	58	100	
DIN40 CM27 *	27	48	55	
DIN40 FM32	32	78	50	
DIN40 FM32 100	32	78	100	
DIN40 CM32 *	32	58	60	
DIN40 FM40	40	88	50	

CODE / KOD DIN 50	D	D1	L	
DIN50 FM16	16	38	35	
DIN50 FM22	22	48	35	
DIN50 FM27	27	58	40	
DIN50 FM32	32	78	50	
DIN50 FM40	40	88	50	



* CM are Combi Type shell mill holders suitable for vertical and horizontal keyway tools.

* CM Kombine tip freze tutucusudur, enine ve boyuna kamalı takımları tutmaya uygundur.

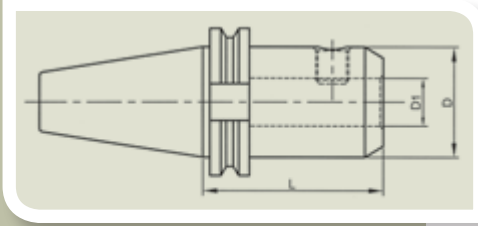
WELDON ADAPTORS WELDON TUTUCULAR

DIN 69871 (ISO7388-1) - AD&B - Balanced G6.3

CODE / KOD DIN 30	D1	D	L
DIN30 W06	6	25	50
DIN30 W08	8	28	50
DIN30 W10	10	35	50
DIN30 W12	12	42	50
DIN30 W16	16	48	63
DIN30 W20	20	52	63

CODE / KOD DIN 40	D1	D	L
DIN40 W06	6	25	50
DIN40 W06 100	6	25	100
DIN40 W08	8	28	50
DIN40 W08 100	8	28	100
DIN40 W10	10	35	50
DIN40 W10 100	10	35	100
DIN40 W12	12	42	50
DIN40 W12 100	12	42	100
DIN40 W14	14	44	50
DIN40 W16	16	48	63
DIN40 W16 100	16	48	100
DIN40 W18	18	50	63
DIN40 W20	20	52	63
DIN40 W20 100	20	52	100
DIN40 W25	25	65	100
DIN40 W32	32	72	100
DIN40 W40	40	80	120

CODE / KOD DIN 50	D1	D	L
DIN50 W06	6	25	63
DIN50 W08	8	28	63
DIN50 W10	10	35	63
DIN50 W12	12	42	63
DIN50 W14	14	44	63
DIN50 W16	16	48	63
DIN50 W18	18	50	63
DIN50 W20	20	52	63
DIN50 W25	25	65	80
DIN50 W32	32	72	100
DIN50 W40	40	80	120



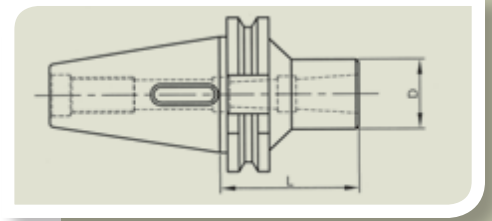
MORSE TAPER ADAPTORS

MORS KONİK TUTUCUSU

DIN 69871 (ISO7388-1) - Balanced G6.3

CODE / KOD DIN 40	MT	D	L	
DIN40 MT1	1	25	50	
DIN40 MT2	2	32	50	
DIN40 MT2 DB *	2	32	50	
DIN40 MT3	3	40	70	
DIN40 MT3 DB *	3	40	70	
DIN40 MT4	4	48	95	
DIN40 MT4 DB *	4	48	95	

CODE / KOD DIN 50	MT	D	L	
DIN50 MT1	1	25	45	
DIN50 MT2	2	32	60	
DIN50 MT3	3	40	65	
DIN50 MT4	4	48	95	
DIN50 MT5	5	63	105	



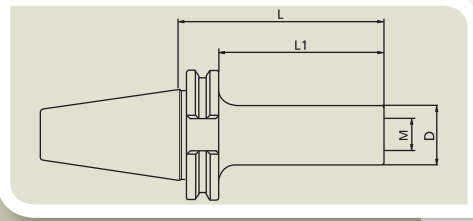
* DB type are drawbar type for holding morse taper shank with screwed end, all others are for tang type morse taper shanks.

* DB tipi çekirme vidalı mors konik saplar içindir, tüm diğerleri çakmalı tip mors konik saplar içindir.

TOOLHOLDER FOR SCREW IN TYPE CUTTERS VİDALI TİP TAKIM TUTUCUSU

DIN 69871 (ISO7388-1) - AD&B - Balanced G6.3

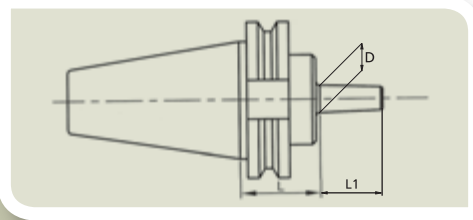
CODE / KOD DIN 40	M	D	L	L1	
DIN40 M12-75	M12	21	75	56	
DIN40 M12-100	M12	21	100	81	
DIN40 M12-130	M12	21	130	111	
DIN40 M16-75	M16	29	75	56	
DIN40 M16-100	M16	29	100	81	
DIN40 M16-130	M16	29	130	111	



DRILL CHUCK ADAPTORS MANDREN TUTUCUSU

DIN 69871 (ISO7388-1)

CODE / KOD DIN 40	D	L	L1	
DIN40 B12	B12	25	18.5	
DIN40 B16	B16	25	24	
DIN40 B18	B18	35	32	

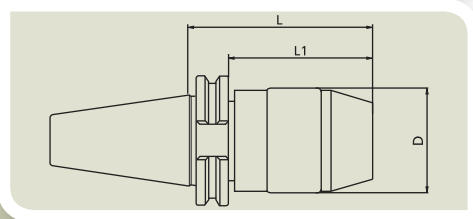


CODE / KOD DIN 50	D	L	L1	
DIN50 B16	B16	25	24	
DIN50 B18	B18	35	32	

DRILL CHUCK HOLDER MANDRENLİ TUTUCU

JIS B 6339 (MAS403 BT)

CODE / KOD DIN 40	Clamping Range	D	L	
DIN40 DC13	1-13mm	48	100	
DIN40 DC16	3-16mm	53	110	





DIN 2080 ISO

TOOLHOLDERS
TAKIM TUTUCULARI

COLLET CHUCKS PENS BAŞLIKLARI

DIN 2080 ISO

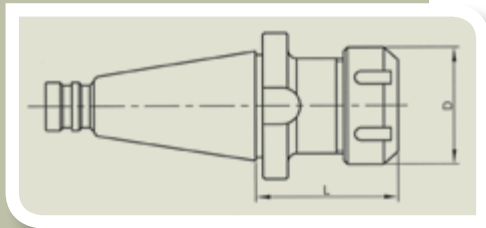
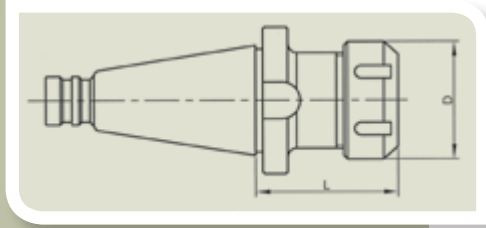
CODE / KOD ISO 30	L	D	collet type and Ø clamping range pens tipi ve Ø sıkma aralığı
ISO30 ER16	50	28	ER16 Ø1-10mm
ISO30 ER25	50	42	ER25 Ø2-16mm
ISO30 ER32	50	50	ER32 Ø3-20mm
ISO30 ER40	60	63	ER40 Ø4-26mm

CODE / KOD ISO 40	L	D	collet type and Ø clamping range pens tipi ve Ø sıkma aralığı
ISO40 ER16	50	28	ER16 Ø1-10mm
ISO40 ER25	60	42	ER25 Ø2-16mm
ISO40 ER32	60	50	ER32 Ø3-20mm
ISO40 ER40	60	63	ER40 Ø4-26mm

CODE / KOD ISO 50	L	D	collet type and Ø clamping range pens tipi ve Ø sıkma aralığı
ISO50 ER32	70	50	ER32 Ø3-20mm
ISO50 ER40	70	63	ER40 Ø4-26mm
ISO50 ER50	90	78	ER50 Ø12-34mm

ISO40 DIN6388-25 Collet Chuck - ISO40 DIN6388-25 Pens Başlığı

CODE / KOD ISO 40	L	D	collet type and Ø clamping range pens tipi ve Ø sıkma aralığı
ISO40 OZ25	70	60	OZ25 Ø2-25mm



FACE MILL ADAPTORS

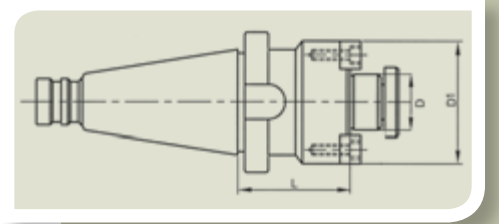
ALINDAN SIKMALI FREZE TUTUCULAR

DIN 2080 ISO

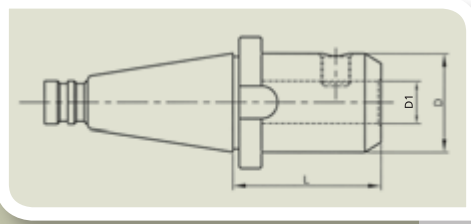
CODE / KOD ISO 30	D	D1	L	
ISO30 FM16	16	38	30	
ISO30 FM22	22	48	30	
ISO30 FM27	27	58	30	

CODE / KOD ISO 40	D	D1	L	
ISO40 FM16	16	38	30	
ISO40 FM22	22	48	30	
ISO40 FM27	27	58	30	
ISO40 FM32	32	78	30	
ISO40 FM40	40	88	30	

CODE / KOD ISO 50	D	D1	L	
ISO50 FM16	16	38	30	
ISO50 FM22	22	48	35	
ISO50 FM27	27	58	35	
ISO50 FM32	32	78	40	
ISO50 FM40	40	88	40	



WELDON ADAPTORS WELDON TUTUCULAR



DIN 2080 ISO

CODE / KOD ISO 30	D1	D	L	
ISO30 W10	10	35	40	
ISO30 W12	12	42	40	
ISO30 W16	16	48	50	
ISO30 W20	20	52	63	

CODE / KOD ISO 40	D1	D	L	
ISO40 W06	6	25	50	
ISO40 W08	8	28	50	
ISO40 W10	10	35	50	
ISO40 W12	12	42	50	
ISO40 W16	16	48	63	
ISO40 W20	20	52	63	
ISO40 W25	25	65	80	
ISO40 W32	32	72	80	
ISO40 W40	40	80	90	

CODE / KOD ISO 50	D1	D	L	
ISO50 W10	10	35	63	
ISO50 W12	12	42	63	
ISO50 W16	16	48	63	
ISO50 W20	20	52	63	
ISO50 W25	25	65	80	
ISO50 W32	32	72	80	
ISO50 W40	40	80	90	

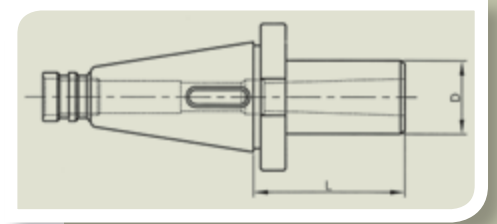
MORSE TAPER ADAPTORS MORS KONİK TUTUCUSU

DIN 2080 ISO

CODE / KOD ISO 40	MT	D	L	
ISO40 MT1	1	25	50	
ISO40 MT2	2	32	50	
ISO40 MT3	3	40	65	
ISO40 MT4	4	48	95	



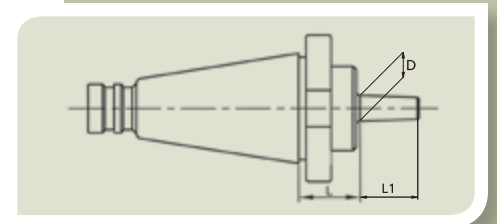
CODE / KOD ISO 50	MT	D	L	
ISO50 MT2	2	32	60	
ISO50 MT3	3	40	65	
ISO50 MT4	4	48	70	
ISO50 MT5	5	63	105	



DRILL CHUCK ADAPTORS MANDREN TUTUCUSU

DIN 2080 ISO

CODE / KOD ISO 40	D	L	L1	
ISO40 B12	B12	15	18.5	
ISO40 B16	B16	17	24	
ISO40 B18	B18	17	32	







**HSK DIN69893 / ISO 12164
MORSE TAPER DIN228
TOOLHOLDERS**

*HSK DIN69893 / ISO 12164
MORS KONİK DIN228
TAKIM TUTUCULAR*

HSK A COLLET HOLDERS DIN69893 / ISO 12164 FORM A

HSK A PENS BAŞLIKLARI DIN69893 / ISO 12164 FORM A

HSK A - Balanced G2.5

CODE / KOD HSK50A	L	D	collet type and Ø clamping range pens tipi ve Ø sıkma aralığı
HSK50A ER16	100	28	ER16 Ø1-10mm
HSK50A ER25	100	42	ER25 Ø2-16mm
HSK50A ER32	100	50	ER32 Ø3-20mm

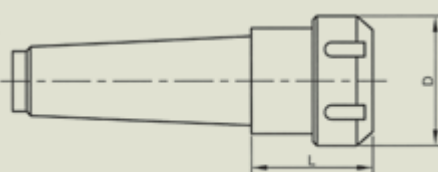
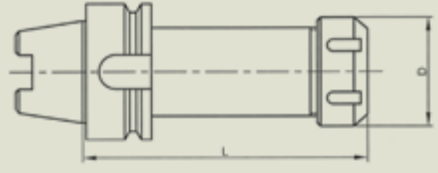
CODE / KOD HSK63A	L	D	collet type and Ø clamping range pens tipi ve Ø sıkma aralığı
HSK63A ER16	100	28	ER16 Ø1-10mm
HSK63A ER25	100	42	ER25 Ø2-16mm
HSK63A ER32	100	50	ER32 Ø3-20mm
HSK63A ER40	100	63	ER40 Ø4-26mm

DIN228 MORSE TAPER SHANK COLLET CHUCKS

DIN228 MORS KONİK SAPLI PENS BAŞLIKLARI

MT DIN228

CODE / KOD MT	L	D	collet type and Ø clamping range pens tipi ve Ø sıkma aralığı
MT2 ER20	50	34	ER20 Ø2-13mm
MT2 ER25	55	42	ER25 Ø2-16mm
MT2 ER32	70	50	ER32 Ø3-20mm
MT3 ER25	55	42	ER25 Ø2-16mm
MT3 ER32	70	50	ER32 Ø3-20mm
MT3 ER40	75	63	ER40 Ø4-26mm
MT4 ER32	70	50	ER32 Ø3-20mm
MT4 ER40	75	63	ER40 Ø4-26mm

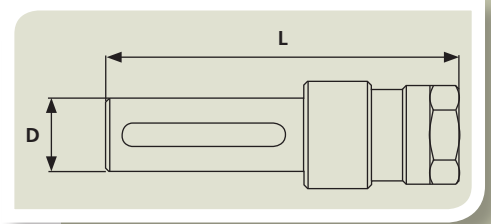


STRAIGHT SHANK TAPPING CHUCK SİLİNDİRİK SAPLI KILAVUZ ADAPTÖRÜ

TAPPING CHUCK / KILAVUZ ADAPTÖRÜ

CODE / KOD	L	D	collet type and Ø clamping range pens tipi ve Ø sıkma aralığı	tapping range kılavuz çekme aralığı
KT16 ER16	115	16	ER16 Ø1-10mm	M2 - M12
KT20 ER20	120	20	ER20 Ø2-13mm	M3 - M16
KT25 ER25	130	25	ER25 Ø2-16mm	M3 - M20

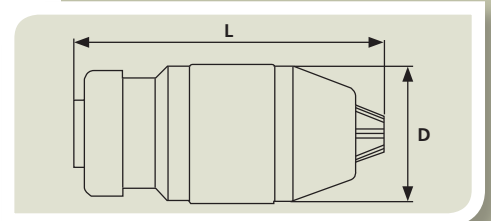
Suitable for ERT and ERTC tapping collets. They can also be used with standard ER collets
ERT ve ERTC kılavuz penslerine uygundur. Normal ER penslerle de kullanılabilir



SELF CENTERING DRILL CHUCK ELLE SIKMA MATKAP MANDRENİ

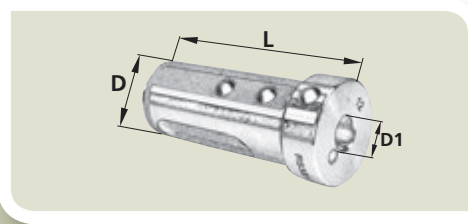
DRILL CHUCK / MATKAP MANDRENİ

CODE / KOD	L	D	clamping range sıkma aralığı	inner rear taper arka konik
DC13B16	105	48	Ø1-13mm	B16
DC16B18	110	53	Ø1-16mm	B18



REDUCTION SLEEVES FOR CNC TURNING MACHINES CNC TORNALAR İÇİN REDÜKSİYON KOVANLAR

REDUCTION SLEEVE / REDÜKSİYON KOVAN

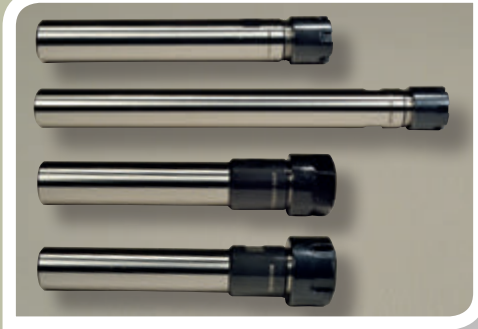


CODE / KOD	D	D1	L	FORM	
RS2508	25	8	63	FORM 1	
RS2510	25	10	63	FORM 1	
RS2512	25	12	63	FORM 2	
RS2516	25	16	63	FORM 2	
RS2520	25	20	63	FORM 2	
RS3208	32	8	89	FORM 1	
RS3210	32	10	89	FORM 1	
RS3212	32	12	89	FORM 1	
RS3216	32	16	89	FORM 1	
RS3220	32	20	89	FORM 2	
RS3225	32	25	89	FORM 2	
RS4008	40	8	100	FORM 1	
RS4010	40	10	100	FORM 1	
RS4012	40	12	100	FORM 1	
RS4016	40	16	100	FORM 1	
RS4020	40	20	100	FORM 1	
RS4025	40	25	100	FORM 2	
RS4032	40	32	100	FORM 2	



STAIHT SHANK COLLET CHUCKS
SİLİNDİRİK SAPLI PENS TUTUCULARI

STRAIGHT SHANK ER COLLET HOLDERS SİLİNDİRİK SAPLI ER PENS TUTUCULARI



Straight shank collet holders have through hole for internal coolant and stop screw inside.

Silindirik saplı pens tutucuları içten soğutma için boya boyalı deliktir ayrıca dayama vidası vardır.

ER8

CODE / KOD	D	D1	L	collet type and Ø clamping range pens tipi ve Ø sıkma aralığı
ER0808085M	8	12	85	ER8 Ø1-5mm
ER0810095M	10	12	95	ER8 Ø1-5mm
ER0812095M	12	12	95	ER8 Ø1-5mm

ER11

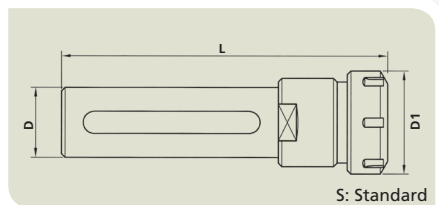
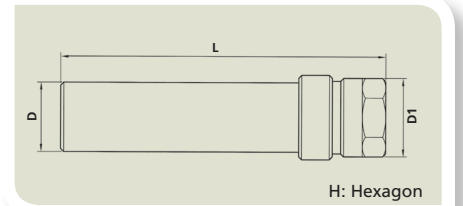
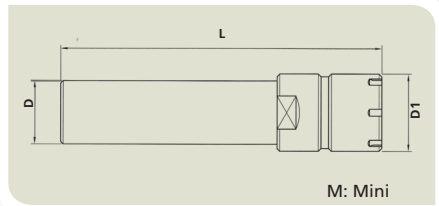
ER1112100M	12	16	100	ER11 Ø1-7mm
ER1116115M	16	16	115	ER11 Ø1-7mm
ER1116165M	16	16	165	ER11 Ø1-7mm
ER1116115H	16	19	115	ER11 Ø1-7mm

ER16

ER1620130M	20	22	130	ER16 Ø1-10mm
ER1620200M	20	22	200	ER16 Ø1-10mm
ER1620130H	20	28	130	ER16 Ø1-10mm
ER1620130S	20	32	130	ER16 Ø1-10mm

ER20

ER2020140M	20	28	140	ER20 Ø2-13mm
ER2020140H	20	34	140	ER20 Ø2-13mm
ER2020140S	20	35	140	ER20 Ø2-13mm
ER2025110H	25	34	110	ER20 Ø2-13mm
ER2025110S	25	35	110	ER20 Ø2-13mm
ER2025200M	25	28	200	ER20 Ø2-13mm



Suffix on the codes specifies the type of locknut
M: with ER Mini locknut
H: with ER Hexagon locknut
S: with ER Standart locknut

Kodun sonundaki harf somun tipini belirtir.
M: ER Mini somunlu
H: ER Altıköşe somunlu
S: ER Standart somunlu

STRAIGHT SHANK ER COLLET HOLDERS SİLİNDİRİK SAPLI ER PENS TUTUCULARI

ER25

CODE / KOD	D	D1	L	collet type and Ø clamping range pens tipi ve Ø sıkma aralığı
ER2520145M	20	35	145	ER25 Ø2-16mm
ER2525145M	25	35	145	ER25 Ø2-16mm
ER2525200M	25	35	200	ER25 Ø2-16mm
ER25254200M	25.4 (1"inch)	35	200	ER25 Ø2-16mm
ER2532110S	32	42	110	ER25 Ø2-16mm



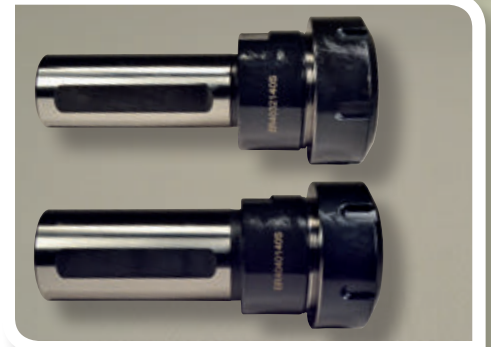
ER32

ER3225110S	25	50	110	ER32 Ø3-20mm
ER3232110S	32	50	110	ER32 Ø3-20mm
ER3240110S	40	50	110	ER32 Ø3-20mm



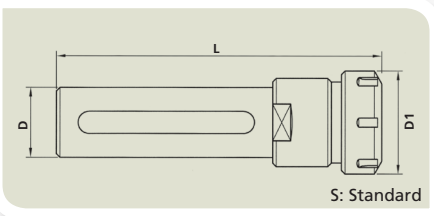
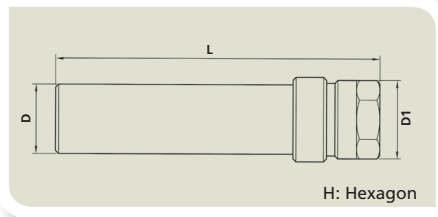
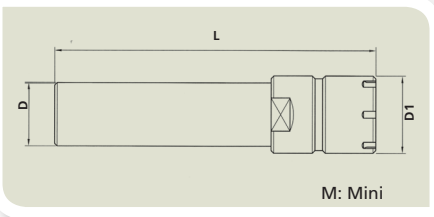
ER40

ER4032140S	32	63	140	ER40 Ø4-26mm
ER4040140S	40	63	140	ER40 Ø4-26mm



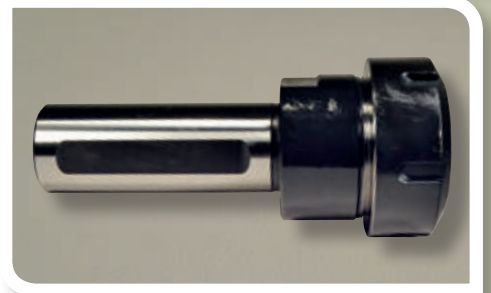
ER50

ER5040165S	40	78	165	ER50 Ø6-40mm
------------	----	----	-----	--------------



Suffix on the codes specifies the type of locknut
M: with ER Mini locknut
H: with ER Hexagon locknut
S: with ER Standart locknut

Kodun sonundaki harf somun tipini belirtir.
M: ER Mini somunlu
H: ER Altıköşe somunlu
S: ER Standart somunlu



Straight shank collet holders have through hole for internal coolant and stop screw inside.

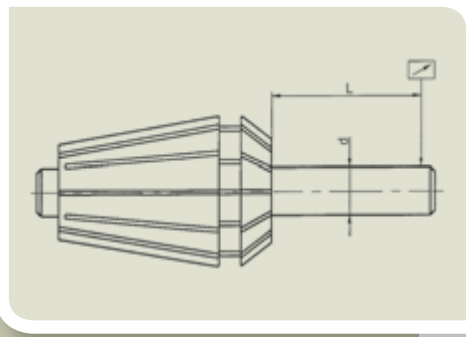
Silindirik saplı pens tutucuları içten soğutma için boydan boya deliktir ayrıca dayama vidası vardır.


PRECISION STANDARDS HASSASİYET STANDARTLARI



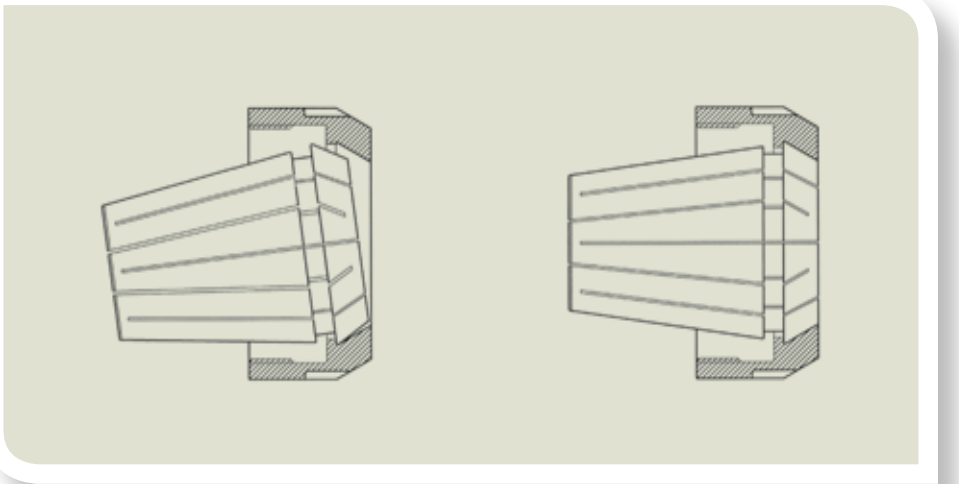
3 different precision levels
3 ayrı hassasiyet sınıfı:

CLASS 2	Precise and economic, according to DIN6499 Class 2 max 15-20 micron run out. <i>Hassas ve ekonomik, DIN 6499 Class 2 standardında max.15-20 mikron salgı.</i>
CLASS 1	Upper precision level according to DIN 6499 Class 1 max. 10 micron run out. <i>Daha Hassas, DIN 6499 Class 1 standardında max.10 mikron salgı.</i>
TOPAC	TOP level ACcuracy with max. run out to 5micron, suitable for very high precision , tight tolerance , high speed applications. <i>Süper Hassas, max 5 mikron salgı. Çok hassas takımlar, dar toleranslı işler, yüksek hızlı işlemeğe uygun.</i>



Ø d	L	DIN 6499 CLASS 2	DIN 6499 CLASS 1	
1 - 1.6	6	0.015	0.010	0.005
1.6 - 3	10	0.015	0.010	0.005
3 - 7	16	0.015	0.010	0.005
7 - 10	25	0.015	0.010	0.005
10 - 18	40	0.020	0.010	0.005
18 - 25	50	0.020	0.010	0.005
25 - 34	60	0.020	0.015	0.010

COLLET MOUNTING INSTRUCTION PENS BAĞLAMA YÖNTEMİ





COLLETS
PENSLER

COLLETS PENSLER



All Gurkan collets

... are 100% run out checked

...are not deformed when clamped to their minimum diameter.

...do not break with small shocks.

... are friendly to your toolholder in term of their smooth surface free of sharp edges and their exact angle geometry to suit the chuck taper and its clamping nut.

Tüm Gürkan pensleri :

% 100 salgı kontrolünden geçmiştir.

Alt çaplarını sıkıldığında deforme olmaz...

Küçük darbelerden kırılmaz.

Çapaksız ve hassas yüzey kalitesi ile tutucunuza zarar vermez ve kusursuz açılal geometrisiyle tutucunuza mükemmel uyum sağlar.

COLLETS PACKAGING / PENS AMBALAJLARI

The different precision levels are distinguished with different colors of caps on the plastic collets boxes.

The bodies of the plastic packs are transparent.

The transparent light blue color bodies are only used for coolant sealed collets.

Belirtilen 3 ayrı hassasiyet grubu penslerin plastik ambalajlarındaki kapak renkleri ile ayrılmaktadır.

Plastik kutuların gövdeleri şeffaftır.

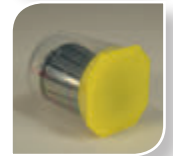
Açık mavi renkli gövdeler sadece sızdırmaz penslerde kullanılmıştır.



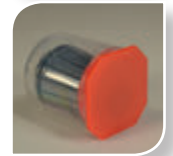
Transparent cap : CLASS 2 (max.15-20 micron run out)
Seffaf kapak : CLASS 2 (max.15-20 mikron salgı)



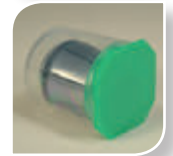
Yellow cap : CLASS 1 (max.10 micron run out)
Sarı Kapak : CLASS 1 (max.10 mikron salgı)



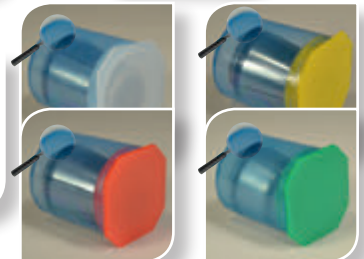
Red cap : TOPAC (max.5 micron run out)
Kırmızı kapak : TOPAC (süper hassas 5 Mikron salgı)



Green cap : only specifies it is a tapping ER collet
Yeşil Kapak : Sadece kılavuz pensi olduğunu belli eder



Light Blue Body : Specifies it is a coolant sealed collet
Açık mavi gövde : Sızdırmaz pens olduğunu belirtir



ER 8 COLLETS ER 8 PENSLER

DIN 6499 / ISO 15488-B

ER 8 CLASS 2

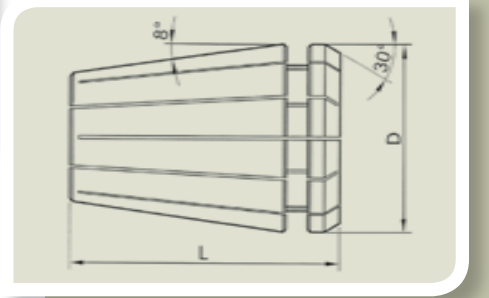
CODE KOD	clamping dia sıkma çapı Ømm	
ER080102	1.0-0.5	
ER080152	1.5-1.0	
ER080202	2.0-1.5	
ER080252	2.5-2.0	
ER080302	3.0-2.5	
ER080352	3.5-3.0	
ER080402	4.0-3.5	
ER080452	4.5-4.0	
ER080502	5.0-4.5	

ER 8 CLASS 1

CODE KOD	clamping dia sıkma çapı Ømm	
ER080101	1.0-0.5	
ER080151	1.5-1.0	
ER080201	2.0-1.5	
ER080251	2.5-2.0	
ER080301	3.0-2.5	
ER080351	3.5-3.0	
ER080401	4.0-3.5	
ER080451	4.5-4.0	
ER080501	5.0-4.5	

ER 8 TOPAC (5 micron)

CODE KOD	clamping dia sıkma çapı Ømm	
ER08010T	1.0-0.5	
ER08015T	1.5-1.0	
ER08020T	2.0-1.5	
ER08025T	2.5-2.0	
ER08030T	3.0-2.5	
ER08035T	3.5-3.0	
ER08040T	4.0-3.5	
ER08045T	4.5-4.0	
ER08050T	5.0-4.5	



D	8.5mm
L	13mm
CLAMPING RANGE TUTMA ARALIĞI	1.0-5.0mm
COLLAPSING CAPACITY TUTMA DARALMA KAPASİTESİ	0.5mm

ER 8 COLLET SETS (Ø1-5mm 9 pcs.) / ER 8 Pens Takımları (Ø1-5mm 9Ad.)

ER 8 COLLET SET CLASS 2

CODE/KOD	content - içeriği
ER08SET2	9pcs ER8 collets Class 2 Ø1-5mm in 0.5mm increment in plastic box 9ad. ER8 pens Class 2 Ø1-5mm arası 0.5mm atlamalı plastik kutuda

ER 8 COLLET SET CLASS 1

CODE/KOD	content - içeriği
ER08SET1	9pcs ER8 collets Class 1 Ø1-5mm in 0.5mm increment in plastic box 9ad. ER8 pens Class 1 Ø1-5mm arası 0.5mm atlamalı plastik kutuda

ER 8 COLLET SET TOPAC (5 micron)

CODE/KOD	content - içeriği
ER08SETT	9pcs ER8 collets TOPAC Ø1-5mm in 0.5mm increment in plastic box 9ad. ER8 pens TOPAC Ø1-5mm arası 0.5mm atlamalı plastik kutuda



ER 11 COLLETS

ER 11 PENSLER

DIN 6499 / ISO 15488-B

ER 11 CLASS 2

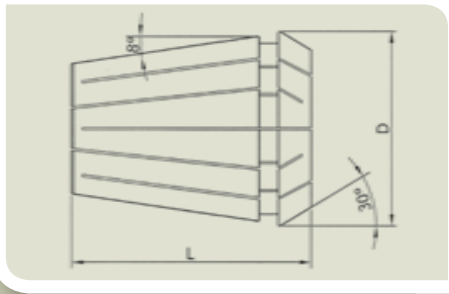
CODE KOD	clamping dia sıkma çapı Ømm	
ER110102	1.0-0.5	
ER110152	1.5-1.0	
ER110202	2.0-1.5	
ER110252	2.5-2.0	
ER110302	3.0-2.5	
ER110352	3.5-3.0	
ER110402	4.0-3.5	
ER110452	4.5-4.0	
ER110502	5.0-4.5	
ER110552	5.5-5.0	
ER110602	6.0-5.5	
ER110652	6.5-6.0	
ER110702	7.0-6.5	
ER110752*	7.5-7.3	
ER110802*	8.0-7.8	

ER 11 CLASS 1

CODE KOD	clamping dia sıkma çapı Ømm	
ER110101	1.0-0.5	
ER110151	1.5-1.0	
ER110201	2.0-1.5	
ER110251	2.5-2.0	
ER110301	3.0-2.5	
ER110351	3.5-3.0	
ER110401	4.0-3.5	
ER110451	4.5-4.0	
ER110501	5.0-4.5	
ER110551	5.5-5.0	
ER110601	6.0-5.5	
ER110651	6.5-6.0	
ER110701	7.0-6.5	
ER110751*	7.5-7.3	
ER110801*	8.0-7.8	

ER 11 TOPAC (5 micron)

CODE KOD	clamping dia sıkma çapı Ømm	
ER11010T	1.0-0.5	
ER11015T	1.5-1.0	
ER11020T	2.0-1.5	
ER11025T	2.5-2.0	
ER11030T	3.0-2.5	
ER11035T	3.5-3.0	
ER11040T	4.0-3.5	
ER11045T	4.5-4.0	
ER11050T	5.0-4.5	
ER11055T	5.5-5.0	
ER11060T	6.0-5.5	
ER11065T	6.5-6.0	
ER11070T	7.0-6.5	
ER11075T*	7.5-7.3	
ER11080T*	8.0-7.8	



D	11.5mm
L	18mm
CLAMPING RANGE TUTMA ARALIĞI	1.0-8.0mm
COLLAPSING CAPACITY TUTMA DARALMA KAPASİTESİ	0.5mm

* Ø>7 (over Ø7mm dia) collets have shorter lengths than standards. Their collapsing capacity is only Ø -0,2mm
 * Ø>7 (Ø7mm üstü çap) penslerin boyu standarttan daha kısadır. Daralma kapasitesi sadece Ø -0,2mm dir.
 Inch sized collets are also available please see its section / İnç ölçü pensler için lütfen ilgili bölüme bakınız.

ER 11 COLLETS ER 11 PENSLER

ER 11 COLLET SETS (Ø1-7mm 13 pcs.) / ER 11 Pens Takımları (Ø1-7mm 13Ad.)

ER 11 COLLET SET CLASS 2

CODE/KOD	content - içeriği
ER11SET2	13pcs ER11 collets Class 2 Ø1-7mm in 0.5mm increment in plastic box 13ad. ER11 pens Class 2 Ø1-7mm arası 0.5mm atlamalı plastik kutuda

ER 11 COLLET SET CLASS 1

CODE/KOD	content - içeriği
ER11SET1	13pcs ER11 collets Class 1 Ø1-7mm in 0.5mm increment in plastic box 13ad. ER11 pens Class 1 Ø1-7mm arası 0.5mm atlamalı plastik kutuda

ER 11 COLLET SET TOPAC (5 micron)

CODE/KOD	content - içeriği
ER11SETT	13pcs ER11 collets TOPAC Ø1-7mm in 0.5mm increment in plastic box 13ad. ER11 pens TOPAC Ø1-7mm arası 0.5mm atlamalı plastik kutuda



ER 16 COLLETS

ER 16 PENSLELER

DIN 6499 / ISO 15488-B

ER 16 CLASS 2

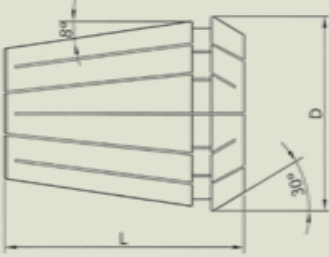
CODE KOD	clamping dia sıkma çapı Ømm	
ER160102	1.0-0.5	
ER160152	1.5-1.0	
ER160202	2.0-1.5	
ER160252	2.5-2.0	
ER160302	3.0-2.5	
ER160352	3.5-2.5	
ER160402	4.0-3.0	
ER160452	4.5-3.5	
ER160502	5.0-4.0	
ER160552	5.5-4.5	
ER160602	6.0-5.0	
ER160652	6.5-5.5	
ER160702	7.0-6.0	
ER160752	7.5-6.5	
ER160802	8.0-7.0	
ER160852	8.5-7.5	
ER160902	9.0-8.0	
ER160952	9.5-8.5	
ER161002	10.0-9.0	
ER161052*	10.5-10.3	
ER161102*	11.0-10.8	
ER161152*	11.5-11.3	
ER161202*	12.0-11.8	

ER 16 CLASS 1

CODE KOD	clamping dia sıkma çapı Ømm	
ER160101	1.0-0.5	
ER160151	1.5-1.0	
ER160201	2.0-1.5	
ER160251	2.5-2.0	
ER160301	3.0-2.5	
ER160351	3.5-2.5	
ER160401	4.0-3.0	
ER160451	4.5-3.5	
ER160501	5.0-4.0	
ER160551	5.5-4.5	
ER160601	6.0-5.0	
ER160651	6.5-5.5	
ER160701	7.0-6.0	
ER160751	7.5-6.5	
ER160801	8.0-7.0	
ER160851	8.5-7.5	
ER160901	9.0-8.0	
ER160951	9.5-8.5	
ER161001	10.0-9.0	
ER161051*	10.5-10.3	
ER161101*	11.0-10.8	
ER161151*	11.5-11.3	
ER161201*	12.0-11.8	

ER 16 TOPAC (5 micron)

CODE KOD	clamping dia sıkma çapı Ømm	
ER16010T	1.0-0.5	
ER16015T	1.5-1.0	
ER16020T	2.0-1.5	
ER16025T	2.5-2.0	
ER16030T	3.0-2.5	
ER16035T	3.5-2.5	
ER16040T	4.0-3.0	
ER16045T	4.5-3.5	
ER16050T	5.0-4.0	
ER16055T	5.5-4.5	
ER16060T	6.0-5.0	
ER16065T	6.5-5.5	
ER16070T	7.0-6.0	
ER16075T	7.5-6.5	
ER16080T	8.0-7.0	
ER16085T	8.5-7.5	
ER16090T	9.0-8.0	
ER16095T	9.5-8.5	
ER16100T	10.0-9.0	
ER16105T*	10.5-10.3	
ER16110T*	11.0-10.8	
ER16115T*	11.5-11.3	
ER16120T*	12.0-11.8	



D	17.0mm
L	27.5mm
CLAMPING RANGE TUTMA ARALIĞI	1.0-12.0mm
COLLAPSING CAPACITY TUTMA DARALMA KAPASİTESİ	1.0mm

* Ø>10 (over Ø10mm dia) collets have shorter lengths than standards. Their collapsing capacity is only Ø -0,2mm
* Ø>10 (Ø10mm üstü çap) penslerin boyu standarttan daha kısadır. Daralma kapasitesi sadece Ø -0,2mm dir.

For Ø1-3mm collets, the collapsing capacity is Ø-0,5mm / Ø1-3mm arası penslerde daralma kapasitesi Ø -0.5 mm dir
Inch sized collets are also available please see its section / İnç ölçü pensler için lütfen ilgili bölüme bakınız.

ER 16 COLLETS ER 16 PENSLER

ER 16 COLLET SETS (Ø1-10mm 10 pcs.) / ER 16 Pens Takımları (Ø1-10mm 10Ad.)

ER 16 COLLET SET CLASS 2

CODE/KOD	content - içeriği
ER16SET2	10pcs ER16 collets Class 2 Ø1-10mm in 1.0mm increment in plastic box 10ad. ER16 pens Class 2 Ø1-10mm arası 1.0mm atlamalı plastik kutuda

ER 16 COLLET SET CLASS 1

CODE/KOD	content - içeriği
ER16SET1	10pcs ER16 collets Class 1 Ø1-10mm in 1.0mm increment in plastic box 10ad. ER16 pens Class 1 Ø1-10mm arası 1.0mm atlamalı plastik kutuda

ER 16 COLLET SET TOPAC (5 micron)

CODE/KOD	content - içeriği
ER16SETT	10pcs ER16 collets TOPAC Ø1-10mm in 1.0mm increment in plastic box 10ad. ER16 pens TOPAC Ø1-10mm arası 1.0mm atlamalı plastik kutuda



ER 20 COLLETS ER 20 PENSLER

DIN 6499 / ISO 15488-B

ER 20 CLASS 2

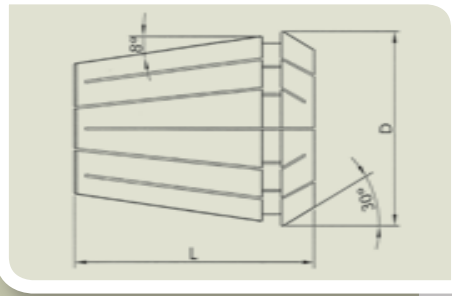
CODE KOD	clamping dia sıkma çapı Ømm	
ER200102	1.0-0.5	
ER200152	1.5-1.0	
ER200202	2.0-1.5	
ER200252	2.5-2.0	
ER200302	3.0-2.5	
ER200352	3.5-2.5	
ER200402	4.0-3.0	
ER200452	4.5-3.5	
ER200502	5.0-4.0	
ER200552	5.5-4.5	
ER200602	6.0-5.0	
ER200652	6.5-5.5	
ER200702	7.0-6.0	
ER200752	7.5-6.5	
ER200802	8.0-7.0	
ER200852	8.5-7.5	
ER200902	9.0-8.0	
ER200952	9.5-8.5	
ER201002	10.0-9.0	
ER201052	10.5-9.5	
ER201102	11.0-10.0	
ER201152	11.5-10.5	
ER201202	12.0-11.0	
ER201252	12.5-11.5	
ER201302	13.0-12.0	
ER201352*	13.5-13.3	
ER201402*	14.0-13.8	
ER201452*	14.5-14.3	
ER201502*	15.0-14.8	
ER201552*	15.5-15.3	
ER201602*	16.0-15.8	

ER 20 CLASS 1

CODE KOD	clamping dia sıkma çapı Ømm	
ER200101	1.0-0.5	
ER200151	1.5-1.0	
ER200201	2.0-1.5	
ER200251	2.5-2.0	
ER200301	3.0-2.5	
ER200351	3.5-2.5	
ER200401	4.0-3.0	
ER200451	4.5-3.5	
ER200501	5.0-4.0	
ER200551	5.5-4.5	
ER200601	6.0-5.0	
ER200651	6.5-5.5	
ER200701	7.0-6.0	
ER200751	7.5-6.5	
ER200801	8.0-7.0	
ER200851	8.5-7.5	
ER200901	9.0-8.0	
ER200951	9.5-8.5	
ER201001	10.0-9.0	
ER201051	10.5-9.5	
ER201101	11.0-10.0	
ER201151	11.5-10.5	
ER201201	12.0-11.0	
ER201251	12.5-11.5	
ER201301	13.0-12.0	
ER201351*	13.5-13.3	
ER201401*	14.0-13.8	
ER201451*	14.5-14.3	
ER201501*	15.0-14.8	
ER201551*	15.5-15.3	
ER201601*	16.0-15.8	

ER 20 TOPAC (5 micron)

CODE KOD	clamping dia sıkma çapı Ømm	
ER20010T	1.0-0.5	
ER20015T	1.5-1.0	
ER20020T	2.0-1.5	
ER20025T	2.5-2.0	
ER20030T	3.0-2.5	
ER20035T	3.5-2.5	
ER20040T	4.0-3.0	
ER20045T	4.5-3.5	
ER20050T	5.0-4.0	
ER20055T	5.5-4.5	
ER20060T	6.0-5.0	
ER20065T	6.5-5.5	
ER20070T	7.0-6.0	
ER20075T	7.5-6.5	
ER20080T	8.0-7.0	
ER20085T	8.5-7.5	
ER20090T	9.0-8.0	
ER20095T	9.5-8.5	
ER20100T	10.0-9.0	
ER20105T	10.5-9.5	
ER20110T	11.0-10.0	
ER20115T	11.5-10.5	
ER20120T	12.0-11.0	
ER20125T	12.5-11.5	
ER20130T	13.0-12.0	
ER20135T*	13.5-13.3	
ER20140T*	14.0-13.8	
ER20145T*	14.5-14.3	
ER20150T*	15.0-14.8	
ER20155T*	15.5-15.3	
ER20160T*	16.0-15.8	



D	21.0mm
L	31.5mm
CLAMPING RANGE TUTMA ARALIĞI	1.0-16.0mm
COLLAPSING CAPACITY TUTMA DARALMA KAPASİTESİ	1.0mm

* Ø>13 (over Ø13mm dia) collets have shorter lengths than standards. Their collapsing capacity is only Ø -0,2mm
* Ø>13 (Ø13mm üstü çap) penslerin boyu standarttan daha kısadır. Daralma kapasitesi sadece Ø -0,2mm dir.

For Ø1-3mm collets, the collapsing capacity is Ø-0,5mm / Ø1-3mm arası penslerde daralma kapasitesi Ø -0.5 mm dir
Inch sized collets are also available please see its section / İnç ölçü pensler için lütfen ilgili bölüme bakınız.

ER 20 COLLETS ER 20 PENSLER

ER 20 COLLET SETS (Ø2-13mm 12pcs.) / ER 20 Pens Takımları (Ø2-13mm 12 Ad.)

ER 20 COLLET SET CLASS 2

CODE/KOD	content - içeriği
ER20SET2	12pcs ER20 collets Class 2 Ø2-13mm in 1.0mm increment in plastic box 12Ad. ER20 pens Class 2 Ø2-13mm arası 1.0mm atlamalı plastik kutuda

ER 20 COLLET SET CLASS 1

CODE/KOD	content - içeriği
ER20SET1	12pcs ER20 collets Class 1 Ø2-13mm in 1.0mm increment in plastic box 12Ad. ER20 pens Class 1 Ø2-13mm arası 1.0mm atlamalı plastik kutuda

ER 20 COLLET SET TOPAC (5 micron)

CODE/KOD	content - içeriği
ER20SETT	12pcs ER20 collets TOPAC Ø2-13mm in 1.0mm increment in plastic box 12Ad. ER20 pens TOPAC Ø2-13mm arası 1.0mm atlamalı plastik kutuda



ER 25 COLLETS

ER 25 PENSLER

DIN 6499 / ISO 15488-B

ER 25 CLASS 2

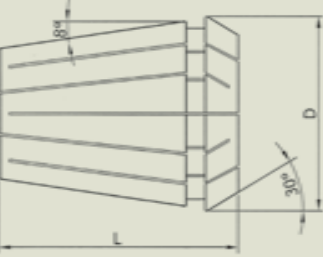
CODE KOD	clamping dia sıkma çapı Ømm	
ER250102	1.0-0.5	
ER250152	1.5-1.0	
ER250202	2.0-1.5	
ER250252	2.5-2.0	
ER250302	3.0-2.5	
ER250352	3.5-2.5	
ER250402	4.0-3.0	
ER250452	4.5-3.5	
ER250502	5.0-4.0	
ER250552	5.5-4.5	
ER250602	6.0-5.0	
ER250652	6.5-5.5	
ER250702	7.0-6.0	
ER250752	7.5-6.5	
ER250802	8.0-7.0	
ER250852	8.5-7.5	
ER250902	9.0-8.0	
ER250952	9.5-8.5	
ER251002	10.0-9.0	
ER251052	10.5-9.5	
ER251102	11.0-10.0	
ER251152	11.5-10.5	
ER251252	12.0-11.0	
ER251252	12.5-11.5	
ER251302	13.0-12.0	
ER251352	13.5-12.5	
ER251402	14.0-13.0	
ER251452	14.5-13.5	
ER251502	15.0-14.0	
ER251552	15.5-14.5	
ER251602	16.0-15.0	
ER251652*	16.5-16.3	
ER251702*	17.0-16.8	
ER251752*	17.5-17.3	
ER251802*	18.0-17.8	
ER251852*	18.5-18.3	
ER251902*	19.0-18.8	
ER251952*	19.5-19.3	
ER252002*	20.0-19.8	

ER 25 CLASS 1

CODE KOD	clamping dia sıkma çapı Ømm	
ER250101	1.0-0.5	
ER250151	1.5-1.0	
ER250201	2.0-1.5	
ER250251	2.5-2.0	
ER250301	3.0-2.5	
ER250351	3.5-2.5	
ER250401	4.0-3.0	
ER250451	4.5-3.5	
ER250501	5.0-4.0	
ER250551	5.5-4.5	
ER250601	6.0-5.0	
ER250651	6.5-5.5	
ER250701	7.0-6.0	
ER250751	7.5-6.5	
ER250801	8.0-7.0	
ER250851	8.5-7.5	
ER250901	9.0-8.0	
ER250951	9.5-8.5	
ER251001	10.0-9.0	
ER251051	10.5-9.5	
ER251101	11.0-10.0	
ER251151	11.5-10.5	
ER251251	12.0-11.0	
ER251251	12.5-11.5	
ER251301	13.0-12.0	
ER251351	13.5-12.5	
ER251401	14.0-13.0	
ER251451	14.5-13.5	
ER251501	15.0-14.0	
ER251551	15.5-14.5	
ER251601	16.0-15.0	
ER251651*	16.5-16.3	
ER251701*	17.0-16.8	
ER251751*	17.5-17.3	
ER251801*	18.0-17.8	
ER251851*	18.5-18.3	
ER251901*	19.0-18.8	
ER251951*	19.5-19.3	
ER252001*	20.0-19.8	

ER 25 TOPAC (5 micron)

CODE KOD	clamping dia sıkma çapı Ømm	
ER25010T	1.0-0.5	
ER25015T	1.5-1.0	
ER25020T	2.0-1.5	
ER25025T	2.5-2.0	
ER25030T	3.0-2.5	
ER25035T	3.5-2.5	
ER25040T	4.0-3.0	
ER25045T	4.5-3.5	
ER25050T	5.0-4.0	
ER25055T	5.5-4.5	
ER25060T	6.0-5.0	
ER25065T	6.5-5.5	
ER25070T	7.0-6.0	
ER25075T	7.5-6.5	
ER25080T	8.0-7.0	
ER25085T	8.5-7.5	
ER25090T	9.0-8.0	
ER25095T	9.5-8.5	
ER25100T	10.0-9.0	
ER25105T	10.5-9.5	
ER25110T	11.0-10.0	
ER25115T	11.5-10.5	
ER25125T	12.0-11.0	
ER25125T	12.5-11.5	
ER25130T	13.0-12.0	
ER25135T	13.5-12.5	
ER25140T	14.0-13.0	
ER25145T	14.5-13.5	
ER25150T	15.0-14.0	
ER25155T	15.5-14.5	
ER25160T	16.0-15.0	
ER25165T*	16.5-16.3	
ER25170T*	17.0-16.8	
ER25175T*	17.5-17.3	
ER25180T*	18.0-17.8	
ER25185T*	18.5-18.3	
ER25190T*	19.0-18.8	
ER25195T*	19.5-19.3	
ER25200T*	20.0-19.8	



D	26.0mm
L	34.0mm
CLAMPING RANGE TUTMA ARALIĞI	1.0-20.0mm
COLLAPSING CAPACITY TUTMA DARALMA KAPASİTESİ	1.0mm

* Ø>16 (over Ø16mm dia) collets have shorter lengths than standards. Their collapsing capacity is only Ø -0,2mm

* Ø>16 (Ø16mm üstü çap) penslerin boyu standarttan daha kısadır. Daralma kapasitesi sadece Ø -0,2mm dir.

For Ø1-3mm collets, the collapsing capacity is Ø-0,5mm / Ø1-3mm arası penslerde daralma kapasitesi Ø -0.5 mm dir
Inch sized collets are also available please see its section / İnç ölçü pensler için lütfen ilgili bölüme bakınız.

ER 25 COLLETS ER 25 PENSLER

ER 25 COLLET SETS (Ø2-16mm 15pcs.) / ER 25 Pens Takımları (Ø2-16mm 15Ad.)

ER 25 COLLET SET CLASS 2

CODE/KOD	content - içeriği
ER25SET2	15pcs ER25 collets Class 2 Ø2-16mm in 1.0mm increment in plastic box 15Ad. ER25 pens Class 2 Ø2-16mm arası 1.0mm atlamalı plastik kutuda

ER 25 COLLET SET CLASS 1

CODE/KOD	content - içeriği
ER25SET1	15pcs ER25 collets Class 1 Ø2-16mm in 1.0mm increment in plastic box 15Ad. ER25 pens Class 1 Ø2-16mm arası 1.0mm atlamalı plastik kutuda

ER 25 COLLET SET TOPAC (5 micron)

CODE/KOD	content - içeriği
ER25SETT	15pcs ER25 collets TOPAC Ø2-16mm in 1.0mm increment in plastic box 15Ad. ER25 pens TOPAC Ø2-16mm arası 1.0mm atlamalı plastik kutuda



ER 32 COLLETS

ER 32 PENSLER

DIN 6499 / ISO 15488-B

ER 32 CLASS 2

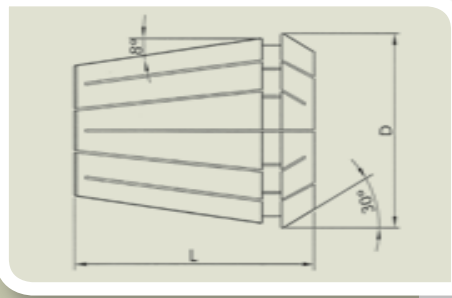
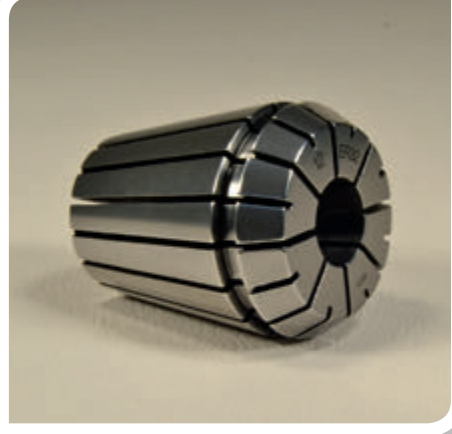
CODE KOD	clamping dia sıkma çapı Ømm	
ER320102	1.0-0.5	
ER320152	1.5-1.0	
ER320202	2.0-1.5	
ER320252	2.5-2.0	
ER320302	3.0-2.5	
ER320352	3.5-2.5	
ER320402	4.0-3.0	
ER320452	4.5-3.5	
ER320502	5.0-4.0	
ER320552	5.5-4.5	
ER320602	6.0-5.0	
ER320652	6.5-5.5	
ER320702	7.0-6.0	
ER320752	7.5-6.5	
ER320802	8.0-7.0	
ER320852	8.5-7.5	
ER320902	9.0-8.0	
ER320952	9.5-8.5	
ER321002	10.0-9.0	
ER321052	10.5-9.5	
ER321102	11.0-10.0	
ER321152	11.5-10.5	
ER321252	12.0-11.0	
ER321252	12.5-11.5	
ER321302	13.0-12.0	
ER321352	13.5-12.5	
ER321402	14.0-13.0	
ER321452	14.5-13.5	
ER321502	15.0-14.0	
ER321552	15.5-14.5	
ER321602	16.0-15.0	
ER321652	16.5-15.5	
ER321702	17.0-16.0	
ER321752	17.5-16.5	
ER321802	18.0-17.0	
ER321852	18.5-17.5	
ER321902	19.0-18.0	
ER321952	19.5-18.5	
ER322002	20.0-19.0	
ER322102*	21.0-20.8	
ER322202*	22.0-21.8	
ER322302*	23.0-22.8	
ER322402*	24.0-23.8	
ER322502*	25.0-24.8	

ER 32 CLASS 1

CODE KOD	clamping dia sıkma çapı Ømm	
ER320101	1.0-0.5	
ER320151	1.5-1.0	
ER320201	2.0-1.5	
ER320251	2.5-2.0	
ER320301	3.0-2.5	
ER320351	3.5-2.5	
ER320401	4.0-3.0	
ER320451	4.5-3.5	
ER320501	5.0-4.0	
ER320551	5.5-4.5	
ER320601	6.0-5.0	
ER320651	6.5-5.5	
ER320701	7.0-6.0	
ER320751	7.5-6.5	
ER320801	8.0-7.0	
ER320851	8.5-7.5	
ER320901	9.0-8.0	
ER320951	9.5-8.5	
ER321001	10.0-9.0	
ER321051	10.5-9.5	
ER321101	11.0-10.0	
ER321151	11.5-10.5	
ER321251	12.0-11.0	
ER321251	12.5-11.5	
ER321301	13.0-12.0	
ER321351	13.5-12.5	
ER321401	14.0-13.0	
ER321451	14.5-13.5	
ER321501	15.0-14.0	
ER321551	15.5-14.5	
ER321601	16.0-15.0	
ER321651	16.5-15.5	
ER321701	17.0-16.0	
ER321751	17.5-16.5	
ER321801	18.0-17.0	
ER321851	18.5-17.5	
ER321901	19.0-18.0	
ER321951	19.5-18.5	
ER322001	20.0-19.0	
ER322101*	21.0-20.8	
ER322201*	22.0-21.8	
ER322301*	23.0-22.8	
ER322401*	24.0-23.8	
ER322501*	25.0-24.8	

ER 32 TOPAC (5 micron)

CODE KOD	clamping dia sıkma çapı Ømm	
ER32010T	1.0-0.5	
ER32015T	1.5-1.0	
ER32020T	2.0-1.5	
ER32025T	2.5-2.0	
ER32030T	3.0-2.5	
ER32035T	3.5-2.5	
ER32040T	4.0-3.0	
ER32045T	4.5-3.5	
ER32050T	5.0-4.0	
ER32055T	5.5-4.5	
ER32060T	6.0-5.0	
ER32065T	6.5-5.5	
ER32070T	7.0-6.0	
ER32075T	7.5-6.5	
ER32080T	8.0-7.0	
ER32085T	8.5-7.5	
ER32090T	9.0-8.0	
ER32095T	9.5-8.5	
ER32100T	10.0-9.0	
ER32105T	10.5-9.5	
ER32110T	11.0-10.0	
ER32115T	11.5-10.5	
ER32125T	12.0-11.0	
ER32125T	12.5-11.5	
ER32130T	13.0-12.0	
ER32135T	13.5-12.5	
ER32140T	14.0-13.0	
ER32145T	14.5-13.5	
ER32150T	15.0-14.0	
ER32155T	15.5-14.5	
ER32160T	16.0-15.0	
ER32165T	16.5-15.5	
ER32170T	17.0-16.0	
ER32175T	17.5-16.5	
ER32180T	18.0-17.0	
ER32185T	18.5-17.5	
ER32190T	19.0-18.0	
ER32195T	19.5-18.5	
ER32200T	20.0-19.0	
ER32210T*	21.0-20.8	
ER32220T*	22.0-21.8	
ER32230T*	23.0-22.8	
ER32240T*	24.0-23.8	
ER32250T*	25.0-24.8	



D	33.0mm
L	40.0mm
CLAMPING RANGE TUTMA ARALIĞI	1.0-25.0mm
COLLAPSING CAPACITY TUTMA DARALMA KAPASİTESİ	1.0mm

* Ø>20 (over Ø20mm dia) collets have shorter lengths than standards. Their collapsing capacity is only Ø -0,2mm
* Ø>20 (Ø20mm üstü çap) penslerin boyu standarttan daha kısadır. Daralma kapasitesi sadece Ø -0,2mm dir.

For Ø1-3mm collets, the collapsing capacity is Ø-0,5mm / Ø1-3mm arası penslerde daralma kapasitesi Ø -0.5 mm dir
Inch sized collets are also available please see its section / İnç ölçü pensler için lütfen ilgili bölüme bakınız.

ER 32 COLLETS ER 32 PENSLER

ER 32 COLLET SETS (Ø3-20mm 18pcs.) / ER 32 Pens Takımları (Ø3-20mm 18Ad.)

ER 32 COLLET SET CLASS 2

CODE/KOD	content - içeriği
ER32SET2	18pcs ER32 collets Class 2 Ø3-20mm in 1.0mm increment in plastic box 18Ad. ER25 pens Class 2 Ø3-20mm arası 1.0mm atlamalı plastik kutuda

ER 32 COLLET SET CLASS 1

CODE/KOD	content - içeriği
ER32SET1	18pcs ER32 collets Class 1 Ø3-20mm in 1.0mm increment in plastic box 18Ad. ER25 pens Class 1 Ø3-20mm arası 1.0mm atlamalı plastik kutuda

ER 32 COLLET SET TOPAC (5 micron)

CODE/KOD	content - içeriği
ER32SETT	18pcs ER32 collets TOPAC Ø3-20mm in 1.0mm increment in plastic box 18Ad. ER25 pens TOPAC Ø3-20mm arası 1.0mm atlamalı plastik kutuda



ER 40 COLLETS

ER 40 PENSLELER

DIN 6499 / ISO 15488-B

ER 40 CLASS 2

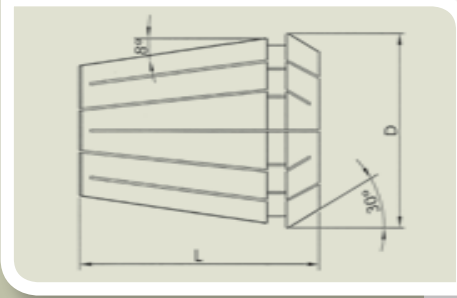
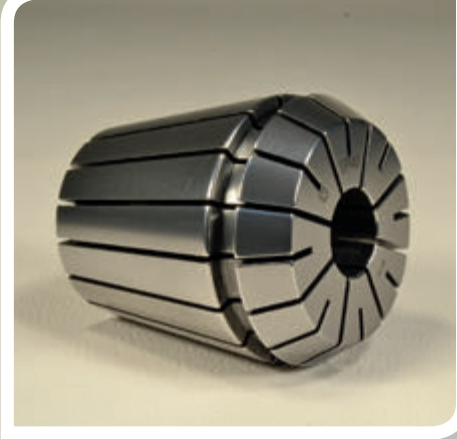
CODE KOD	clamping dia sıkma çapı Ømm	
ER400102	1.0-0.5	
ER400152	1.5-1.0	
ER400202	2.0-1.5	
ER400252	2.5-2.0	
ER400302	3.0-2.5	
ER400352	3.5-2.5	
ER400402	4.0-3.0	
ER400452	4.5-3.5	
ER400502	5.0-4.0	
ER400602	6.0-5.0	
ER400702	7.0-6.0	
ER400802	8.0-7.0	
ER400902	9.0-8.0	
ER401002	10.0-9.0	
ER401102	11.0-10.0	
ER401202	12.0-11.0	
ER401302	13.0-12.0	
ER401402	14.0-13.0	
ER401502	15.0-14.0	
ER401602	16.0-15.0	
ER401702	17.0-16.0	
ER401802	18.0-17.0	
ER401902	19.0-18.0	
ER402002	20.0-19.0	
ER402102	21.0-20.0	
ER402202	22.0-21.0	
ER402302	23.0-22.0	
ER402402	24.0-23.0	
ER402502	25.0-24.0	
ER402602	26.0-25.0	
ER402702*	27.0-26.8	
ER402802*	28.0-27.8	
ER402902*	29.0-28.8	
ER403002*	30.0-29.8	
ER403102*	31.0-30.8	
ER403202*	32.0-31.8	

ER 40 CLASS 1

CODE KOD	clamping dia sıkma çapı Ømm	
ER400101	1.0-0.5	
ER400151	1.5-1.0	
ER400201	2.0-1.5	
ER400251	2.5-2.0	
ER400301	3.0-2.5	
ER400351	3.5-2.5	
ER400401	4.0-3.0	
ER400451	4.5-3.5	
ER400501	5.0-4.0	
ER400601	6.0-5.0	
ER400701	7.0-6.0	
ER400801	8.0-7.0	
ER400901	9.0-8.0	
ER401001	10.0-9.0	
ER401101	11.0-10.0	
ER401201	12.0-11.0	
ER401301	13.0-12.0	
ER401401	14.0-13.0	
ER401501	15.0-14.0	
ER401601	16.0-15.0	
ER401701	17.0-16.0	
ER401801	18.0-17.0	
ER401901	19.0-18.0	
ER402001	20.0-19.0	
ER402101	21.0-20.0	
ER402201	22.0-21.0	
ER402301	23.0-22.0	
ER402401	24.0-23.0	
ER402501	25.0-24.0	
ER402601	26.0-25.0	
ER402701*	27.0-26.8	
ER402801*	28.0-27.8	
ER402901*	29.0-28.8	
ER403001*	30.0-29.8	
ER403101*	31.0-30.8	
ER403201*	32.0-31.8	

ER 40 TOPAC (5 micron)

CODE KOD	clamping dia sıkma çapı Ømm	
ER40010T	1.0-0.5	
ER40015T	1.5-1.0	
ER40020T	2.0-1.5	
ER40025T	2.5-2.0	
ER40030T	3.0-2.5	
ER40035T	3.5-2.5	
ER40040T	4.0-3.0	
ER40045T	4.5-3.5	
ER40050T	5.0-4.0	
ER40060T	6.0-5.0	
ER40070T	7.0-6.0	
ER40080T	8.0-7.0	
ER40090T	9.0-8.0	
ER40100T	10.0-9.0	
ER40110T	11.0-10.0	
ER40120T	12.0-11.0	
ER40130T	13.0-12.0	
ER40140T	14.0-13.0	
ER40150T	15.0-14.0	
ER40160T	16.0-15.0	
ER40170T	17.0-16.0	
ER40180T	18.0-17.0	
ER40190T	19.0-18.0	
ER40200T	20.0-19.0	
ER40210T	21.0-20.0	
ER40220T	22.0-21.0	
ER40230T	23.0-22.0	
ER40240T	24.0-23.0	
ER40250T	25.0-24.0	
ER40260T	26.0-25.0	
ER40270T*	27.0-26.8	
ER40280T*	28.0-27.8	
ER40290T*	29.0-28.8	
ER40300T*	30.0-29.8	
ER40310T*	31.0-30.8	
ER40320T*	32.0-31.8	



D	41.0mm
L	46.0mm
CLAMPING RANGE TUTMA ARALIĞI	1.0-32.0mm
COLLAPSING CAPACITY TUTMA DARALMA KAPASİTESİ	1.0mm

* Ø>26 (over Ø26mm dia) collets have shorter lengths than standards. Their collapsing capacity is only Ø -0,2mm
* Ø>26(Ø26mm üstü çap) penslerin boyu standarttan daha kısadır. Daralma kapasitesi sadece Ø -0,2mm dir.

For Ø1-3mm collets, the collapsing capacity is Ø-0,5mm / Ø1-3mm arası penslerde daralma kapasitesi Ø -0.5 mm dir
Inch sized collets are also available please see its section / İnç ölçü pensler için lütfen ilgili bölüme bakınız.

ER 40 COLLETS ER 40 PENSLER

ER 40 COLLET SETS (Ø4-26mm 23pcs.) / ER 40 Pens Takımları (Ø4-26mm 23Ad.)

ER 40 COLLET SET CLASS 2

CODE/KOD	content - içeriği
ER40SET2	23pcs ER40 collets Class 2 Ø4-26mm in 1.0mm increment in plastic box 23Ad. ER40 pens Class 2 Ø4-26mm arası 1.0mm atlamalı plastik kutuda

ER 40 COLLET SET CLASS 1

CODE/KOD	content - içeriği
ER40SET1	23pcs ER40 collets Class 1 Ø4-26mm in 1.0mm increment in plastic box 23Ad. ER40 pens Class 1 Ø4-26mm arası 1.0mm atlamalı plastik kutuda

ER 40 COLLET SET TOPAC (5 micron)

CODE/KOD	content - içeriği
ER40SETT	23pcs ER40 collets TOPAC Ø4-26mm in 1.0mm increment in plastic box 23Ad. ER40 pens TOPAC Ø4-26mm arası 1.0mm atlamalı plastik kutuda



ER 50 COLLETS

ER 50 PENSLELER

DIN 6499 / ISO 15488-B

ER 50 CLASS 2

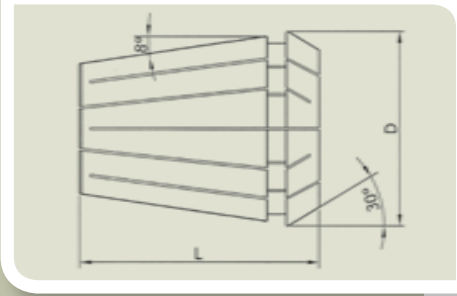
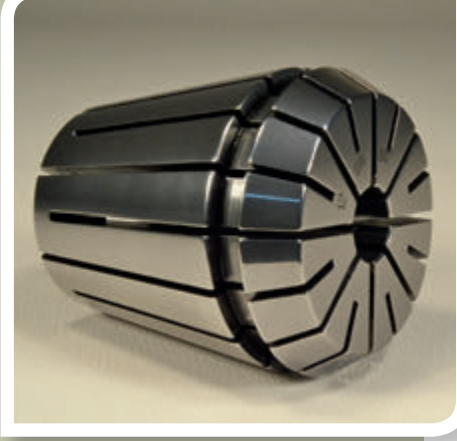
CODE KOD	clamping dia sıkma çapı Ømm	
ER500602	6.0-5.0	
ER500802	8.0-7.0	
ER501002	10.0-9.0	
ER501202	12.0-11.0	
ER501402	14.0-12.0	
ER501602	16.0-14.0	
ER501802	18.0-16.0	
ER502002	20.0-18.0	
ER502202	22.0-20.0	
ER502402	24.0-22.0	
ER502502	25.0-23.0	
ER502602	26.0-24.0	
ER502802	28.0-26.0	
ER503002	30.0-28.0	
ER503202	32.0-30.0	
ER503402	34.0-32.0	
ER503602*	36.0-35.8	
ER503802*	38.0-37.8	
ER504002*	40.0-39.8	

ER 50 CLASS 1

CODE KOD	clamping dia sıkma çapı Ømm	
ER500601	6.0-5.0	
ER500801	8.0-7.0	
ER501001	10.0-9.0	
ER501201	12.0-11.0	
ER501401	14.0-12.0	
ER501601	16.0-14.0	
ER501801	18.0-16.0	
ER502001	20.0-18.0	
ER502201	22.0-20.0	
ER502401	24.0-22.0	
ER502501	25.0-23.0	
ER502601	26.0-24.0	
ER502801	28.0-26.0	
ER503001	30.0-28.0	
ER503201	32.0-30.0	
ER503401	34.0-32.0	
ER503601*	36.0-35.8	
ER503801*	38.0-37.8	
ER504001*	40.0-39.8	

ER 50 TOPAC (5 micron)

CODE KOD	clamping dia sıkma çapı Ømm	
ER50060T	6.0-5.0	
ER50080T	8.0-7.0	
ER50100T	10.0-9.0	
ER50120T	12.0-11.0	
ER50140T	14.0-12.0	
ER50160T	16.0-14.0	
ER50180T	18.0-16.0	
ER50200T	20.0-18.0	
ER50220T	22.0-20.0	
ER50240T	24.0-22.0	
ER50250T	25.0-23.0	
ER50260T	26.0-24.0	
ER50280T	28.0-26.0	
ER50300T	30.0-28.0	
ER50320T	32.0-30.0	
ER50340T	34.0-32.0	
ER50360T*	36.0-35.8	
ER50380T*	38.0-37.8	
ER50400T*	40.0-39.8	



D	52.0mm
L	60.0mm
CLAMPING RANGE TUTMA ARALIĞI	6.0-40.0mm
COLLAPSING CAPACITY TUTMA DARALMA KAPASİTESİ	2.0mm

ER 50 COLLETS ER 50 PENSLER

ER 50 COLLET SETS (Ø12-34mm 12pcs.) / ER 50 Pens Takımları (Ø12-34mm 12Ad.)

ER 50 COLLET SET CLASS 2

CODE/KOD	content - içeriği
ER50SET2	12pcs ER50 collets Class 2 Ø12-34mm in 2.0mm increment in plastic box 12Ad. ER50 pens Class 2 Ø12-34mm arası 2.0mm atlamalı plastik kutuda

ER 50 COLLET SET CLASS 1

CODE/KOD	content - içeriği
ER50SET1	12pcs ER50 collets Class 1 Ø12-34mm in 2.0mm increment in plastic box 12Ad. ER50 pens Class 1 Ø12-34mm arası 2.0mm atlamalı plastik kutuda

ER 50 COLLET SET TOPAC (5 micron)

CODE/KOD	content - içeriği
ER50SETT	12pcs ER50 collets TOPAC Ø12-34mm in 2.0mm increment in plastic box 12Ad. ER50 pens TOPAC Ø12-34mm arası 2.0mm atlamalı plastik kutuda



Normally ER50 sets do not contain 25 mm collet. It can be included in the set instead of 26mm if requested when ordering.
Normalde ER50 pens takımlarında 25mm pens yoktur. Bu pens sipariş esnasında istendiğinde 26mm nin yerine takıma konulabilir.





**COOLANT SEALED ER COLLETS
TAPPING ER COLLETS
INCH SIZES ER COLLETS
DIN 6388 / ISO10897-B (OZ25) COLLETS**

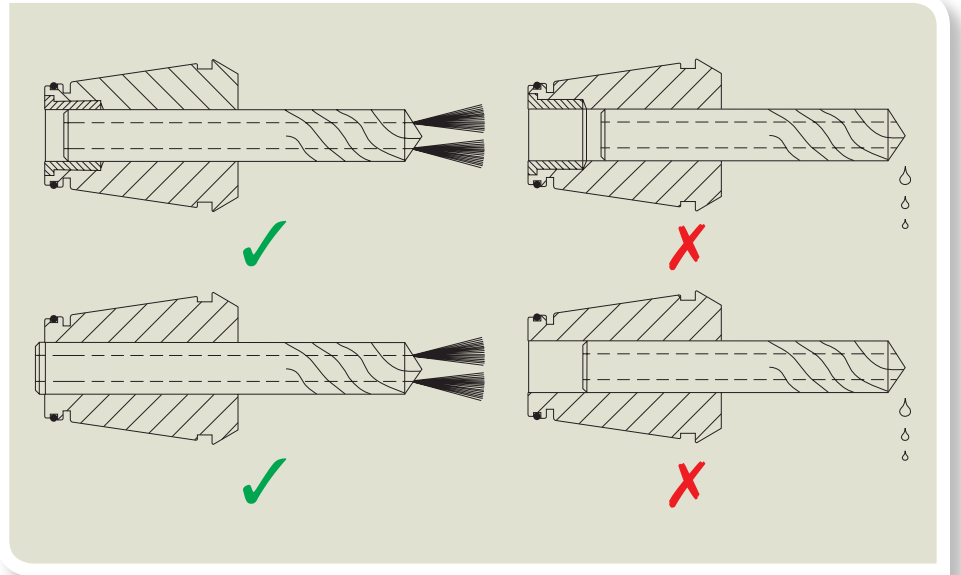
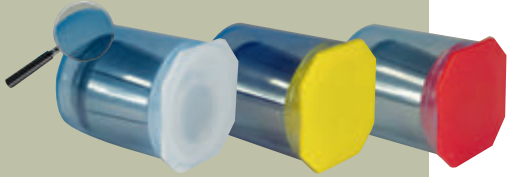
***SIZDIRMAZ ER PENSLER
ER KILAVUZ PENSLERİ
İNÇ ÖLÇÜ ER PENSLER
DIN 6388 / ISO10897-B (OZ25) PENSLER***

COOLANT SEALED ER COLLETS (For internal coolant tools) SIZDIRMAZ ER PENSLER (içten soğutmalı takım için)



Coolant Sealed performance is only achieved when clamped the nominal diameter. The shank should be inserted till the back end of the collet as shown in the instruction. May collapse down 0.2mm but will have leakage when holding undersize. Suitable for all kinds of ER collet holders. May also be used as standard ER collet for the nominal diameter cutters without internal coolant. Less flexible with harder structure compared with standard ER collets. Other sizes are available on request.

*Sızdırmaz özelliği sadece kendi çapını sıkıldığında geçerlidir.
Takım sapı pensin arkasına kadar sokulmalıdır.
0.2mm daralma yapabilir, ancak alt ölçüyü sıkarken sızdırır.
Her türlü ER pens tutucusuna uygundur.
Nominal çapta standart pens olarak ta kullanılabilir.
Daha sert gövde yapısıyla standart ER penslere göre daha az esnektir.
Diğer çaplar şipariş yapılabilir.*



COOLANT SEALED ER COLLETS (For internal coolant tools) DIN 6499 / ISO 15488
SIZDIRMAZ ER PENSLELER (içten soğutmalı takımalar için) Pat. Nr. 2012 07739

ERC11 COOLANT SEALED COLLETS
ERC11 SIZDIRMAZ PENSLELER

CLASS 2

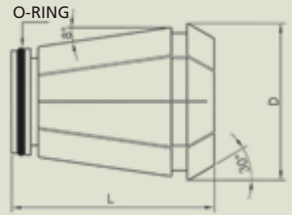
CODE / KOD	clamping dia sıkma çapı Ømm	
ERC110302	3	
ERC110402	4	
ERC110502	5	
ERC110602	6	

CLASS 1

CODE / KOD	clamping dia sıkma çapı Ømm	
ERC110301	3	
ERC110401	4	
ERC110501	5	
ERC110601	6	

TOPAC

CODE / KOD	clamping dia sıkma çapı Ømm	
ERC11030T	3	
ERC11040T	4	
ERC11050T	5	
ERC11060T	6	



ERC11 COOLANT SEALED COLLET SETS
ERC11 SIZDIRMAZ PENS TAKIMLARI

ERC11 COOLANT SEALED COLLET SET CLASS 2

CODE/KOD	content - içeriği
ERC11SET2	4pcs ERC11 Collant sealed collets Class 2 Ø3-6mm in 1.0mm increment in plastic box 4ad. ERC11 sızdırmaz pens Class 2 Ø3-6mm arası 1.0mm atlamalı plastik kutuda

ERC11 COOLANT SEALED COLLET SET CLASS 1

CODE/KOD	content - içeriği
ERC11SET1	4pcs ERC11 Collant sealed collets Class 1 Ø3-6mm in 1.0mm increment in plastic box 4ad. ERC11 sızdırmaz pens Class 1 Ø3-6mm arası 1.0mm atlamalı plastik kutuda

ERC11 COOLANT SEALED COLLET SET TOPAC

CODE/KOD	content - içeriği
ERC11SETT	4pcs ERC11 Collant sealed collets TOPAC Ø3-6mm in 1.0mm increment in plastic box 4ad. ERC11 sızdırmaz pens TOPAC Ø3-6mm arası 1.0mm atlamalı plastik kutuda



ERC16 COOLANT SEALED COLLETS
ERC16 SIZDIRMAZ PENSLELER

CLASS 2

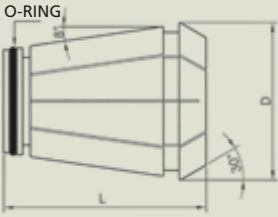
CODE / KOD	clamping dia sıkma çapı Ømm	
ERC160302	3	
ERC160402	4	
ERC160502	5	
ERC160602	6	
ERC160702	7	
ERC160802	8	
ERC160902	9	
ERC161002	10	

CLASS 1

CODE / KOD	clamping dia sıkma çapı Ømm	
ERC160301	3	
ERC160401	4	
ERC160501	5	
ERC160601	6	
ERC160701	7	
ERC160801	8	
ERC160901	9	
ERC161001	10	

TOPAC

CODE / KOD	clamping dia sıkma çapı Ømm	
ERC16030T	3	
ERC16040T	4	
ERC16050T	5	
ERC16060T	6	
ERC16070T	7	
ERC16080T	8	
ERC16090T	9	
ERC16100T	10	



ERC16 COOLANT SEALED COLLET SETS
ERC16 SIZDIRMAZ PENS TAKIMLARI

ERC16 COOLANT SEALED COLLET SET CLASS 2

CODE/KOD	content - içeriği
ERC16SET2	8pcs ERC16 Collant sealed collets Class 2 Ø3-10mm in 1.0mm increment in plastic box 8ad. ERC16 sızdırmaz pens Class 2 Ø3-10mm arası 1.0mm atlamalı plastik kutuda

ERC16 COOLANT SEALED COLLET SET CLASS 1

CODE/KOD	content - içeriği
ERC16SET1	8pcs ERC16 Collant sealed collets Class 1 Ø3-10mm in 1.0mm increment in plastic box 8ad. ERC16 sızdırmaz pens Class 1 Ø3-10mm arası 1.0mm atlamalı plastik kutuda

ERC16 COOLANT SEALED COLLET SET TOPAC

CODE/KOD	content - içeriği
ERC16SETT	8pcs ERC16 Collant sealed collets TOPAC Ø3-10mm in 1.0mm increment in plastic box 8ad. ERC16 sızdırmaz pens TOPAC Ø3-10mm arası 1.0mm atlamalı plastik kutuda

COOLANT SEALED ER COLLETS (For internal coolant tools) DIN 6499 / ISO 15488
SIZDIRMAZ ER PENSLER (içten soğutmalı takımlar için) Pat. Nr. 2012 07739

ERC20 COOLANT SEALED COLLETS
ERC20 SIZDIRMAZ PENSLER

CLASS 2

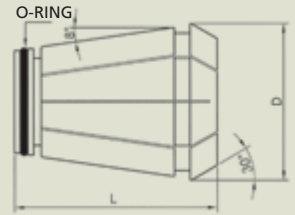
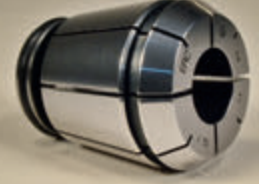
CODE / KOD	clamping dia sıkma çapı Ømm	
ERC200302	3	
ERC200402	4	
ERC200502	5	
ERC200602	6	
ERC200702	7	
ERC200802	8	
ERC200902	9	
ERC201002	10	
ERC201102	11	
ERC201202	12	
ERC201302	13	

CLASS 1

CODE / KOD	clamping dia sıkma çapı Ømm	
ERC200301	3	
ERC200401	4	
ERC200501	5	
ERC200601	6	
ERC200701	7	
ERC200801	8	
ERC200901	9	
ERC201001	10	
ERC201101	11	
ERC201201	12	
ERC201301	13	

TOPAC

CODE / KOD	clamping dia sıkma çapı Ømm	
ERC20030T	3	
ERC20040T	4	
ERC20050T	5	
ERC20060T	6	
ERC20070T	7	
ERC20080T	8	
ERC20090T	9	
ERC20100T	10	
ERC20110T	11	
ERC20120T	12	
ERC20130T	13	



ERC20 COOLANT SEALED COLLET SETS
ERC20 SIZDIRMAZ PENS TAKIMLARI

ERC20 COOLANT SEALED COLLET SET CLASS 2

CODE/KOD	content - içeriği
ERC20SET2	11pcs ERC20 Collant sealed collets Class 2 Ø3-13mm in 1.0mm increment in plastic box 11ad. ERC20 sızdırmaz pens Class 2 Ø3-13mm arası 1.0mm atlamalı plastik kutuda

ERC20 COOLANT SEALED COLLET SET CLASS 1

CODE/KOD	content - içeriği
ERC20SET1	11pcs ERC20 Collant sealed collets Class 1 Ø3-13mm in 1.0mm increment in plastic box 11ad. ERC20 sızdırmaz pens Class 1 Ø3-13mm arası 1.0mm atlamalı plastik kutuda

ERC20 COOLANT SEALED COLLET SET TOPAC

CODE/KOD	content - içeriği
ERC20SETT	11pcs ERC20 Collant sealed collets TOPAC Ø3-13mm in 1.0mm increment in plastic box 11ad. ERC20 sızdırmaz pens TOPAC Ø3-13mm arası 1.0mm atlamalı plastik kutuda



ERC25 COOLANT SEALED COLLETS
ERC25 SIZDIRMAZ PENSLELER

CLASS 2

CODE / KOD	clamping dia sıkma çapı Ømm	
ERC250302	3	
ERC250402	4	
ERC250502	5	
ERC250602	6	
ERC250702	7	
ERC250802	8	
ERC250902	9	
ERC251002	10	
ERC251102	11	
ERC251202	12	
ERC251302	13	
ERC251402	14	
ERC251502	15	
ERC251602	16	

CLASS 1

CODE / KOD	clamping dia sıkma çapı Ømm	
ERC250301	3	
ERC250401	4	
ERC250501	5	
ERC250601	6	
ERC250701	7	
ERC250801	8	
ERC250901	9	
ERC251001	10	
ERC251101	11	
ERC251201	12	
ERC251301	13	
ERC251401	14	
ERC251501	15	
ERC251601	16	

TOPAC

CODE / KOD	clamping dia sıkma çapı Ømm	
ERC25030T	3	
ERC25040T	4	
ERC25050T	5	
ERC25060T	6	
ERC25070T	7	
ERC25080T	8	
ERC25090T	9	
ERC25100T	10	
ERC25110T	11	
ERC25120T	12	
ERC25130T	13	
ERC25140T	14	
ERC25150T	15	
ERC25160T	16	

ERC25 COOLANT SEALED COLLET SETS
ERC25 SIZDIRMAZ PENS TAKIMLARI

ERC25 COOLANT SEALED COLLET SET CLASS 2

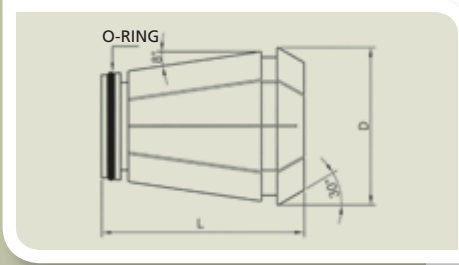
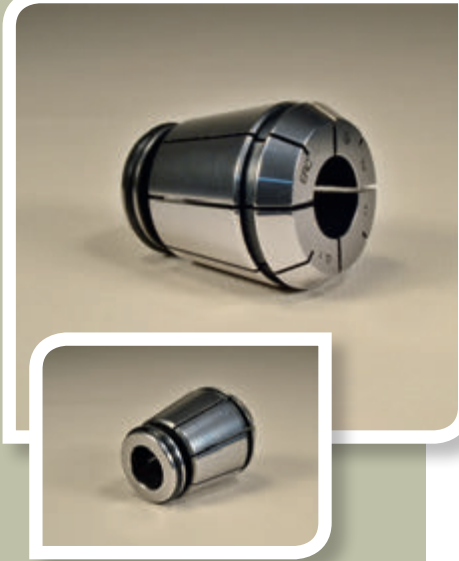
CODE/KOD	content - içeriği
ERC25SET2	14pcs ERC25 Coolant sealed collets Class 2 Ø3-16mm in 1.0mm increment in plastic box 14Ad. ERC25 sızdırmaz pens Class 2 Ø3-16mm arası 1.0mm atlamalı plastik kutuda

ERC25 COOLANT SEALED COLLET SET CLASS 1

CODE/KOD	content - içeriği
ERC25SET1	14pcs ERC25 Coolant sealed collets Class 1 Ø3-16mm in 1.0mm increment in plastic box 14Ad. ERC25 sızdırmaz pens Class 1 Ø3-16mm arası 1.0mm atlamalı plastik kutuda

ERC25 COOLANT SEALED COLLET SET TOPAC

CODE/KOD	content - içeriği
ERC25SETT	14pcs ERC25 Coolant sealed collets TOPAC Ø3-16mm in 1.0mm increment in plastic box 14Ad. ERC25 sızdırmaz pens TOPAC Ø3-16mm arası 1.0mm atlamalı plastik kutuda



COOLANT SEALED ER COLLETS (For internal coolant tools) DIN 6499 / ISO 15488
SIZDIRMAZ ER PENSLELER (içten soğutmalı takımlar için) Pat. Nr. 2012 07739

ERC32 COOLANT SEALED COLLETS
ERC32 SIZDIRMAZ PENSLELER

CLASS 2

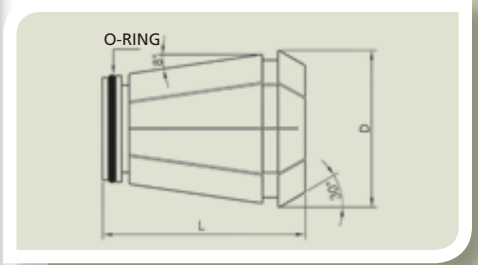
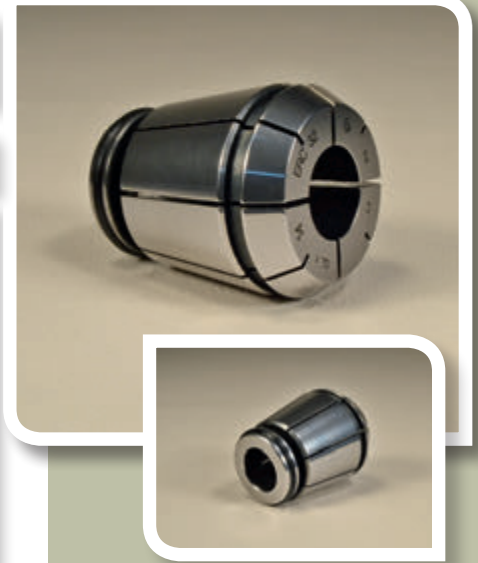
CODE / KOD	clamping dia sıkma çapı Ømm	
ERC320302	3	
ERC320402	4	
ERC320502	5	
ERC320602	6	
ERC320702	7	
ERC320802	8	
ERC320902	9	
ERC321002	10	
ERC321102	11	
ERC321202	12	
ERC321302	13	
ERC321402	14	
ERC321502	15	
ERC321602	16	
ERC321702	17	
ERC321802	18	
ERC321902	19	
ERC322002	20	

CLASS 1

CODE / KOD	clamping dia sıkma çapı Ømm	
ERC320301	3	
ERC320401	4	
ERC320501	5	
ERC320601	6	
ERC320701	7	
ERC320801	8	
ERC320901	9	
ERC321001	10	
ERC321101	11	
ERC321201	12	
ERC321301	13	
ERC321401	14	
ERC321501	15	
ERC321601	16	
ERC321701	17	
ERC321801	18	
ERC321901	19	
ERC322001	20	

TOPAC

CODE / KOD	clamping dia sıkma çapı Ømm	
ERC32030T	3	
ERC32040T	4	
ERC32050T	5	
ERC32060T	6	
ERC32070T	7	
ERC32080T	8	
ERC32090T	9	
ERC32100T	10	
ERC32110T	11	
ERC32120T	12	
ERC32130T	13	
ERC32140T	14	
ERC32150T	15	
ERC32160T	16	
ERC32170T	17	
ERC32180T	18	
ERC32190T	19	
ERC32200T	20	



ERC32 COOLANT SEALED COLLET SETS
ERC32 SIZDIRMAZ PENS TAKIMLARI

ERC32 COOLANT SEALED COLLET SET CLASS 2

CODE/KOD	content - içeriği
ERC32SET2	18pcs ERC32 Coolant sealed collets Class 2 Ø3-20mm in 1.0mm increment in plastic box 18Ad. ERC32 sızdırmaz pens Class 2 Ø3-20m arası 1.0mm atlamalı plastik kutuda

ERC32 COOLANT SEALED COLLET SET CLASS 1

CODE/KOD	content - içeriği
ERC32SET1	18pcs ERC32 Coolant sealed collets Class 1 Ø3-20mm in 1.0mm increment in plastic box 18Ad. ERC32 sızdırmaz pens Class 1 Ø3-20m arası 1.0mm atlamalı plastik kutuda

ERC32 COOLANT SEALED COLLET SET TOPAC

CODE/KOD	content - içeriği
ERC32SETT	18pcs ERC32 Coolant sealed collets TOPAC Ø3-20mm in 1.0mm increment in plastic box 18Ad. ERC32 sızdırmaz pens TOPAC Ø3-20m arası 1.0mm atlamalı plastik kutuda



ERC40 COOLANT SEALED COLLETS
ERC40 SIZDIRMAZ PENSLER

CLASS 2

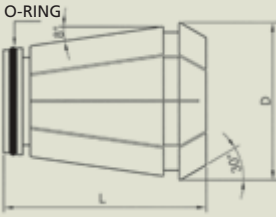
CODE KOD	clamping dia sıkma çapı Ømm	
ERC400302	3	
ERC400402	4	
ERC400502	5	
ERC400602	6	
ERC400702	7	
ERC400802	8	
ERC400902	9	
ERC401002	10	
ERC401102	11	
ERC401202	12	
ERC401302	13	
ERC401402	14	
ERC401502	15	
ERC401602	16	
ERC401702	17	
ERC401802	18	
ERC401902	19	
ERC402002	20	
ERC402102*	21	
ERC402202*	22	
ERC402302*	23	
ERC402402*	24	
ERC402502	25	
ERC402602*	26	

CLASS 1

CODE KOD	clamping dia sıkma çapı Ømm	
ERC400301	3	
ERC400401	4	
ERC400501	5	
ERC400601	6	
ERC400701	7	
ERC400801	8	
ERC400901	9	
ERC401001	10	
ERC401101	11	
ERC401201	12	
ERC401301	13	
ERC401401	14	
ERC401501	15	
ERC401601	16	
ERC401701	17	
ERC401801	18	
ERC401901	19	
ERC402001	20	
ERC402101*	21	
ERC402201*	22	
ERC402301*	23	
ERC402401*	24	
ERC402501	25	
ERC402601*	26	

TOPAC

CODE KOD	clamping dia sıkma çapı Ømm	
ERC40030T	3	
ERC40040T	4	
ERC40050T	5	
ERC40060T	6	
ERC40070T	7	
ERC40080T	8	
ERC40090T	9	
ERC40100T	10	
ERC40110T	11	
ERC40120T	12	
ERC40130T	13	
ERC40140T	14	
ERC40150T	15	
ERC40160T	16	
ERC40170T	17	
ERC40180T	18	
ERC40190T	19	
ERC40200T	20	
ERC40210T*	21	
ERC40220T*	22	
ERC40230T*	23	
ERC40240T*	24	
ERC40250T	25	
ERC40260T*	26	



ERC40 COOLANT SEALED COLLET SETS
ERC40 SIZDIRMAZ PENSLER TAKIMLARI

ERC40 COOLANT SEALED COLLET SET CLASS 2

CODE/KOD	content - içeriği
ERC40SET2	19pcs ERC40 Coolant sealed collets Class 2 Ø3-25mm in plastic box 19Ad. ERC40 sızdırmaz pens Class 2 Ø3-25m arası plastik kutuda

ERC40 COOLANT SEALED COLLET SET CLASS 1

CODE/KOD	content - içeriği
ERC40SET1	19pcs ERC40 Coolant sealed collets Class 1 Ø3-25mm in plastic box 19Ad. ERC40 sızdırmaz pens Class 1 Ø3-25m arası plastik kutuda

ERC40 COOLANT SEALED COLLET SET TOPAC

CODE/KOD	content - içeriği
ERC40SETT	19pcs ERC40 Coolant sealed collets TOPAC Ø3-25mm in plastic box 19Ad. ERC40 sızdırmaz pens TOPAC Ø3-25m arası plastik kutuda

* These sizes are not included in the sets / * Bu ölçüler setin içinde yoktur.

COOLANT SEALED ER COLLETS (For internal coolant tools) DIN 6499 / ISO 15488
SIZDIRMAZ ER PENSLELER (içten soğutmalı takımlar için) Pat. Nr. 2012 07739

ERC50 COOLANT SEALED COLLETS
ERC50 SIZDIRMAZ PENSLELER

CLASS 2

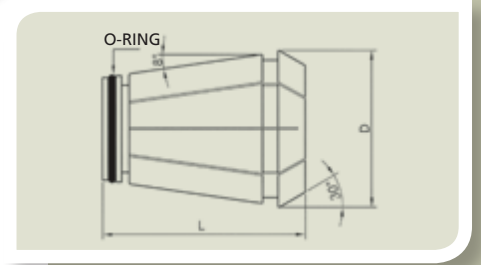
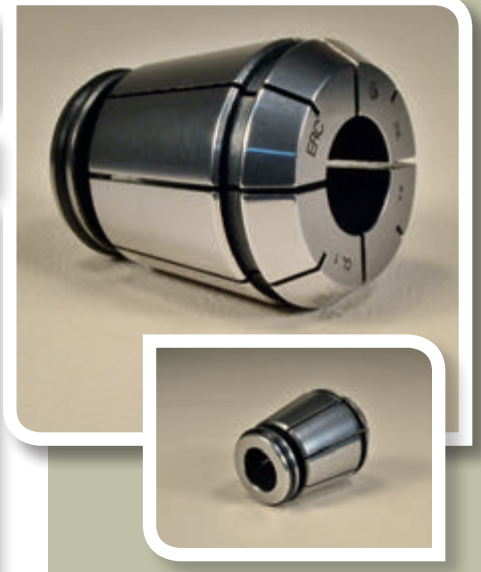
CODE KOD	clamping dia sıkma çapı Ømm	
ERC501202	12	
ERC501402	14	
ERC501602	16	
ERC501802	18	
ERC502002	20	
ERC502502	25	
ERC503202	32	

CLASS 1

CODE KOD	clamping dia sıkma çapı Ømm	
ERC501201	12	
ERC501401	14	
ERC501601	16	
ERC501801	18	
ERC502001	20	
ERC502501	25	
ERC503201	32	

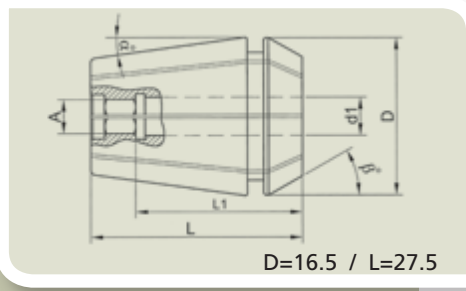
TOPAC

CODE KOD	clamping dia sıkma çapı Ømm	
ERC50120T	12	
ERC50140T	14	
ERC50160T	16	
ERC50180T	18	
ERC50200T	20	
ERC50250T	25	
ERC50320T	32	



ERT16

CODE / KOD	d1	square size kare ölçüsü □ mm	Tap Specs* - Kılavuz detayı*
ERT16028	2.8	2.1	DIN371 M2-M2,5 - DIN376 M4
ERT16035	3.5	2.7	DIN371 M3 - DIN376 M5
ERT16040	4	3.15/3.2	ISO M4/M5 - JIS M3/M3.5
ERT16045	4.5	3.4	DIN371 M4 - DIN376 M6
ERT16050	5	4	ISO M5 - JIS M4
ERT16055	5.5	4.3	DIN374/376 M7
ERT16060	6	4.9	DIN371 M4,5/M5/M6 DIN374/376 M8
ERT16063	6.3	5	ISO M6-M8-1/4"-5/16"
ERT16070	7	5.5	DIN371 M7 DIN374/376 M9-M10 JIS M9-M10
ERT16080	8	6.2/6.3	DIN371 M8 ISO M8 - M10 - 7/16" - 5/16"



ERT 16 TAPPING ER COLLET SET / ERT 16 KILAVUZ PENSi TAKIMI

CODE / KOD	content - içeriği
ERT16SET	10 pcs ERT16 tapping ER collets, suitable for taps with shank Ø2.8-8.0, in plastic box. 10 adet ERT16 kılavuz pensi, Ø2.8-8.0 saplı kılavuzlara uygun, plastik kutuda



* Tap specs indicated are some of the suitable sizes only. Tapping ER collets are all made to CL1 (Class 1 - 10 Micron) Precision Standard. They are packed with green cap.

* Belirtilen kılavuz detaylarında uygun ölçülerin sadece bir kısmı belirtilmiştir. Tüm kılavuz pensleri CL1 (Class 1 - 10 Micron) hassasiyet sınıfına göre üretilmiştir. Ambalajları yeşil kapalıdır.

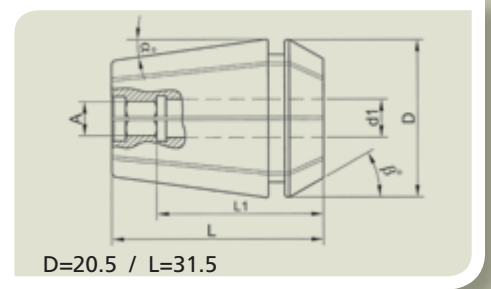
TAPPING ER COLLETS ER KILAVUZ PENSLERİ

DIN 6499 / ISO 15488

ERT20

CODE / KOD	d1	square size kare ölçüsü □ mm	Tap Specs* - Klavuz detayı*
ERT20035	3.5	2.7	DIN371 M3 - DIN376 M5
ERT20040	4	3.15/3.2	ISO M4/M5 - JIS M3/M3.5
ERT20045	4.5	3.4	DIN371 M4 - DIN376 M6
ERT20050**	5**	4	ISO M5 - JIS M4
ERT20055	5.5	4.3	DIN374/376 M7
ERT20060	6	4.9	DIN371 M4,5/M5/M6 DIN374/376 M8
ERT20063	6.3	5	ISO M6-M8-1/4"-5/16"
ERT20070	7	5.5	DIN371 M7 DIN374/376 M9-M10 JIS M9-M10
ERT20080	8	6.2/6.3	DIN371 M8 ISO M8 - M10 - 7/16" - 5/16"
ERT20090	9	7.0/7.1	DIN 374/376 M12 ISO M12 - 1/2"
ERT20100	10	8	DIN371 M10 ISO M10 - 3/8"
ERT20110	11	9	DIN 374/376 M14 - 9/16"
ERT20120	12	9	DIN 374/376 M16 - 5/8"

** This item is not included in the set / Bu ürün setin içinde yoktur .



ERT 20 TAPPING ER COLLET SET / ERT 20 KILAVUZ PENSI TAKIMI

CODE / KOD	content - içeriği
ERT20SET	12 pcs ERT20 tapping ER collets, suitable for taps with shank Ø3.5-12.0, in plastic box 12 adet ERT20 kılavuz pensi, Ø3.5-12.0 saplı kılavuzlara uygun, plastik kutuda



* Tap specs indicated are some of the suitable sizes only.
Tapping ER collets are all made to CL1 (Class 1 - 10 Micron) Precision Standard.
They are packed with green cap.

* Belirtilen kılavuz detaylarında uygun ölçülerin sadece bir kısmı belirtilmiştir.
Tüm kılavuz pensleri CL1 (Class 1 - 10 Micron) hassasiyet sınıfına göre üretilmiştir.
Ambalajları yeşil kapaklıdır.



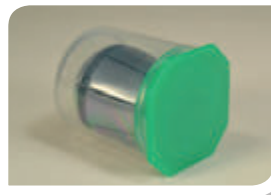
ERT25

CODE / KOD	d1	square size kare ölçüsü □ mm	Tap Specs* - Klavuz detayı*
ERT25035	3.5	2.7	DIN371 M3 - DIN376 M5
ERT25040	4	3.15/3.2	ISO M4/M5 - JIS M3/M3.5
ERT25045	4.5	3.4	DIN371 M4 - DIN376 M6
ERT25050	5	4	ISO M5 - JIS M4
ERT25055	5.5	4.3	DIN374/376 M7
ERT25060	6	4.9	DIN371 M4,5/M5/M6 DIN374/376 M8
ERT25063	6.3	5	ISO M6-M8-1/4" -5/16"
ERT25070	7	5.5	DIN371 M7 DIN374/376 M9-M10 JIS M9-M10
ERT25080	8	6.2/6.3	DIN371 M8 ISO M8 - M10 - 7/16" - 5/16"
ERT25090	9	7.0/7.1	DIN 374/376 M12 ISO M12 - 1/2"
ERT25100	10	8	DIN371 M10 ISO M10 - 3/8"
ERT25110	11	9	DIN 374/376 M14 - 9/16"
ERT25120	12	9	DIN 374/376 M16 - 5/8"
ERT25125**	12.5	10	ISO M16 - 5/8" JIS M16
ERT25140	14	11.0/11.2	DIN 374/376 M18 - JIS M18 ISO M18/M20 3/4"
ERT25160	16	12	DIN 374/376 M20

** This item is not included in the set / Bu ürün setin içinde yoktur

ERT 25 TAPPING ER COLLET SET / ERT 25 KILAVUZ PENSi TAKIMI

CODE / KOD	content - içeriği
ERT25SET	15 pcs ERT25 tapping ER collets, suitable for taps with shank Ø3.5-16.0, in plastic box 15 adet ERT25 klavuz pensi, Ø3.5-16.0 saplı klavuzlara uygun, plastik kutuda



* Tap specs indicated are some of the suitable sizes only. Tapping ER collets are all made to CL1 (Class 1 - 10 Micron) Precision Standard. They are packed with green cap.

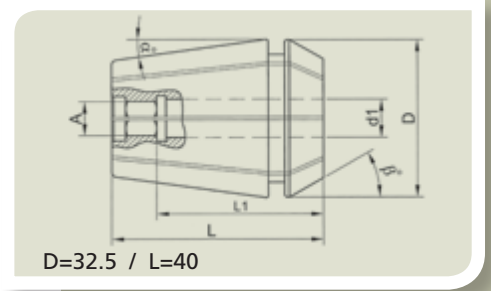
* Belirtilen klavuz detaylarında uygun ölçülerin sadece bir kısmı belirtilmiştir. Tüm klavuz pensleri CL1 (Class 1 - 10 Micron) hassasiyet sınıfına göre üretilmiştir. Ambalajları yeşil kapalıdır.

TAPPING ER COLLETS ER KILAVUZ PENSLERİ

DIN 6499 / ISO 15488

ERT32

CODE / KOD	d1	square size kare ölçüsü □ mm	Tap Specs* - Klavuz detayı*
ERT32035	3.5	2.7	DIN371 M3 - DIN376 M5
ERT32040	4	3.15/3.2	ISO M4/M5 - JIS M3/M3.5
ERT32045	4.5	3.4	DIN371 M4 - DIN376 M6
ERT32050	5	4	ISO M5 - JIS M4
ERT32055	5.5	4.3	DIN374/376 M7
ERT32060	6	4.9	DIN371 M4,5/M5/M6 DIN374/376 M8
ERT32063	6.3	5	ISO M6-M8-1/4" -5/16"
ERT32070	7	5.5	DIN371 M7 DIN374/376 M9-M10 JIS M9-M10
ERT32080	8	6.2/6.3	DIN371 M8 ISO M8 - M10 - 7/16" - 5/16"
ERT32090	9	7.0/7.1	DIN 374/376 M12 ISO M12 - 1/2"
ERT32100	10	8	DIN371 M10 ISO M10 - 3/8"
ERT32110	11	9	DIN 374/376 M14 - 9/16"
ERT32120	12	9	DIN 374/376 M16 - 5/8"
ERT32125	12.5	10	ISO M16 - 5/8" JIS M16
ERT32140	14	11.0/11.2	DIN 374/376 M18 - JIS M18 ISO M18-M20 3/4"
ERT32160	16	12	DIN 374/376 M20
ERT32180	18	14.0/14.5	DIN 374/376 M22- M24 -7/8" ISO M24 - 1"
ERT32200	20	16	DIN 374/376 M27 - 1" ISO M27-M30 - 1 1/8"



ERT 32 TAPPING ER COLLET SET / ERT 32 KILAVUZ PENSI TAKIMI

CODE / KOD	content - içeriği
ERT32SET	18 pcs ERT32 tapping ER collets, suitable for taps with shank Ø3.5-20.0, in plastic box 18 adet ERT32 kılavuz pensi, Ø3.5-20.0 saplı kılavuzlara uygun, plastik kutuda



* Tap specs indicated are some of the suitable sizes only.
Tapping ER collets are all made to CL1 (Class 1 - 10 Micron) Precision Standard.
They are packed with green cap.

* Belirtilen kılavuz detaylarında uygun ölçülerin sadece bir kısmı belirtilmiştir.
Tüm kılavuz pensleri CL1 (Class 1 - 10 Micron) hassasiyet sınıfına göre üretilmiştir.
Ambalajları yeşil kapaklıdır.



ERT40

CODE / KOD	d1	square size kare ölçüsü □ mm	Tap Specs* - Klavuz detayı*
ERT40040	4	3.15/3.2	ISO M4/M5 - JIS M3/M3.5
ERT40045	4.5	3.4	DIN371 M4 - DIN376 M6
ERT40050	5	4	ISO M5 - JIS M4
ERT40055	5.5	4.3	DIN374/376 M7
ERT40060	6	4.9	DIN371 M4,5/M5/M6 DIN374/376 M8
ERT40063	6.3	5	ISO M6-M8-1/4"-5/16"
ERT40070	7	5.5	DIN371 M7 DIN374/376 M9-M10 JIS M9-M10
ERT40080	8	6.2/6.3	DIN371 M8 ISO M8 - M10 - 7/16 - 5/16"
ERT40090	9	7.0/7.1	DIN 374/376 M12 ISO M12 - 1/2"
ERT40100	10	8	DIN371 M10 ISO M10 - 3/8"
ERT40110	11	9	DIN 374/376 M14 - 9/16"
ERT40120	12	9	DIN 374/376 M16 - 5/8"
ERT40125	12.5	10	ISO M16 - 5/8 JIS M16
ERT40140	14	11.0/11.2	DIN 374/376 M18 - JIS M18 ISO M18/M20 3/4"
ERT40160	16	12	DIN 374/376 M20
ERT40180	18	14.0/14.5	DIN 374/376 M22- M24 - 7/8" ISO M24 - 1"
ERT40200	20	16	DIN 374/376 M27 - 1" ISO M27-M30 - 1 1/8"
ERT40220	22	18	DIN 374/376 M30 - 1 1/8"
ERT40250	25	20	DIN 374/376 M33 - 1 1/4" ISO M36

ERT 40 TAPPING ER COLLET SET / ERT 40 KILAVUZ PENSi TAKIMI

CODE / KOD	content - içeriği
ERT40SET	19 pcs ERT40 tapping ER collets, suitable for taps with shank Ø4.0-25.0, in plastic box 19 adet ERT40 kılavuz pensi, Ø4.0-25.0 saplı kılavuzlara uygun, plastik kutuda



* Tap specs indicated are some of the suitable sizes only. Tapping ER collets are all made to CL1 (Class 1 - 10 Micron) Precision Standard. They are packed with green cap.

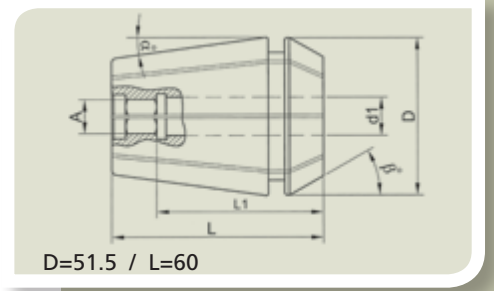
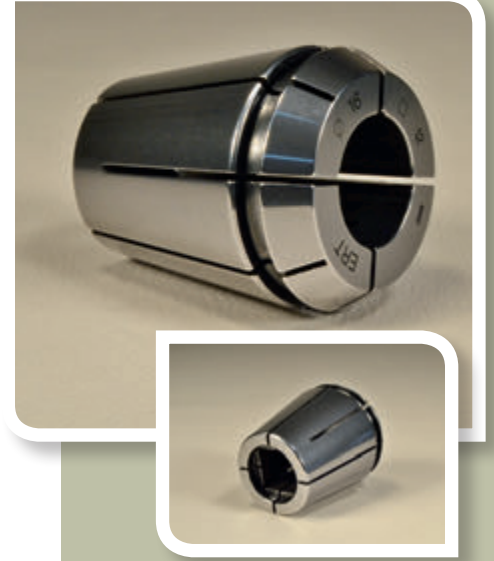
* Belirtilen kılavuz detaylarında uygun ölçülerin sadece bir kısmı belirtilmiştir. Tüm kılavuz pensleri CL1 (Class 1 - 10 Micron) hassasiyet sınıfına göre üretilmiştir. Ambalajları yeşil kapalıdır.

TAPPING ER COLLETS ER KILAVUZ PENSLERİ

DIN 6499 / ISO 15488

ERT50

CODE / KOD	d1	square size kare ölçüsü □ mm	Tap Specs* - Klavuz detayı*
ERT50160	16	12	DIN 374/376 M20
ERT50180	18	14.0/14.5	DIN 374/376 M22- M24 -7/8" ISO M24 - 1"
ERT50200	20	16	DIN 374/376 M27 - 1" ISO M27-M30 - 1 1/8"
ERT50220	22	18	DIN 374/376 M30 - 1 1/8"
ERT50250	25	20	DIN 374/376 M33 - 1 1/4" ISO M36
ERT50280	28	22	DIN 374/376 M36 - 1 3/8" -1 1/2"
ERT50320	32	24	DIN 374/376 M39-M42 - 1 1/2"



* Tap specs indicated are some of the suitable sizes only.
Tapping ER collets are all made to CL1 (Class 1 - 10 Micron) Precision Standard.
They are packed with green cap.

* Belirtilen klavuz detaylarında uygun ölçülerin sadece bir kısmı belirtilmiştir.
Tüm klavuz pensleri CL1 (Class 1 - 10 Micron) hassasiyet sınıfına göre üretilmiştir.
Ambalajları yeşil kapaklıdır.



ERTC COOLANT SEALED TAPPING COLLETS For internal coolant taps ERTC SIZDIRMAZ KILAVUZ PENSLERİ İçten soğutmalı kılavuzlar için

DIN 6499 / ISO 15488 / Pat. Nr. 2012 07739

ERTC16

CODE / KOD	d1	square size kare ölçüsü □ mm	Tap Specs* - Klavuz detayı*
ERTC16045	4.5	3.4	DIN371 M4 - DIN376 M6
ERTC16060	6	4.9	DIN371 M4,5/M5/M6 DIN374/376 M8
ERTC16080	8	6.2/6.3	DIN371 M8 ISO M8 - M10 - 7/16" - 5/16"

ERTC20

CODE / KOD	d1	square size kare ölçüsü □ mm	Tap Specs* - Klavuz detayı*
ERTC20045	4.5	3.4	DIN371 M4 - DIN376 M6
ERTC20060	6	4.9	DIN371 M4,5/M5/M6 DIN374/376 M8
ERTC20080	8	6.2/6.3	DIN371 M8 ISO M8 - M10 - 7/16" - 5/16"
ERTC20090	9	7.0/7.1	DIN 374/376 M12 ISO M12 - 1/2"
ERTC20100	10	8	DIN371 M10 ISO M10 - 3/8"
ERTC20110	11	9	DIN 374/376 M14 - 9/16"
ERTC20120	12	9	DIN 374/376 M16 - 5/8"

ERTC25

CODE / KOD	d1	square size kare ölçüsü □ mm	Tap Specs* - Klavuz detayı*
ERTC25060	6	4.9	DIN371 M4,5/M5/M6 DIN374/376 M8
ERTC25080	8	6.2/6.3	DIN371 M8 ISO M8 - M10 - 7/16" - 5/16"
ERTC25090	9	7.0/7.1	DIN 374/376 M12 ISO M12 - 1/2"
ERTC25100	10	8	DIN371 M10 ISO M10 - 3/8"
ERTC25110	11	9	DIN 374/376 M14 - 9/16"
ERTC25120	12	9	DIN 374/376 M16 - 5/8"
ERTC25140	14	11.0/11.2	DIN 374/376 M18 - JIS M18 ISO M18/M20 3/4"
ERTC25160	16	12	DIN 374/376 M20

* Tap specs indicated are some of the suitable sizes only.
Coolant sealed Tapping ER collets are all made to CL1 (Class 1 - 10 Micron) Precision Standard They are packed with green cap and the body is transparent blue

* Belirtilen kılavuz detaylarında uygun ölçülerin sadece bir kısmı belirtilmiştir
Tüm sızdırmaz kılavuz pensleri CL1 (Class 1 - 10 Micron) hassasiyet sınıfına göre üretilmiştir.
Ambalajlarının kapağı yeşil, gövdesi saydam mavidir.



ERTC COOLANT SEALED TAPPING COLLETS For internal coolant taps ERTC SIZDIRMAZ KILAVUZ PENSLERİ İçten soğutmalı kılavuzlar için

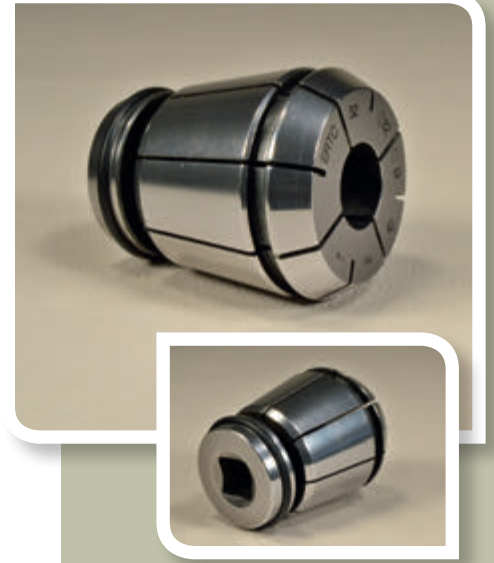
DIN 6499 / ISO 15488 / Pat. Nr. 2012 07739

ERTC32

CODE / KOD	d1	square size kare ölçüsü □ mm	Tap Specs* - Klavuz detayı*
ERTC32060	6	4.9	DIN371 M4,5/M5/M6 DIN374/376 M8
ERTC32080	8	6.2/6.3	DIN371 M8 ISO M8 - M10 - 7/16" - 5/16"
ERTC32090	9	7.0/7.1	DIN 374/376 M12 ISO M12 - 1/2"
ERTC32100	10	8	DIN371 M10 ISO M10 - 3/8"
ERTC32110	11	9	DIN 374/376 M14 - 9/16"
ERTC32120	12	9	DIN 374/376 M16 - 5/8"
ERTC32140	14	11.0/11.2	DIN 374/376 M18 - JIS M18 ISO M18-M20 3/4"
ERTC32160	16	12	DIN 374/376 M20
ERTC32180	18	14.0/14.5	DIN 374/376 M22- M24 -7/8" ISO M24 - 1"
ERTC32200	20	16	DIN 374/376 M27 - 1" ISO M27-M30 - 1 1/8"

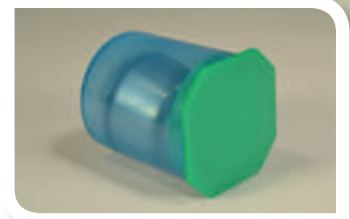
ERTC40

CODE / KOD	d1	square size kare ölçüsü □ mm	Tap Specs* - Klavuz detayı*
ERTC40060	6	4.9	DIN371 M4,5/M5/M6 DIN374/376 M8
ERTC40080	8	6.2/6.3	DIN371 M8 ISO M8 - M10 - 7/16" - 5/16"
ERTC40090	9	7.0/7.1	DIN 374/376 M12 ISO M12 - 1/2"
ERTC40100	10	8	DIN371 M10 ISO M10 - 3/8"
ERTC40110	11	9	DIN 374/376 M14 - 9/16"
ERTC40120	12	9	DIN 374/376 M16 - 5/8"
ERTC40140	14	11.0/11.2	DIN 374/376 M18 - JIS M18 ISO M18-M20 3/4"
ERTC40160	16	12	DIN 374/376 M20
ERTC40180	18	14.0/14.5	DIN 374/376 M22- M24 -7/8" ISO M24 - 1"
ERTC40200	20	16	DIN 374/376 M27 - 1" ISO M27-M30 - 1 1/8"
ERTC40220	22	18	DIN 374/376 M30 - 1 1/8"
ERTC40250	25	20	DIN 374/376 M33 - 1 1/4" ISO M36



* Tap specs indicated are some of the suitable sizes only.
Coolant sealed Tapping ER collets are all made to CL1 (Class 1 - 10 Micron) Precision Standard They are packed with green cap and the body is transparent blue

* Belirtilen kılavuz detaylarında uygun ölçülerin sadece bir kısmı belirtilmiştir
Tüm sızdırmaz kılavuz pensleri CL1 (Class 1 - 10 Micron) hassasiyet sınıfına göre üretilmiştir. Ambalajlarının kapağı yeşil, gövdesi saydam mavidir.



INCH SIZED ER COLLETS İNÇ ÖLÇÜ ER PENSLER

DIN 6499 / ISO 15488-B

ER8 INCH SIZED COLLETS / ER8 İNÇ ÖLÇÜ PENSLER

ER8	CLASS 2		CLASS 1		TOPAC	
clamping dia sıkma çapı Ømm	CODE / KOD		CODE / KOD		CODE / KOD	
1/16"	ER0801592		ER0801591		ER080159T	
1/8"	ER0803182		ER0803181		ER080318T	
3/16"	ER0804762		ER0804761		ER080476T	

ER11 INCH SIZED COLLETS / ER11 İNÇ ÖLÇÜ PENSLER

ER11	CLASS 2		CLASS 1		TOPAC	
clamping dia sıkma çapı Ømm	CODE / KOD		CODE / KOD		CODE / KOD	
1/16"	ER1101592		ER1101591		ER110159T	
1/8"	ER1103182		ER1103181		ER110318T	
3/16"	ER1104762		ER1104761		ER110476T	
1/4"	ER1106352		ER1106351		ER110635T	

INCH SIZED ER COLLETS İNÇ ÖLÇÜ ER PENSLER

DIN 6499 / ISO 15488-B

ER16 INCH SIZED COLLETS / ER16 İNÇ ÖLÇÜ PENSLER

ER16	CLASS 2		CLASS 1		TOPAC	
clamping dia sıkma çapı Ømm	CODE / KOD		CODE / KOD		CODE / KOD	
1/16"	ER1601592		ER1601591		ER160159T	
1/8"	ER1603182		ER1603181		ER160318T	
3/16"	ER1604762		ER1604761		ER160476T	
1/4"	ER1606352		ER1606351		ER160635T	
5/16"	ER1607942		ER1607941		ER160794T	
3/8"	ER1609532		ER1609531		ER160953T	



ER16 INCH SIZED COLLETS SETS / ER16 İNÇ ÖLÇÜ PENS TAKIMLARI

ER16 INCH COLLET SET CLASS 2

CODE/KOD	content - içeriği
ER16SETIN2	6pcs ER16 Inch sized collets Class 2 Ø1/16"-3/8" in plastic box 6Ad. ER16 İnç ölçü pens Class 2 Ø1/16"-3/8" arası plastik kutuda

ER16 INCH COLLET SET CLASS 1

CODE/KOD	content - içeriği
ER16SETIN1	6pcs ER16 Inch sized collets Class 1 Ø1/16"-3/8" in plastic box 6Ad. ER16 İnç ölçü pens Class 1 Ø1/16"-3/8" arası plastik kutuda

ER16 INCH COLLET SET TOPAC (5 micron)

CODE/KOD	content - içeriği
ER16SETINT	6pcs ER16 Inch sized collets TOPAC Ø1/16"-3/8" in plastic box 6Ad. ER16 İnç ölçü pens TOPAC Ø1/16"-3/8" arası plastik kutuda



ER20 INCH SIZED COLLETS / ER20 İNÇ ÖLÇÜ PENSLER

ER20	CLASS 2		CLASS 1		TOPAC	
clamping dia sıkma çapı Ømm	CODE / KOD		CODE / KOD		CODE / KOD	
1/16"	ER2001592		ER2001591		ER200159T	
1/8"	ER2003182		ER2003181		ER200318T	
3/16"	ER2004762		ER2004761		ER200476T	
1/4"	ER2006352		ER2006351		ER200635T	
5/16"	ER2007942		ER2007941		ER200794T	
3/8"	ER2009532		ER2009531		ER200953T	
7/16"	ER2011112		ER2011111		ER201111T	
1/2"	ER2012702		ER2012701		ER201270T	

ER20 INCH SIZED COLLETS SETS / ER20 İNÇ ÖLÇÜ PENS TAKIMLARI
ER20 INCH COLLET SET CLASS 2

CODE/KOD	content - içeriği
ER20SETIN2	8pcs ER20 Inch sized collets Class 2 Ø1/16"-1/2" in plastic box 8Ad. ER20 İnç ölçü pens Class 2 Ø1/16"-1/2" arası plastik kutuda

ER20 INCH COLLET SET CLASS 1

CODE/KOD	content - içeriği
ER20SETIN1	8pcs ER20 Inch sized collets Class 1 Ø1/16"-1/2" in plastic box 8Ad. ER20 İnç ölçü pens Class 1 Ø1/16"-1/2" arası plastik kutuda

ER20 INCH COLLET SET TOPAC (5 micron)

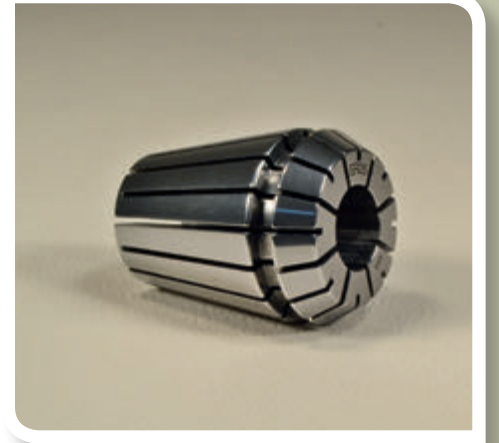
CODE/KOD	content - içeriği
ER20SETINT	8pcs ER20 Inch sized collets TOPAC Ø1/16"-1/2" in plastic box 8Ad. ER20 İnç ölçü pens TOPAC Ø1/16"-1/2" arası plastik kutuda

INCH SIZED ER COLLETS İNÇ ÖLÇÜ ER PENSLER

DIN 6499 / ISO 15488-B

ER25 INCH SIZED COLLETS / ER25 İNÇ ÖLÇÜ PENSLER

ER25	CLASS 2		CLASS 1		TOPAC	
clamping dia sıkma çapı Ømm	CODE / KOD		CODE / KOD		CODE / KOD	
1/16"	ER2501592		ER2501591		ER250159T	
1/8"	ER2503182		ER2503181		ER250318T	
3/16"	ER2504762		ER2504761		ER250476T	
1/4"	ER2506352		ER2506351		ER250635T	
5/16"	ER2507942		ER2507941		ER250794T	
3/8"	ER2509532		ER2509531		ER250953T	
7/16"	ER2511112		ER2511111		ER251111T	
1/2"	ER2512702		ER2512701		ER251270T	
9/16"	ER2514292		ER2514291		ER251429T	
5/8"	ER2515882		ER2515881		ER251588T	



ER25 INCH SIZED COLLETS SETS / ER25 İNÇ ÖLÇÜ PENS TAKIMLARI

ER25 INCH COLLET SET CLASS 2

CODE/KOD	content - içeriği
ER25SETIN2	10pcs ER25 Inch sized collets Class 2 Ø1/16"-5/8" in plastic box 10Ad. ER25 İnc ölçü pens Class 2 Ø1/16"-5/8" arası plastik kutuda

ER25 INCH COLLET SET CLASS 1

CODE/KOD	content - içeriği
ER25SETIN1	10pcs ER25 Inch sized collets Class 1 Ø1/16"-5/8" in plastic box 10Ad. ER25 İnc ölçü pens Class 1 Ø1/16"-5/8" arası plastik kutuda

ER25 INCH COLLET SET TOPAC (5 micron)

CODE/KOD	content - içeriği
ER25SETINT	10pcs ER25 Inch sized collets TOPAC Ø1/16"-5/8" in plastic box 10Ad. ER25 İnc ölçü pens TOPAC Ø1/16"-5/8" arası plastik kutuda



ER32 INCH SIZED COLLETS / ER32 İNÇ ÖLÇÜ PENSLELER

ER32	CLASS 2		CLASS 1		TOPAC	
clamping dia sıkma çapı Ømm	CODE / KOD		CODE / KOD		CODE / KOD	
1/8"	ER3203182		ER3203181		ER320318T	
3/16"	ER3204762		ER3204761		ER320476T	
1/4"	ER3206352		ER3206351		ER320635T	
5/16"	ER3207942		ER3207941		ER320794T	
3/8"	ER3209532		ER3209531		ER320953T	
7/16"	ER3211112		ER3211111		ER321111T	
1/2"	ER3212702		ER3212701		ER321270T	
9/16"	ER3214292		ER3214291		ER321429T	
5/8"	ER3215882		ER3215881		ER321588T	
11/16"	ER3217462		ER3217461		ER321746T	
3/4"	ER3219052		ER3219051		ER321905T	

ER32 INCH SIZED COLLETS SETS / ER32 İNÇ ÖLÇÜ PENS TAKIMLARI

ER32 INCH COLLET SET CLASS 2

CODE/KOD	content - içeriği
ER32SETIN2	11pcs ER32 Inch sized collets Class 2 Ø1/8"-3/4" in plastic box 11Ad. ER32 İnç ölçü pens Class 2 Ø1/8"-3/4" arası plastik kutuda

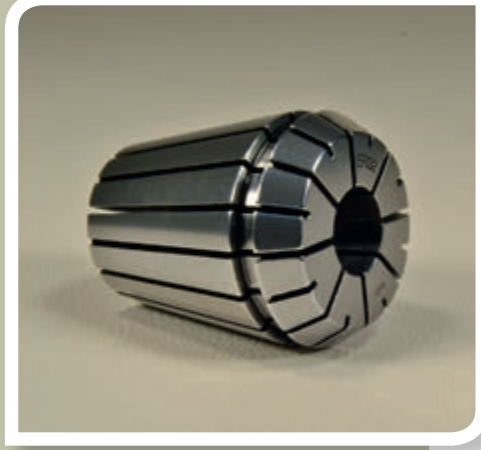
ER32 INCH COLLET SET CLASS 1

CODE/KOD	content - içeriği
ER32SETIN1	11pcs ER32 Inch sized collets Class 1 Ø1/8"-3/4" in plastic box 11Ad. ER32 İnç ölçü pens Class 1 Ø1/8"-3/4" arası plastik kutuda

ER32 INCH COLLET SET TOPAC (5 micron)

CODE/KOD	content - içeriği
ER32SETINT	11pcs ER32 Inch sized collets TOPAC Ø1/8"-3/4" in plastic box 11Ad. ER32 İnç ölçü pens TOPAC Ø1/8"-3/4" arası plastik kutuda

Other inch sized collets are available on request / Diğer inç ölçü pensler siparişe yapılabilir.

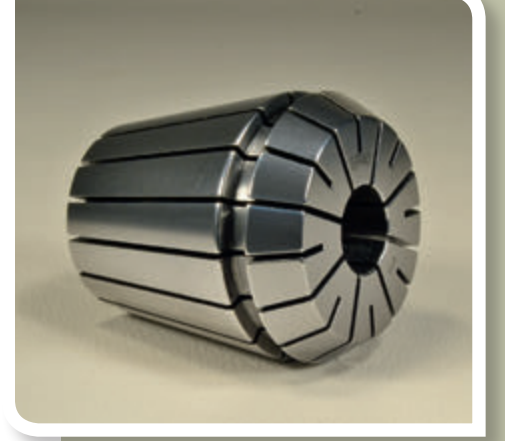


INCH SIZED ER COLLETS İNÇ ÖLÇÜ ER PENSLELER

DIN 6499 / ISO 15488-B

ER40 INCH SIZED COLLETS / ER40 İNÇ ÖLÇÜ PENSLELER

ER40	CLASS 2		CLASS 1		TOPAC	
clamping dia sıkma çapı Ømm	CODE / KOD		CODE / KOD		CODE / KOD	
1/8"	ER4003182		ER4003181		ER400318T	
5/32"***	ER4003972		ER4003971		ER400397T	
3/16"	ER4004762		ER4004761		ER400476T	
7/32"***	ER4005562		ER4005561		ER400556T	
1/4"	ER4006352		ER4006351		ER400635T	
9/32"***	ER4007142		ER4007141		ER400714T	
5/16"	ER4007942		ER4007941		ER400794T	
11/32"***	ER4008732		ER4008731		ER400873T	
3/8"	ER4009532		ER4009531		ER400953T	
13/32"***	ER4010322		ER4010321		ER401032T	
7/16"	ER4011112		ER4011111		ER401111T	
15/32"***	ER4011912		ER4011911		ER401191T	
1/2"	ER4012702		ER4012701		ER401270T	
17/32"***	ER4013492		ER4013491		ER401349T	
9/16"	ER4014292		ER4014291		ER401429T	
19/32"***	ER4015082		ER4015081		ER401508T	
5/8"	ER4015882		ER4015881		ER401588T	
21/32"***	ER4016672		ER4016671		ER401667T	
11/16"	ER4017462		ER4017461		ER401746T	
23/32"***	ER4018262		ER4018261		ER401826T	
3/4"	ER4019052		ER4019051		ER401905T	
13/16"	ER4020642		ER4020641		ER402064T	
7/8"	ER4022232		ER4022231		ER402223T	
15/16"	ER4023812		ER4023811		ER402381T	
1"	ER4025402		ER4025401		ER402540T	



ER40 INCH SIZED COLLETS SETS / ER40 İNÇ ÖLÇÜ PENS TAKIMLARI

ER40 INCH COLLET SET CLASS 2

CODE/KOD	content - içeriği
ER40SETIN2	15pcs ER40 Inch sized collets Class 2 Ø1/8"-1" in plastic box 15Ad. ER40 İnce ölçü pens Class 2 Ø1/8"-1" arası plastik kutuda

ER40 INCH COLLET SET CLASS 1

CODE/KOD	content - içeriği
ER40SETIN1	15pcs ER40 Inch sized collets Class 1 Ø1/8"-1" in plastic box 15Ad. ER40 İnce ölçü pens Class 1 Ø1/8"-1" arası plastik kutuda

ER40 INCH COLLET SET TOPAC (5 micron)

CODE/KOD	content - içeriği
ER40SETINT	15pcs ER40 Inch sized collets TOPAC Ø1/8"-1" in plastic box 15Ad. ER40 İnce ölçü pens TOPAC Ø1/8"-1" arası plastik kutuda



** indicated size collets are not included in the sets / İşaretili ölçü pensler setin içinde yoktur.
Other inch sized collets are available on request / Diğer ince ölçü pensler siparişe yapılabilir.

INCH SIZED COOLANT SEALED ER COLLETS for internal coolant tools
İNÇ ÖLÇÜ SIZDIRMAZ PESLER İçten soğutmalı takımlar için

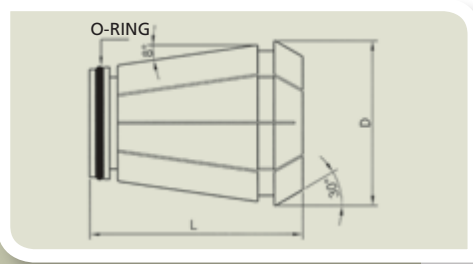
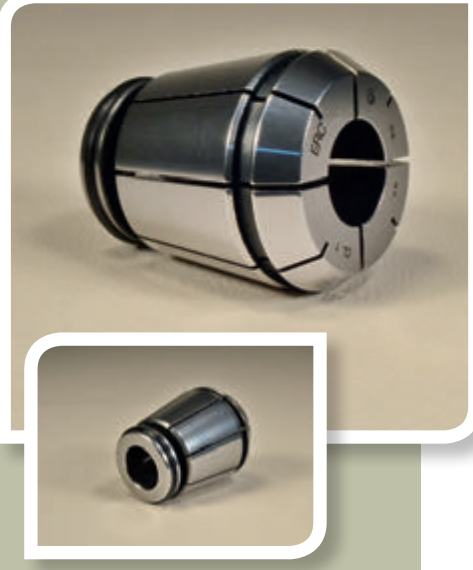
DIN 6499 / ISO 15488

Pat. Nr. 2012 07739

ERC16	CLASS 2		CLASS 1		TOPAC	
clamping dia sıkma çapı Ømm	CODE / KOD		CODE / KOD		CODE / KOD	
1/8"	ERC1603182		ERC1603181		ERC160318T	
1/4"	ERC1606352		ERC1606351		ERC160635T	
5/16"	ERC1607942		ERC1607941		ERC160794T	
3/8"	ERC1609532		ERC1609531		ERC160953T	

ERC20	CLASS 2		CLASS 1		TOPAC	
clamping dia sıkma çapı Ømm	CODE / KOD		CODE / KOD		CODE / KOD	
1/8"	ERC2003182		ERC2003181		ERC200318T	
1/4"	ERC2006352		ERC2006351		ERC200635T	
5/16"	ERC2007942		ERC2007941		ERC200794T	
3/8"	ERC2009532		ERC2009531		ERC200953T	
7/16"	ERC2011112		ERC2011111		ERC201111T	
1/2"	ERC2012702		ERC2012701		ERC201270T	

ERC25	CLASS 2		CLASS 1		TOPAC	
clamping dia sıkma çapı Ømm	CODE / KOD		CODE / KOD		CODE / KOD	
1/8"	ERC2503182		ERC2503181		ERC250318T	
1/4"	ERC2506352		ERC2506351		ERC250635T	
5/16"	ERC2507942		ERC2507941		ERC250794T	
3/8"	ERC2509532		ERC2509531		ERC250953T	
7/16"	ERC2511112		ERC2511111		ERC251111T	
1/2"	ERC2512702		ERC2512701		ERC251270T	
9/16"	ERC2514292		ERC2514291		ERC251429T	
5/8"	ERC2515882		ERC2515881		ERC251588T	



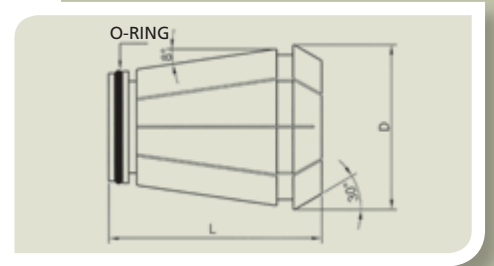
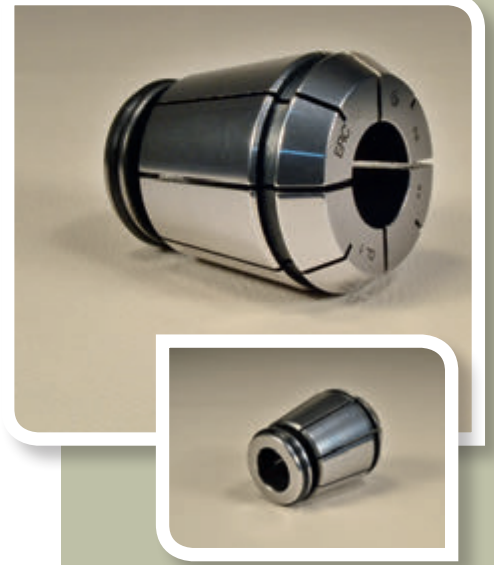
INCH SIZED COOLANT SEALED ER COLLETS for internal coolant tools
İNÇ ÖLÇÜ SIZDIRMAZ PESLER İçten soğutmalı takımlar için

DIN 6499 / ISO 15488

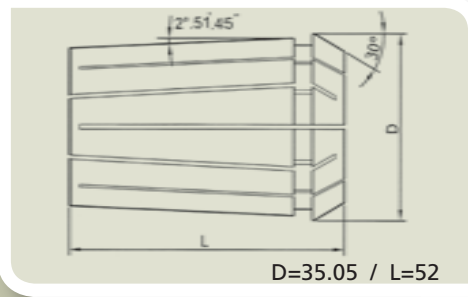
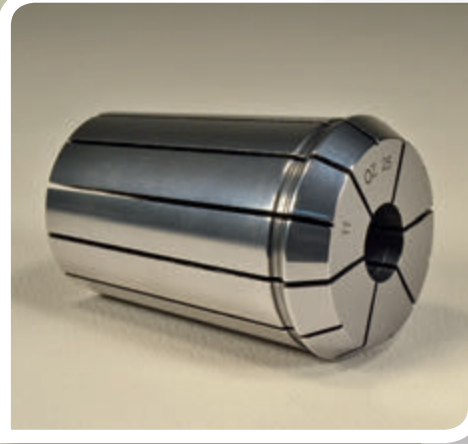
Pat. Nr. 2012 07739

ERC32	CLASS 2		CLASS 1		TOPAC	
clamping dia sıkma çapı Ømm	CODE / KOD		CODE / KOD		CODE / KOD	
1/8"	ERC3203182		ERC3203181		ERC320318T	
1/4"	ERC3206352		ERC3206351		ERC320635T	
5/16"	ERC3207942		ERC3207941		ERC320794T	
3/8"	ERC3209532		ERC3209531		ERC320953T	
7/16"	ERC3211112		ERC3211111		ERC321111T	
1/2"	ERC3212702		ERC3212701		ERC321270T	
9/16"	ERC3214292		ERC3214291		ERC321429T	
5/8"	ERC3215882		ERC3215881		ERC321588T	
3/4"	ERC3219052		ERC3219051		ERC321905T	

ERC40	CLASS 2		CLASS 1		TOPAC	
clamping dia sıkma çapı Ømm	CODE / KOD		CODE / KOD		CODE / KOD	
1/4"	ERC4006352		ERC4006351		ERC400635T	
5/16"	ERC4007942		ERC4007941		ERC400794T	
3/8"	ERC4009532		ERC4009531		ERC400953T	
7/16"	ERC4011112		ERC4011111		ERC401111T	
1/2"	ERC4012702		ERC4012701		ERC401270T	
9/16"	ERC4014292		ERC4014291		ERC401429T	
5/8"	ERC4015882		ERC4015881		ERC401588T	
3/4"	ERC4019052		ERC4019051		ERC401905T	
1"	ERC4025402		ERC4025401		ERC402540T	



DIN 6388 / ISO 10897-B COLLETS



D	52.0mm
L	60.0mm
α	2° 51' 45"
β	30°
CLAMPING RANGE TUTMA ARALIĞI	2.0-25.4
CLAMPING STEPS TUTMA KAPASİTESİ	0.5mm



OZ25	DIN 6388 / ISO10897-B (OZ25) CLASS 2	DIN 6388 / ISO10897-B (OZ25) CLASS 1	DIN 6388 / ISO10897-B (OZ25) TOPAC (5 micron)
clamping dia sıkma çapı	CODE / KOD	CODE / KOD	CODE / KOD
2.0-1.5	OZ250202	OZ250201	OZ25020T
2.5-2.0	OZ250252	OZ250251	OZ25025T
3.0-2.5	OZ250302	OZ250301	OZ25030T
3.5-3.0	OZ250352	OZ250351	OZ25035T
4.0-3.5	OZ250402	OZ250401	OZ25040T
4.5-4.0	OZ250452	OZ250451	OZ25045T
5.0-4.5	OZ250502	OZ250501	OZ25050T
5.5-5.0	OZ250552	OZ250551	OZ25055T
6.0-5.5	OZ250602	OZ250601	OZ25060T
1/4" (6.35)	OZ250632	OZ250631	OZ25063T
6.5-6.0	OZ250652	OZ250651	OZ25065T
7.0-6.5	OZ250702	OZ250701	OZ25070T
7.5-7.0	OZ250752	OZ250751	OZ25075T
8.0-7.5	OZ250802	OZ250801	OZ25080T
8.5-8.0	OZ250852	OZ250851	OZ25085T
9.0-8.5	OZ250902	OZ250901	OZ25090T
9.5-9.0	OZ250952	OZ250951	OZ25095T
3/8" (9.53)	OZ250962	OZ250961	OZ25096T
10.0-9.5	OZ251002	OZ251001	OZ25100T
10.5-10.0	OZ251052	OZ251051	OZ25105T
11.0-10.5	OZ251102	OZ251101	OZ25110T
11.5-11.0	OZ251152	OZ251151	OZ25115T
12.0-11.5	OZ251202	OZ251201	OZ25120T
12.5-12.0	OZ251252	OZ251251	OZ25125T
1/2" (12.70)	OZ251272	OZ251271	OZ25127T
13.0-12.5	OZ251302	OZ251301	OZ25130T
13.5-13.0	OZ251352	OZ251351	OZ25135T
14.0-13.5	OZ251402	OZ251401	OZ25140T
14.5-14.0	OZ251452	OZ251451	OZ25145T
15.0-14.5	OZ251502	OZ251501	OZ25150T
15.5-15.0	OZ251552	OZ251551	OZ25155T
5/8" (15.87)	OZ251582	OZ251581	OZ25158T
16.0-15.5	OZ251602	OZ251601	OZ25160T
16.5-16.0	OZ251652	OZ251651	OZ25165T
17.0-16.5	OZ251702	OZ251701	OZ25170T
17.5-17.0	OZ251752	OZ251751	OZ25175T
18.0-17.5	OZ251802	OZ251801	OZ25180T
18.5-18.0	OZ251852	OZ251851	OZ25185T
19.0-18.5	OZ251902	OZ251901	OZ25190T
3/4" (19.05)	OZ251912	OZ251911	OZ25191T
19.5-19.0	OZ251952	OZ251951	OZ25195T
20.0-19.5	OZ252002	OZ252001	OZ25200T
20.5-20.0	OZ252052	OZ252051	OZ25205T
21.0-20.5	OZ252102	OZ252101	OZ25210T
21.5-21.0	OZ252152	OZ252151	OZ25215T
22.0-21.5	OZ252202	OZ252201	OZ25220T
22.5-22.0	OZ252252	OZ252251	OZ25225T
23.0-22.5	OZ252302	OZ252301	OZ25230T
23.5-23.0	OZ252352	OZ252351	OZ25235T
24.0-23.5	OZ252402	OZ252401	OZ25240T
24.5-24.0	OZ252452	OZ252451	OZ25245T
25.0-24.5	OZ252502	OZ252501	OZ25250T
1" (25.40)	OZ252542	OZ252541	OZ25254T

DIN6388B-25 COLLET SETS / DIN6388B-25 PENS TAKIMLARI

OZ25 COLLET SET CLASS 2

CODE/KOD	content - içeriği
OZ25SET2	24pcs DIN6388B-25 collets Class2 Ø2-25mm in 1mm increments in plastic box 24 Ad. DIN6388-25 Pens Class2 Ø2-25mm 1mm atlamalı plastik kutuda

OZ25 COLLET SET CLASS 1

CODE/KOD	content - içeriği
OZ25SET1	24pcs DIN6388B-25 collets Class1 Ø2-25mm in 1mm increments in plastic box 24 Ad. DIN6388-25 Pens Class1 Ø2-25mm 1mm atlamalı plastik kutuda

OZ25 COLLET SET TOPAC (5 micron)

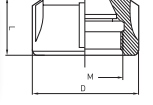
CODE/KOD	content - içeriği
OZ25SETT	24pcs DIN6388B-25 collets TOPAC Ø2-25mm in 1mm increments in plastic box 24 Ad. DIN6388-25 Pens TOPAC Ø2-25mm 1mm atlamalı plastik kutuda



TOOLHOLDER ACCESSORIES
TUTUCU AKSESUARLARI

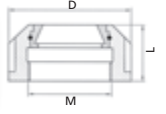
LOCKNUTS PENS SOMUNLARI

ER STANDARD LOCKNUT / ER STANDART SOMUN DIN 6499 / ISO 15488



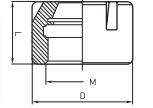
CODE KOD	ER SIZE ER ÖLÇÜSÜ	D	L	M
NER16S	ER 16	32	17.5	M 22 x 1.5
NER20S	ER 20	35	19	M 25 x 1.5
NER25S	ER 25	42	20	M 32 x 1.5
NER32S	ER 32	50	22.5	M 40 x 1.5
NER40S	ER 40	63	25.5	M 50 x 1.5
NER50S	ER 50	78	35	M 64 x 2

ER BEARING TYPE LOCKNUT / ER BİLYALI TİP SOMUN DIN 6499 / ISO 15488



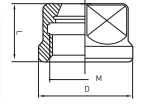
CODE KOD	ER SIZE ER ÖLÇÜSÜ	D	L	M
NER25B	ER 25	42	23	M 32 x 1.5
NER32B	ER 32	50	25	M 40 x 1.5
NER40B	ER 40	63	28.5	M 50 x 1.5

ER MINI LOCKNUT / ER MİNİ SOMUN DIN 6499 / ISO 15488



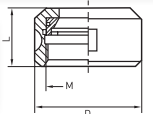
CODE KOD	ER SIZE ER ÖLÇÜSÜ	D	L	M
NER08M	ER 8 MINI	12	11	M 10 x 0.75
NER11M	ER 11 MINI	16	12	M 13 x 0.75
NER16M	ER 16 MINI	22	19	M 19 x 1
NER20M	ER 20 MINI	28	19	M 24 x 1
NER25M	ER 25 MINI	35	20	M 30 x 1

ER HEXAGON LOCKNUT / ER ALTİKÖŞE SOMUN DIN 6499 / ISO 15488



CODE KOD	ER SIZE ER ÖLÇÜSÜ	D	L	M
NER11H	ER 11	19	11.3	M 14 x 0.75
NER16H	ER 16	28	17	M 22 x 1.5
NER20H	ER 20	34	19	M 25 x 1.5

OZ TYPE LOCKNUT / OZ TİP SOMUN DIN 6388 / ISO 10897-D



CODE KOD	D	L	M
NOZ25B	60	33	M 48 x 2

SPANNERS ANAHTARLAR

ER STANDARD SPANNER / ER STANDART ANAHTAR

CODE / KOD	ER SIZE / ER ÖLÇÜSÜ	
SPER16S	ER 16	
SPER20S	ER 20	
SPER25S	ER 25	
SPER32S	ER 32	
SPER40S	ER 40	
SPER50S	ER 50	



ER MOON TYPE SPANNER / ER AY TİPİ ANAHTAR

CODE / KOD	ER SIZE / ER ÖLÇÜSÜ	
SPER25C	ER 25	
SPER32C	ER 32	
SPER40C	ER 40	



ER MINI SPANNER / ER MINI ANAHTAR

CODE / KOD	ER SIZE / ER ÖLÇÜSÜ	
SPER08M	ER 8 MINI	
SPER11M	ER 11 MINI	
SPER16M	ER 16 MINI	
SPER20M	ER 20 MINI	
SPER25M	ER 25 MINI	



ER HEXAGON SPANNER / ER ALTIKÖŞE ANAHTAR

CODE / KOD	ER SIZE / ER ÖLÇÜSÜ	
SPER11H	ER 11	
SPER16H	ER 16	
SPER20H	ER 20	



OZ SPANNER DIN 6388 / ISO 10897 - OZ AY ANAHTAR DIN 6388 / ISO 10897

CODE / KOD	LOCKNUT TYPE SOMUN TİPİ	
SPOZ25	DIN6388B-25 (OZ25)	



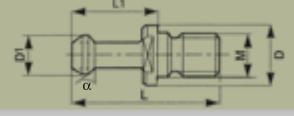
FACE MILL SPANNER / ALIN FREZE TUTUCU ANAHTARI

CODE / KOD	TYPE / TİP	
SPFM16	FM16	
SPFM22	FM22	
SPFM27	FM27	
SPFM32	FM32	
SPFM40	FM40	



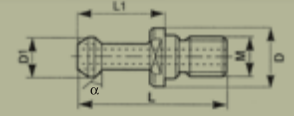
PULL STUDS ÇEKTİRME CİVATALARI

MAS 403 BT



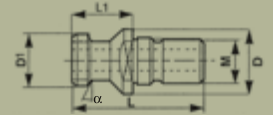
CODE KOD	Toolholder Taper Tutucu Konik	M	D	D1	L	L1	α
PSBT3045	BT30	M12	16.5	11	43	23	45°
PSBT4045	BT40	M16	23	15	60	35	45°
PSBT4060	BT40	M16	23	15	60	35	60°
PSBT4090	BT40	M16	23	15	60	35	90°
PSBT5045	BT50	M24	38	23	85	45	45°

MAS 403 BT - internal coolant İçten soğutma delikli



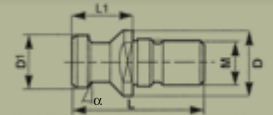
CODE KOD	Toolholder Taper Tutucu Konik	M	D	D1	L	L1	α
PSBT4045B	BT40	M16	23	15	60	35	45°
PSBT5045B	BT50	M24	38	23	85	45	45°

DIN 69872A - internal coolant İçten soğutma delikli



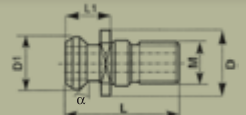
CODE KOD	Toolholder Taper Tutucu Konik	M	D	D1	L	L1	α
PS698724A	DIN40 (69871)	M16	23	19	54	26	15°
PS698725A	DIN50 (69871)	M24	36	28	74	34	15°

DIN 69872B



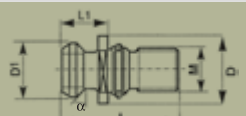
CODE KOD	Toolholder Taper Tutucu Konik	M	D	D1	L	L1	α
PS698724B	DIN40 (69871)	M16	23	19	54	26	15°
PS698725B	DIN50 (69871)	M24	36	28	74	34	15°

ISO 7388/2 (1984/B) - internal coolant İçten soğutma delikli



CODE KOD	Toolholder Taper Tutucu Konik	M	D	D1	L	L1	α
PS738840A	DIN40 (69871)	M16	22.5	18.9	44.5	16.3	45°
PS738850A	DIN50 (69871)	M24	36	29.1	65.5	25.6	45°

ISO 7388/2 (1984/B)

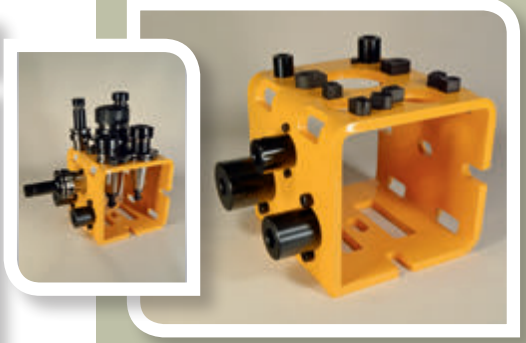


CODE KOD	Toolholder Taper Tutucu Konik	M	D	D1	L	L1	α
PS738840B	DIN40 (69871)	M16	22.5	18.9	44.5	16.3	45°
PS738850B	DIN50 (69871)	M24	36	29.1	65.5	25.6	45°

TOOL CLAMPING UNITS TAKIM BAĞLAMA ÜNİTELERİ

UNIVERSAL TOOL CLAMPING SET / ÜNİVERSAL TAKIM BAĞLAMA SETİ Pat.

CODE / KOD	Description / Tanımı
TBAUNI	<p>All in one, Universal design massive steel construction, usable both vertical and horizontal position, suitable tapers: BT-DIN-ISO-SK-CAT 30-40-50 HSK A 40-50-63-80-100</p> <p>Hepsi bir arada, üniversal tasarım, masif çelik yapı, dikey ve yatay kullanım ve bağlama imkanı takılan konikler BT-DIN-ISO-SK-CAT 30-40-50 HSK A 40-50-63-80-100</p> <p>Dimensions/Boyutlar: 174x191x169mm</p>



TOOL CLAMPING UNIT 30-40-50 TAPER / TAKIM BAĞLAMA APARATI 30-40-50 KONİK

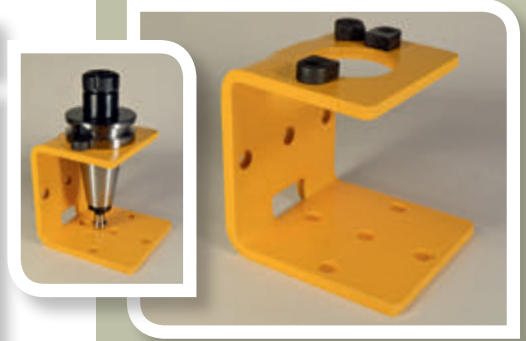
CODE / KOD	Description / Tanımı
TBA304050	<p>Massive steel construction, usable both vertical and horizontal position, suitable for tapers BT-DIN-ISO-SK-CAT 30-40-50</p> <p>Masif çelik yapı, dikey ve yatay konumda bağlama imkanı, Bağladığı konikler: BT-DIN-ISO-SK-CAT 30-40-50</p> <p>Dimensions/Boyutlar: 165x190x165mm</p>



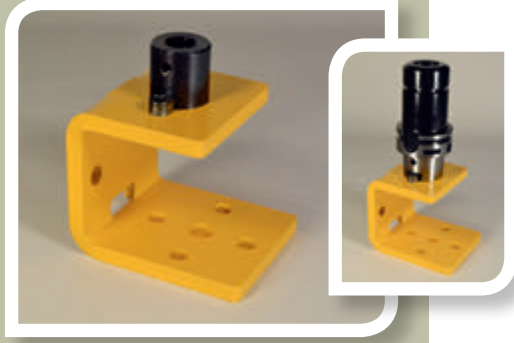
TOOL CLAMPING UNIT WITH SINGLE TAPER / TAKIM BAĞLAMA APARATI TEK KONİKLİ

CODE / KOD	Description / Tanımı
TBA30	<p>Tool clamping unit 30 Taper Takım bağlama aparatı 30 konik BT-DIN-ISO-SK-CAT 30 Dimensions/Boyutlar: 75x95x75mm</p>
TBA40	<p>Tool clamping unit 40 Taper Takım bağlama aparatı 40 konik BT-DIN-ISO-SK-CAT 40 Dimensions/Boyutlar: 90x110x105mm</p>
TBA50	<p>Tool clamping unit 50 Taper Takım bağlama aparatı 50 konik BT-DIN-ISO-SK-CAT 50 Dimensions/Boyutlar: 110x148x150mm</p>

Massive steel construction, usable both vertical and horizontal position, Masif çelik yapı, dikey ve yatay bağlama imkanı



TOOL CLAMPING UNITS TAKIM BAĞLAMA ÜNİTELERİ



TOOL CLAMPING UNIT FOR HSK-A TAPERS / TAKIM BAĞLAMA APARATI HSK-A KONİKLER İÇİN

CODE / KOD	Description / Tanımı
TBAHSK40	Tool clamping unit HSK-A 40 Taper Takım bağlama aparatı HSK-A 40 konik Dimensions/Boyutlar: 60x80x60mm
TBAHSK50	Tool clamping unit HSK-A 50 Taper Takım bağlama aparatı HSK-A 50 konik Dimensions/Boyutlar: 75x90x65mm
TBAHSK63	Tool clamping unit HSK-A 63 Taper Takım bağlama aparatı HSK-A 63 konik Dimensions/Boyutlar: 85x100x70mm
TBAHSK80	Tool clamping unit HSK-A 80 Taper Takım bağlama aparatı HSK-A 80 konik Dimensions/Boyutlar: 100x120x70mm
TBAHSK100	Tool clamping unit HSK-A 100 Taper Takım bağlama aparatı HSK-A 100 konik Dimensions/Boyutlar: 120x130x70mm

Massive steel construction, usable both vertical and horizontal position,
Masif çelik yapı, dikey ve yatay bağlama imkanı



MULTI PURPOSE MITER FIXTURE / ÇOK AMAÇLI GÖNYE APARATI

CODE / KOD	Description / Tanımı
MITFIX	Massive steel construction, usable both vertical and horizontal position, fixing and workpiece or fixture, suitable for our tool clamping set / unit Dimensions: WidthxLengthxHeight 100x190x140mm Masif çelik yapı, dikey ve yatay konumda kullanım ve her tür iş parçası ve aparat bağlamaya uygun, ayrıca takım bağlama aparat ve setlerimize de uygundur Boyutlar: EnxBoyxYükseklik 100x190x140mm



TOOLHOLDER STORAGE STAND / TAKIM TUTUCU STANDI

CODE / KOD	Description / Tanımı
TSUNI16	Toolholder storage stand 16 holes Universal design suits all tapers BT-DIN-ISO-SK-CAT 30-40-50 HSK A 32-40-50-63-80 Dimensions: WidthxLengthxHeight 57x50x30mm Takım tutucu standı 16 hazneli Universal tasarım tüm koniklere uygun BT-DIN-ISO-SK-CAT 30-40-50 HSK A 32-40-50-63-80 Boyutlar: EnxBoyxYükseklik 57x50x30mm

WOODEN COLLET STANDS AĖŞAP PENS STANTLARI

WOODEN COLLET STAND / AĖŞAP PENS STANDI

CODE / KOD	Collet to fit / Uygun pens tipi	
WCS08	ER 8	
WCS11	ER 11	
WCS16	ER 16	
WCS20	ER 20	
WCS25	ER 25	
WCS32	ER 32	
WCS40	ER 40	
WCS50	ER 50	
WCSOZ	OZ25 DIN6388-25	



SPARE TOOLHOLDER SCREWS YEDEK TAKIM TUTUCU CİVATALARI

FACE MILL ADAPTOR LOCK SCREW / ALIN FREZE TUTUCU SABİTLEME CİVATASI

CODE / KOD	TOOLHOLDER REF. / TUTUCU REF.	SIZE / ÖLÇÜ	
SCFM16	FACE MILL Ø16MM	M8	
SCFM22	FACE MILL Ø22MM	M10	
SCFM27	FACE MILL Ø27MM	M12	
SCFM32	FACE MILL Ø32MM	M16	
SCFM40	FACE MILL Ø40MM	M20	

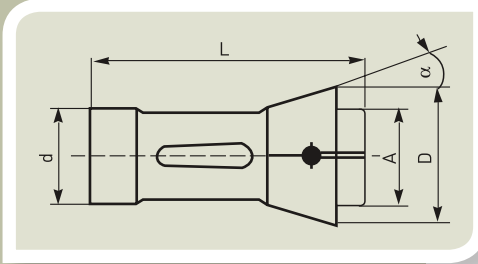





WELDON ADAPTOR SIDE LOCK SCREW / WELDON TUTUCU SABİTLEME CİVATASI

CODE / KOD	TOOLHOLDER REF. / TUTUCU REF.	SIZE / ÖLÇÜ	
SCW06	WELDON Ø6MM	M6X10	
SCW08	WELDON Ø8MM	M8X10	
SCW10	WELDON Ø10MM	M10X12	
SCW12	WELDON Ø12MM	M12X16	
SCW14	WELDON Ø14MM	M12X16	
SCW16	WELDON Ø16MM	M14X16	
SCW18	WELDON Ø18MM	M14X16	
SCW20	WELDON Ø20MM	M16X16	
SCW25	WELDON Ø25MM	M18X2X20	
SCW32	WELDON Ø32MM	M20X2X20	
SCW40	WELDON Ø40MM	M20X2X20	



DIN 6343 WORKHOLDING COLLETS DIN 6343 CNC TORNA, OTOMAT, REVOLVER PENSLERİ



CODE KOD	TYPE TİP	d	L	D	A	α	ROUND YUVARLAK	HEXAGON ALTİKÖŞE	SQUARE KARE
									
FC140E....	A16 140E F22 TRAUB A15 INDEX 12	22	55	30	21	15°	(Ø3-16mm)	(Ø5-13mm)	(Ø5-10mm)
FC148E....	A20 148E F28 TRAUB A20 INDEX 18	28	70	38	28	15°	(Ø3-22mm)	(Ø5-19mm)	(Ø5-15mm)
FC161E....	A25 161E F32 TRAUB A25 INDEX 20	32	75	45	34	15°	(Ø3-26mm)	(Ø5-22mm)	(Ø5-18mm)
FC162E....	A25-1 162E F35 INDEX 25	35	70	43	34	15°	(Ø3-25mm)	(Ø5-22mm)	(Ø5-18mm)
FC163E....	A30 163E F35 TRAUB A30 INDEX 24	35	80	48	38	15°	(Ø3-30mm)	(Ø5-26mm)	(Ø5-20mm)
FC171E....	A36 171E F42 TRAUB A36 INDEX 30	42	94	55	42	15°	(Ø3-36mm)	(Ø5-30mm)	(Ø5-25mm)
FC173E....	A42 173E F48 TRAUB A42 INDEX 36	48	94	60	50	15°	(Ø3-42mm)	(Ø5-36mm)	(Ø5-29mm)
FC185E....	A60 185E F66 TRAUB A60 INDEX 52	66	110	84	73	15°	(Ø4-60mm)	(Ø10-52mm)	(Ø7-42mm)

Ordering examples : FC173E100R - 173E collet 10mm Round
Suffix of the code R= Round H=Hexagon S=Square
Special sizes made to order

Sipariş kodu örnek : FC173E100R - 173E pens 10mm Yuvarlak
Kod sonundaki R=Yuvarlak H=Altıköşe S=Kare
Özel ölçüler siparişe üretilir.



gürkan makina ticaret ve sanayi ltd.şti.